

Trapped Between Two Systems: The Child Only Caseload in NC

By
D. F. Duncan
Jordan Institute for Families
UNC-CH School of Social Work
August 30, 2005

The Story Behind this Analysis

- The UNC-CH School of Social Work has been working closely with NC-DSS to examine and explore the impact of welfare reform
- As part of that effort, a longitudinal database has been created and maintained that tracks the experiences of all families and individuals receiving assistance at any time since January 1995



The Story Behind this Analysis

- Currently information is tracked on more than 485,000 cases that have received assistance and about 1,068,000 individuals
- Information is tracked on more than 1,226,000 food stamp households containing more than 2,268,000 individuals



The Story Behind this Analysis

- Information is extracted from state administrative systems monthly
- Additional information on earnings is obtained quarterly from the state employment service



The Story Behind this Analysis

- These data are used to provide analytic support to NC-DSS on the impact of reforms on the Work First (TANF) caseload
- Information on the experiences of these families is provided to counties (and the public) through a web site

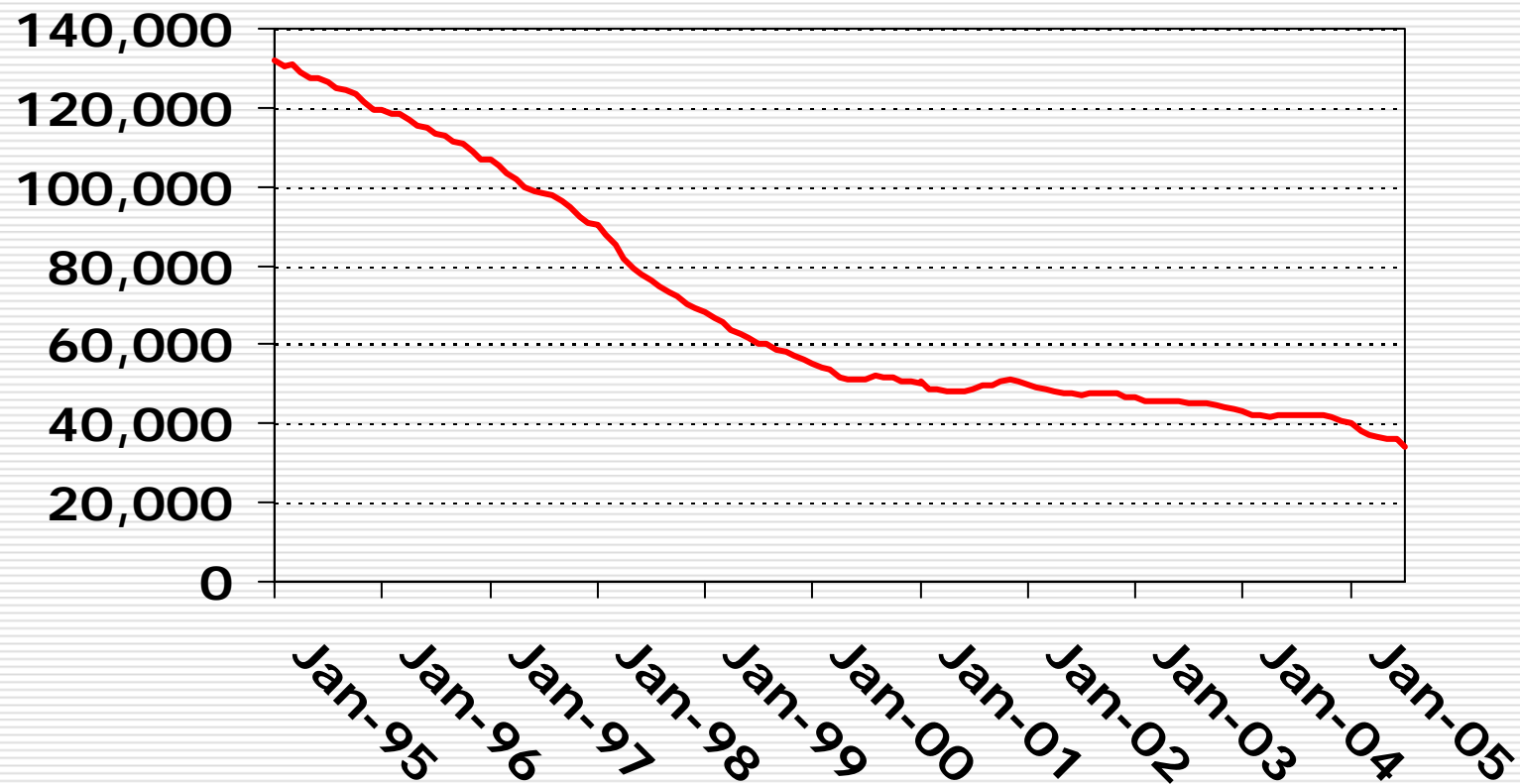


The Story Behind this Analysis

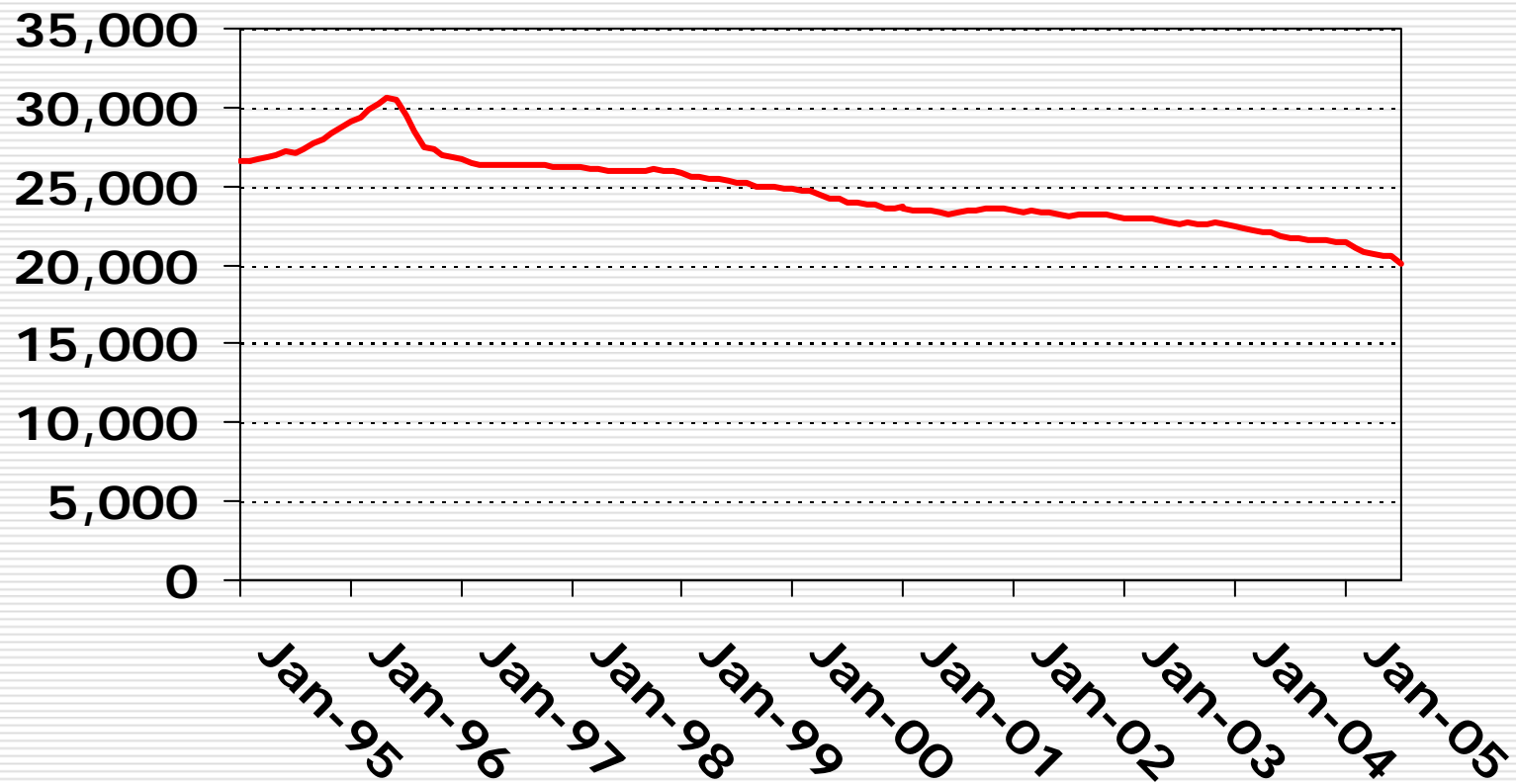
- These datasets permit longitudinal as well as cross-sectional analysis of the caseload
- In longitudinal analysis, cases are assigned to a cohort based on when they first enter the Work First program



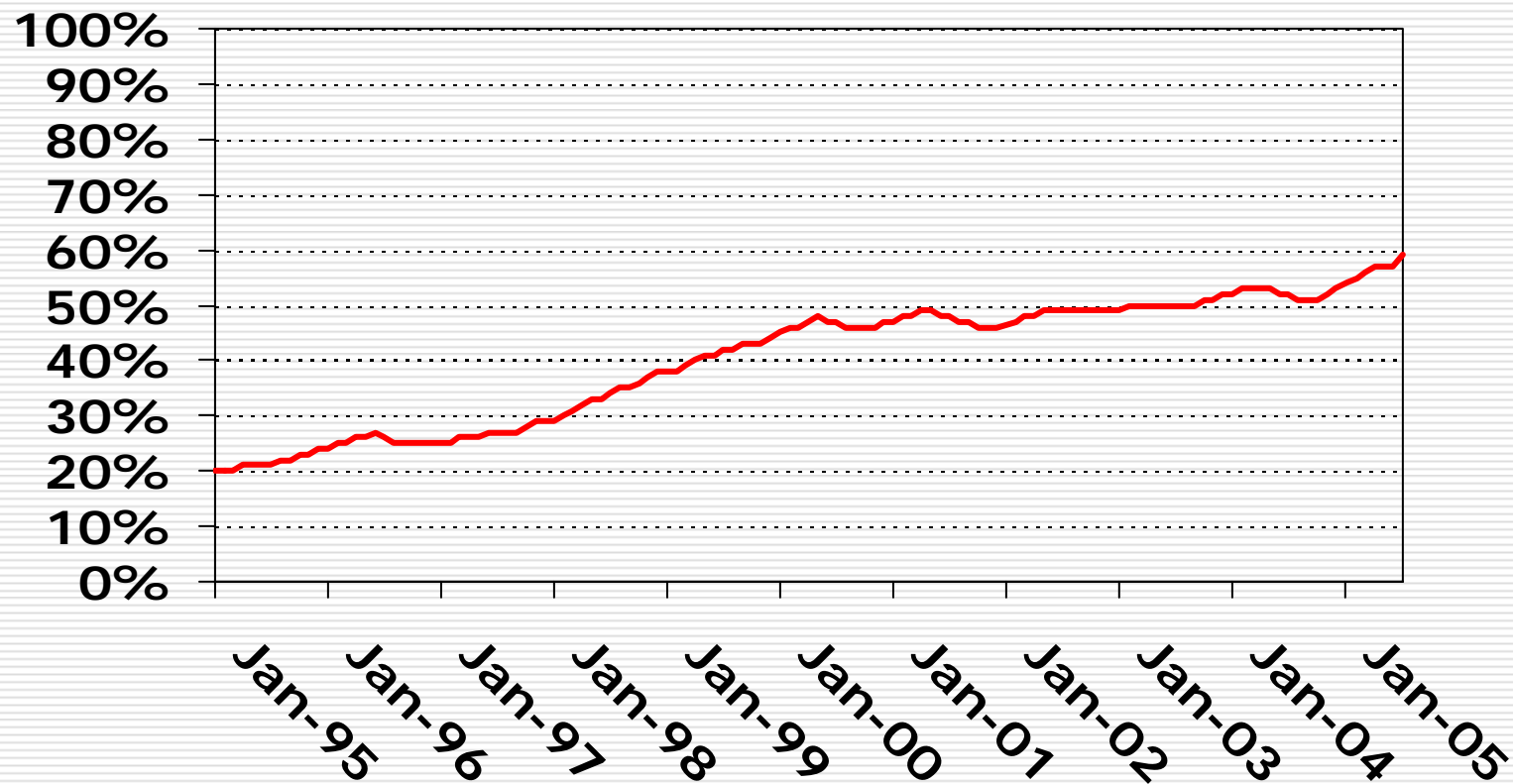
The Work First Caseload



The Work First Child Only Caseload



Percentage of Work First Caseload That is Classified as Child Only

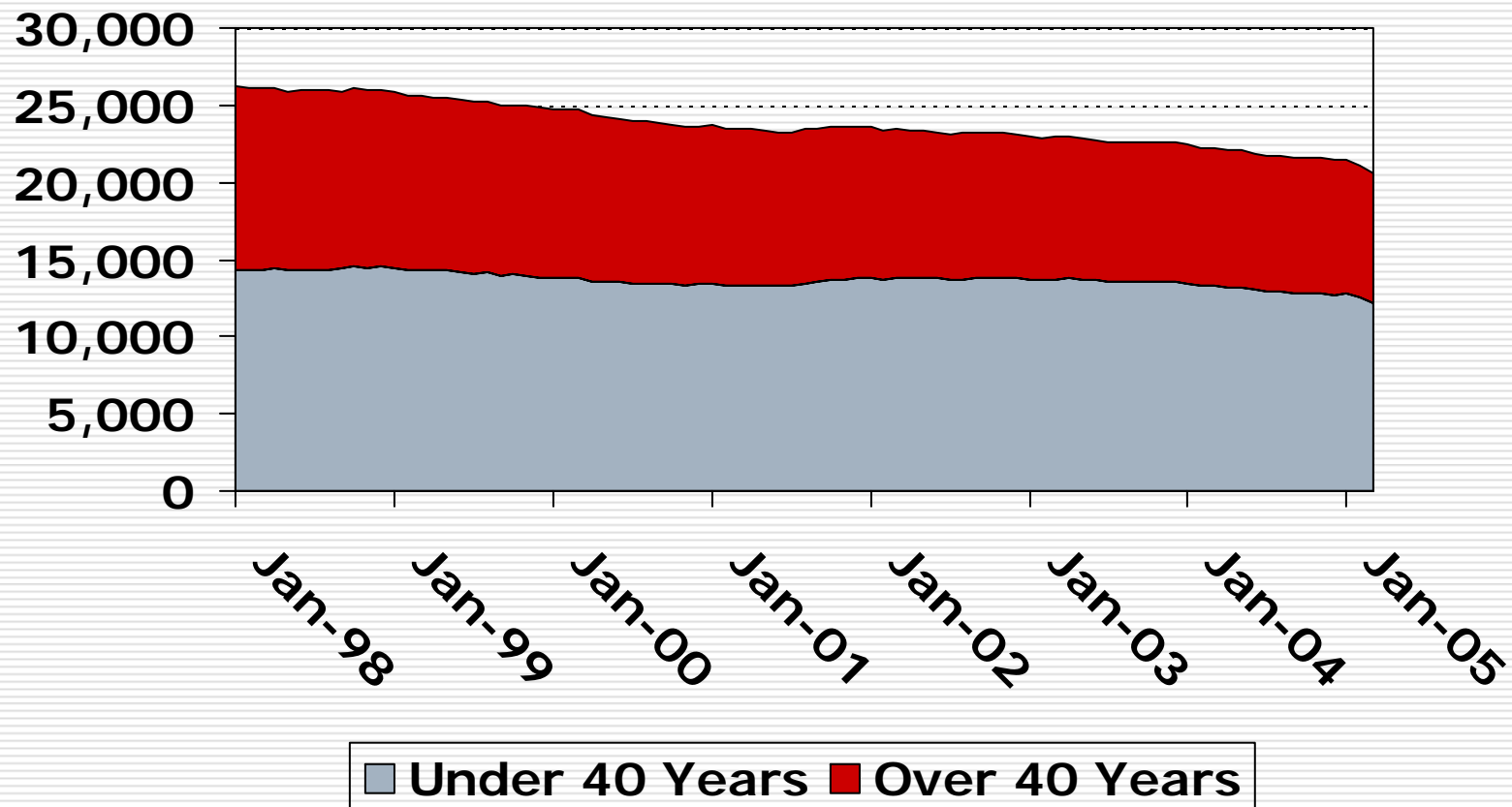


How Cases Can Be Child Only

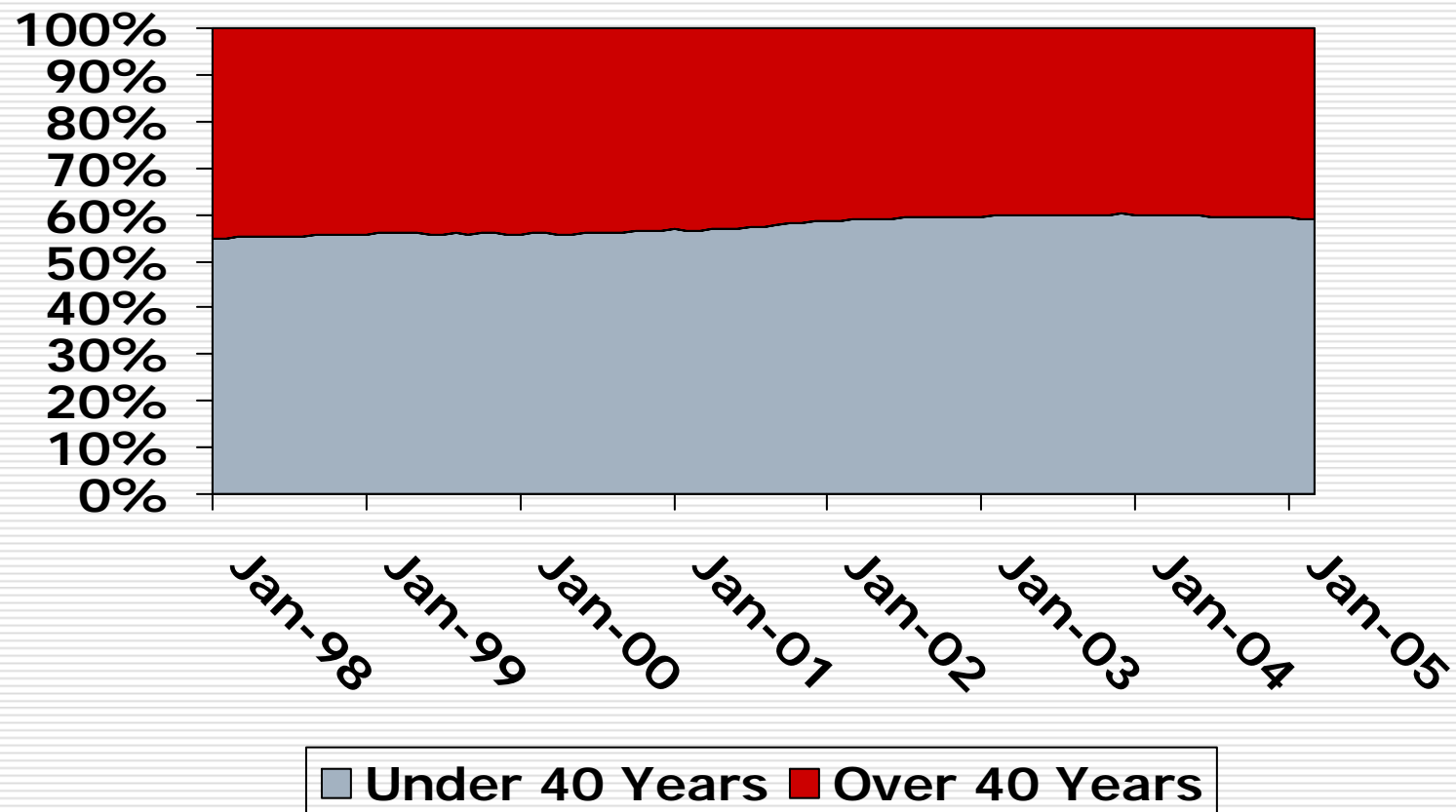
- SSI Receipt by one or both parents
- Parent(s) are sanctioned for IV-D and removed from case
- Parent does not meet citizenship requirement
- Parents are absent and child is living with caretaker relative



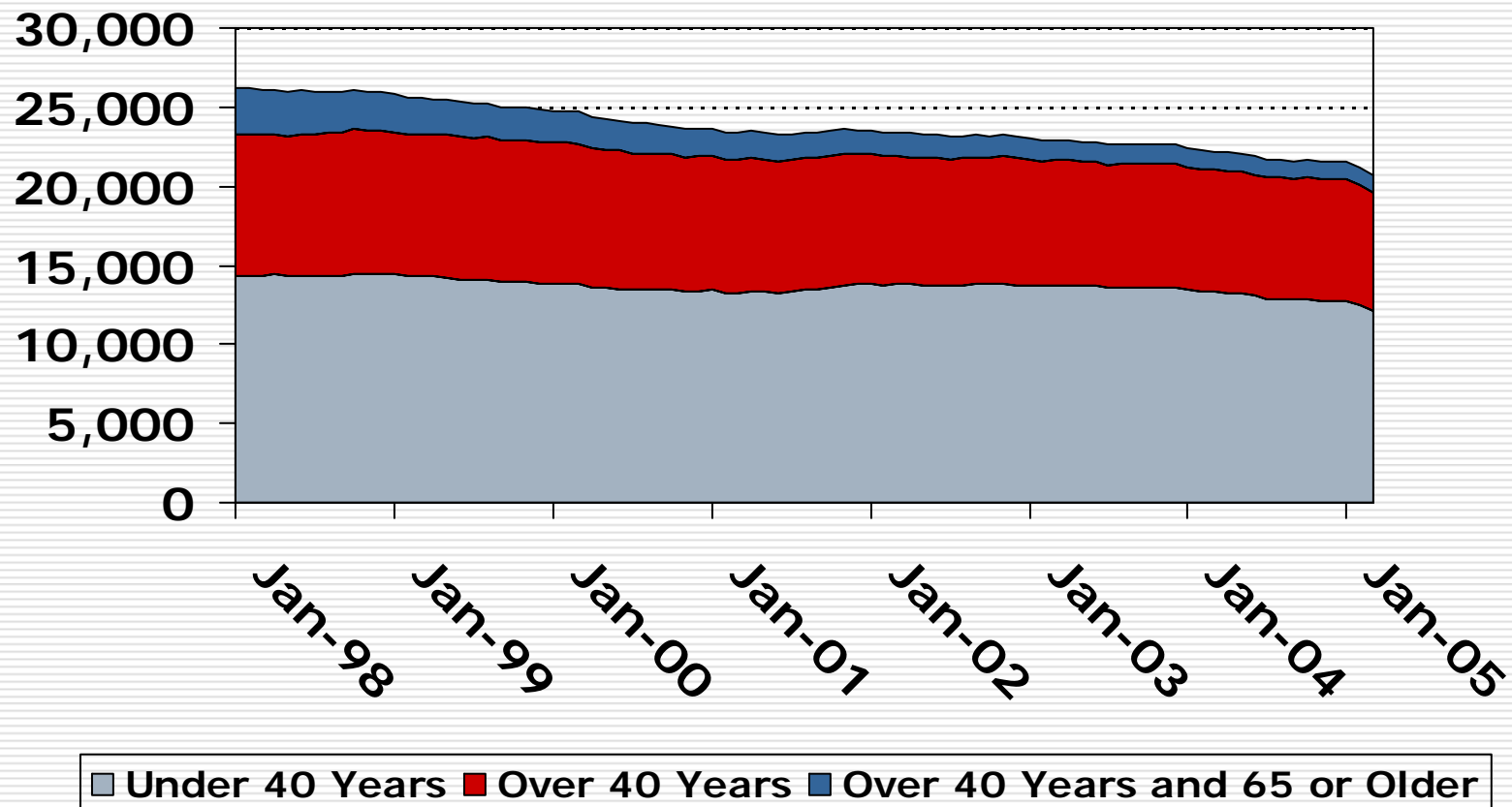
Difference in Age Between Payee and Youngest Child



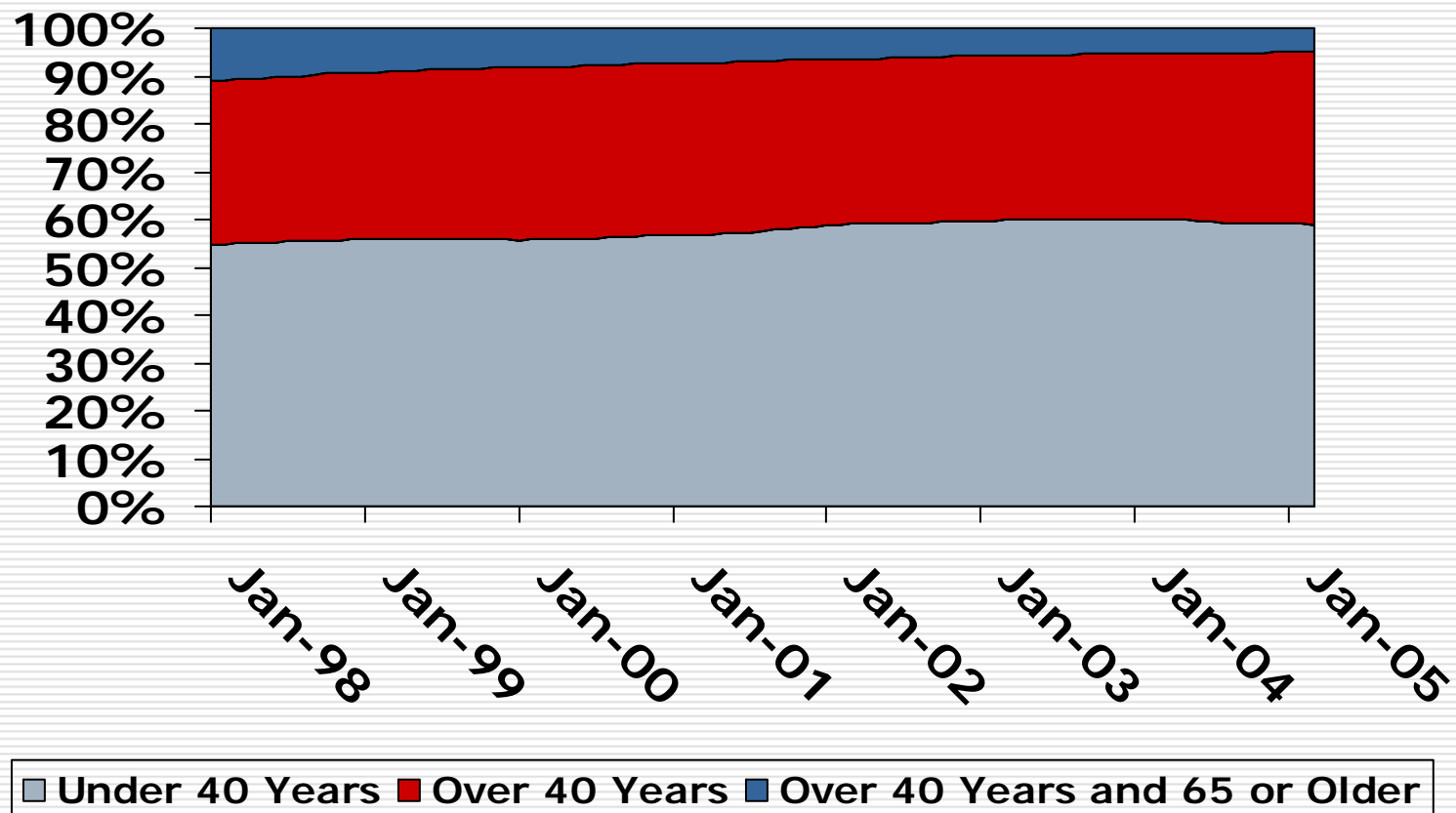
Difference in Age Between Payee and Youngest Child



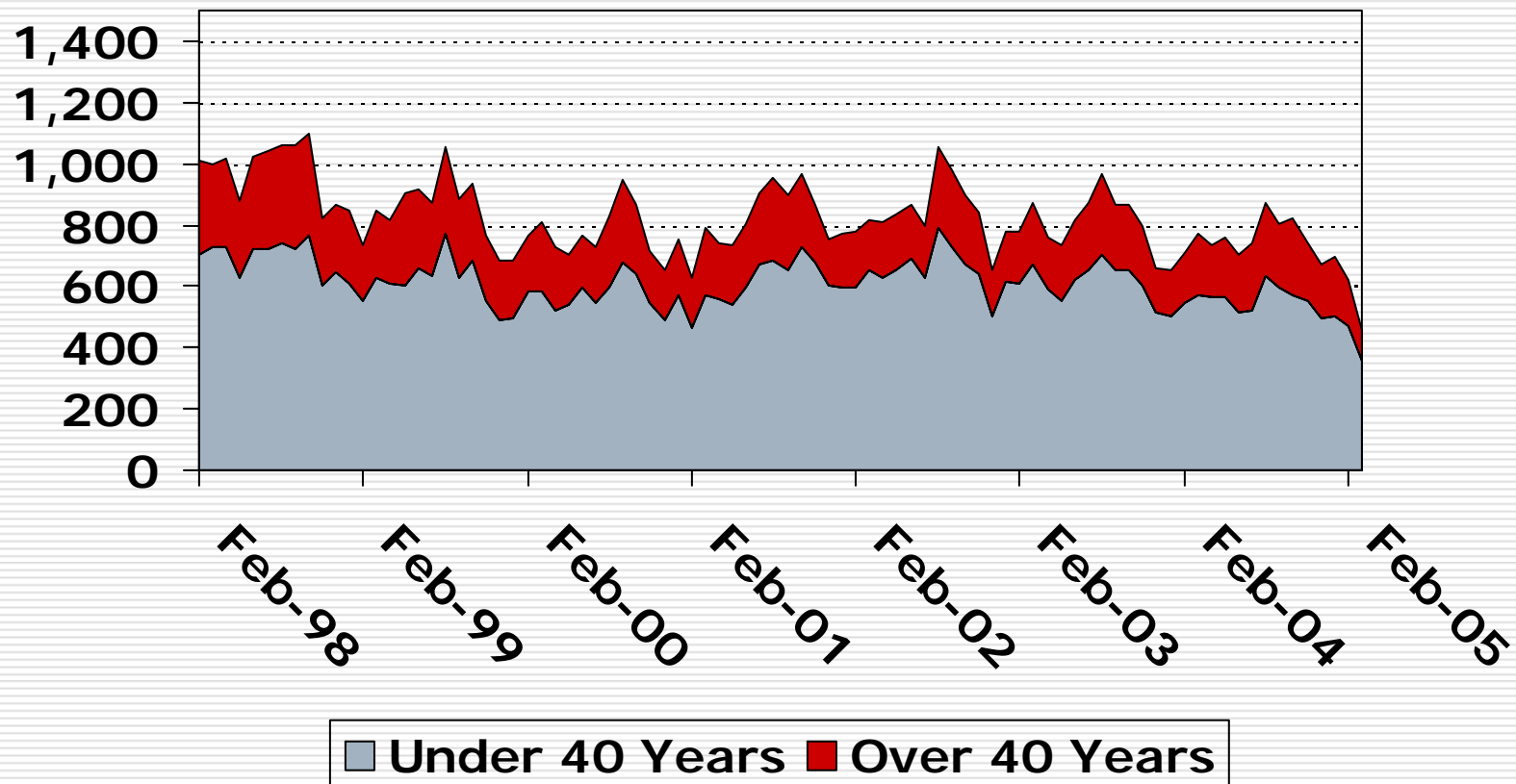
Difference in Age Between Payee and Youngest Child



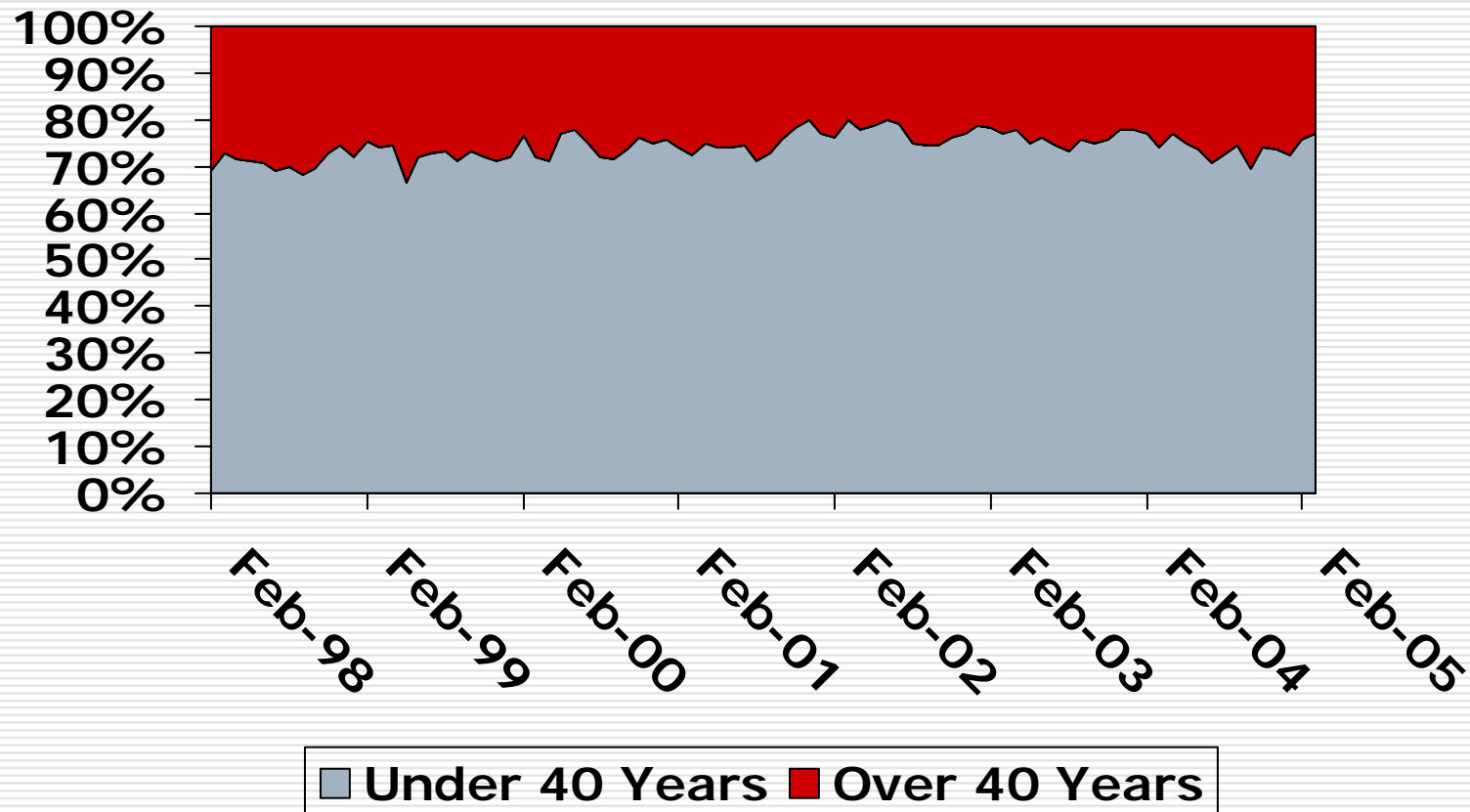
Difference in Age Between Payee and Youngest Child



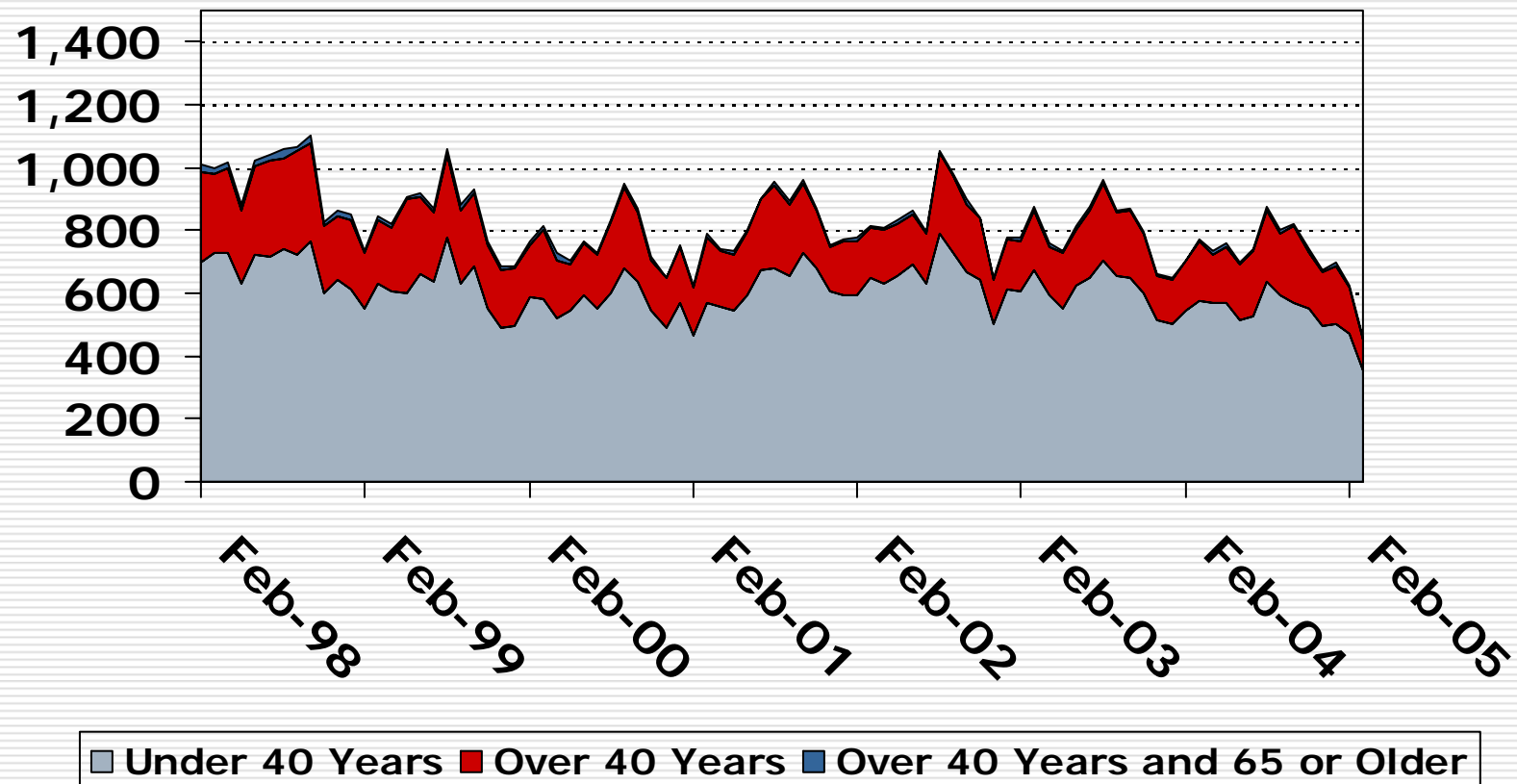
Difference in Age Between Payee and Youngest Child by Entry Cohorts



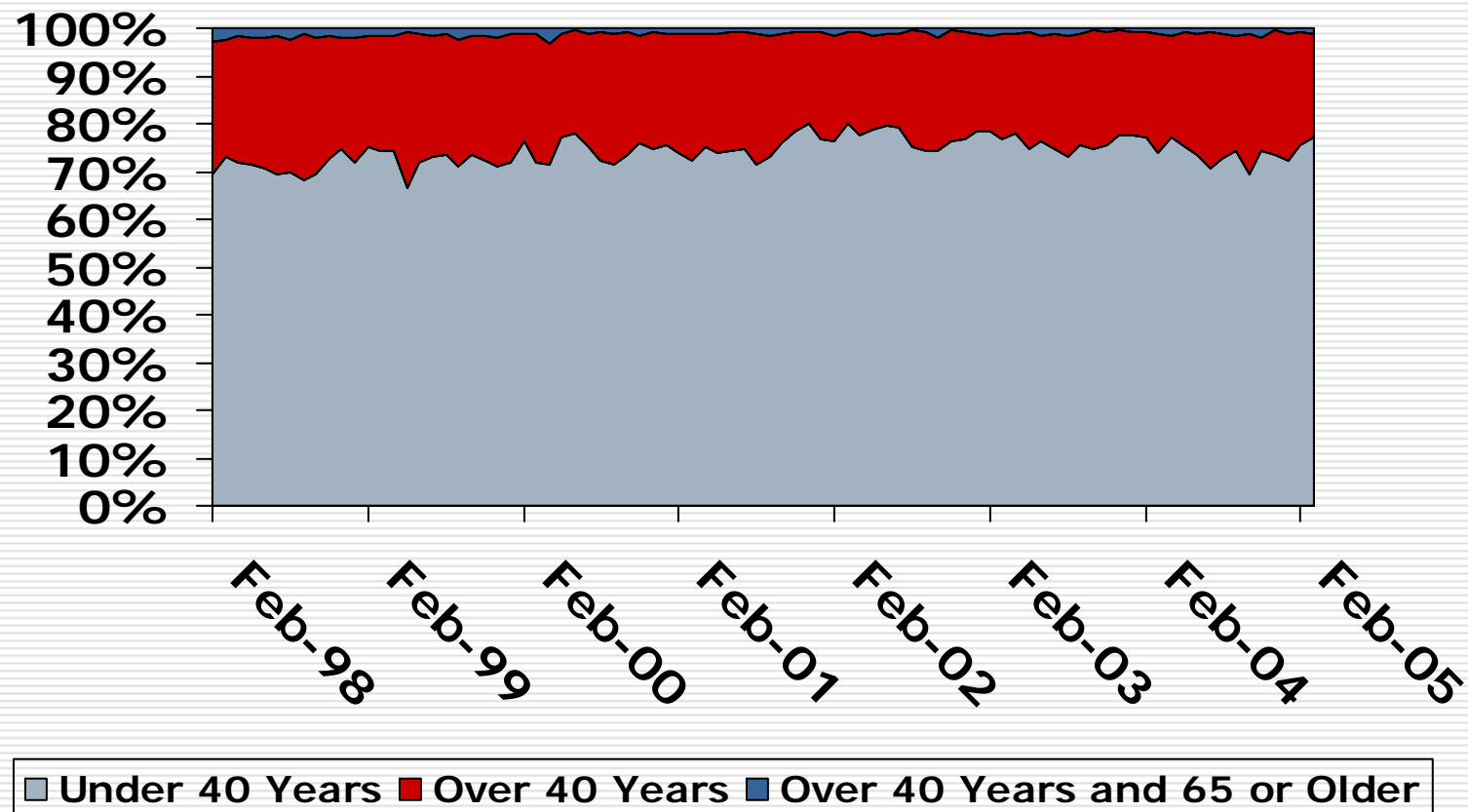
Difference in Age Between Payee and Youngest Child by Entry Cohorts



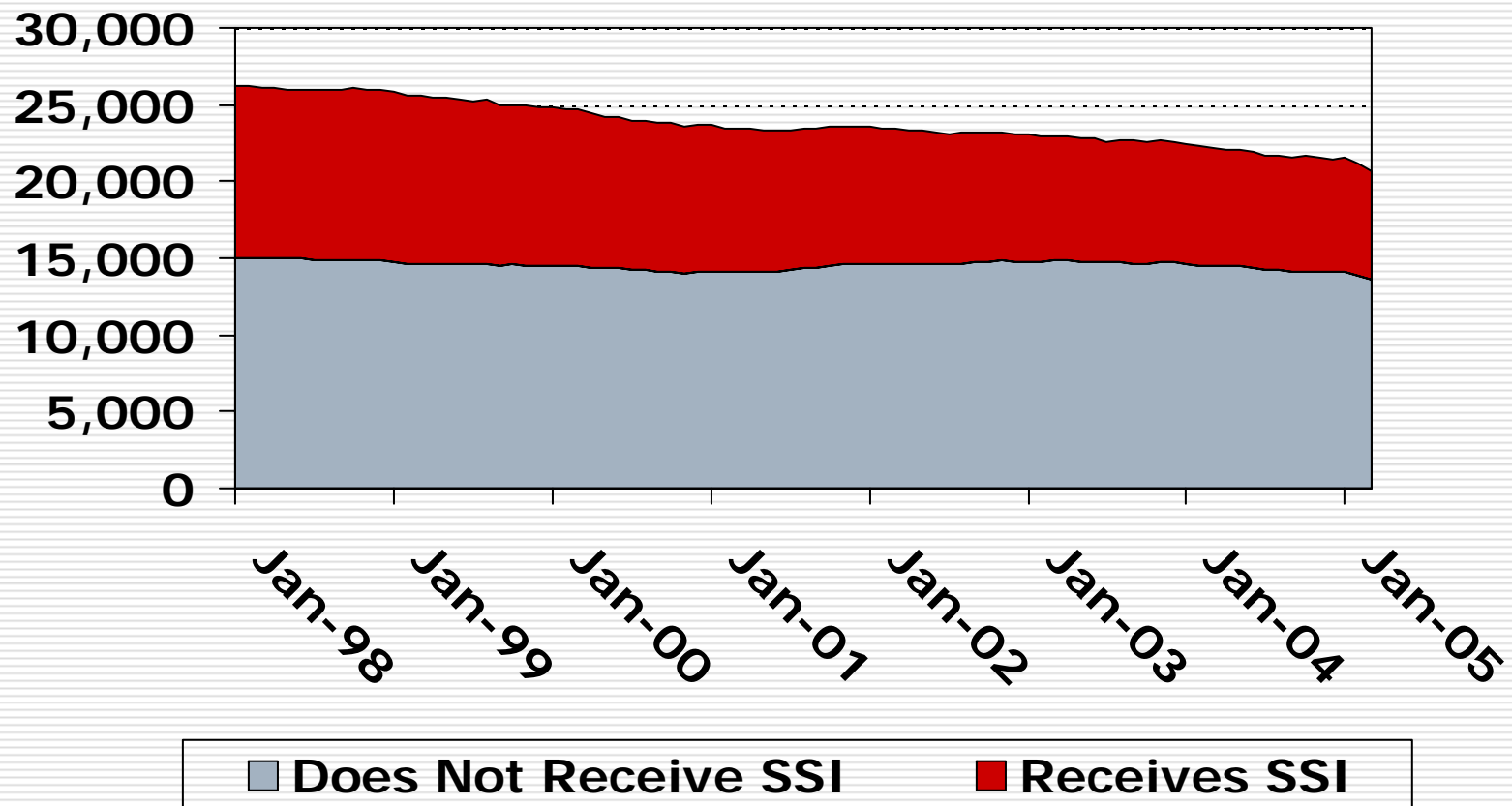
Difference in Age Between Payee and Youngest Child by Entry Cohorts



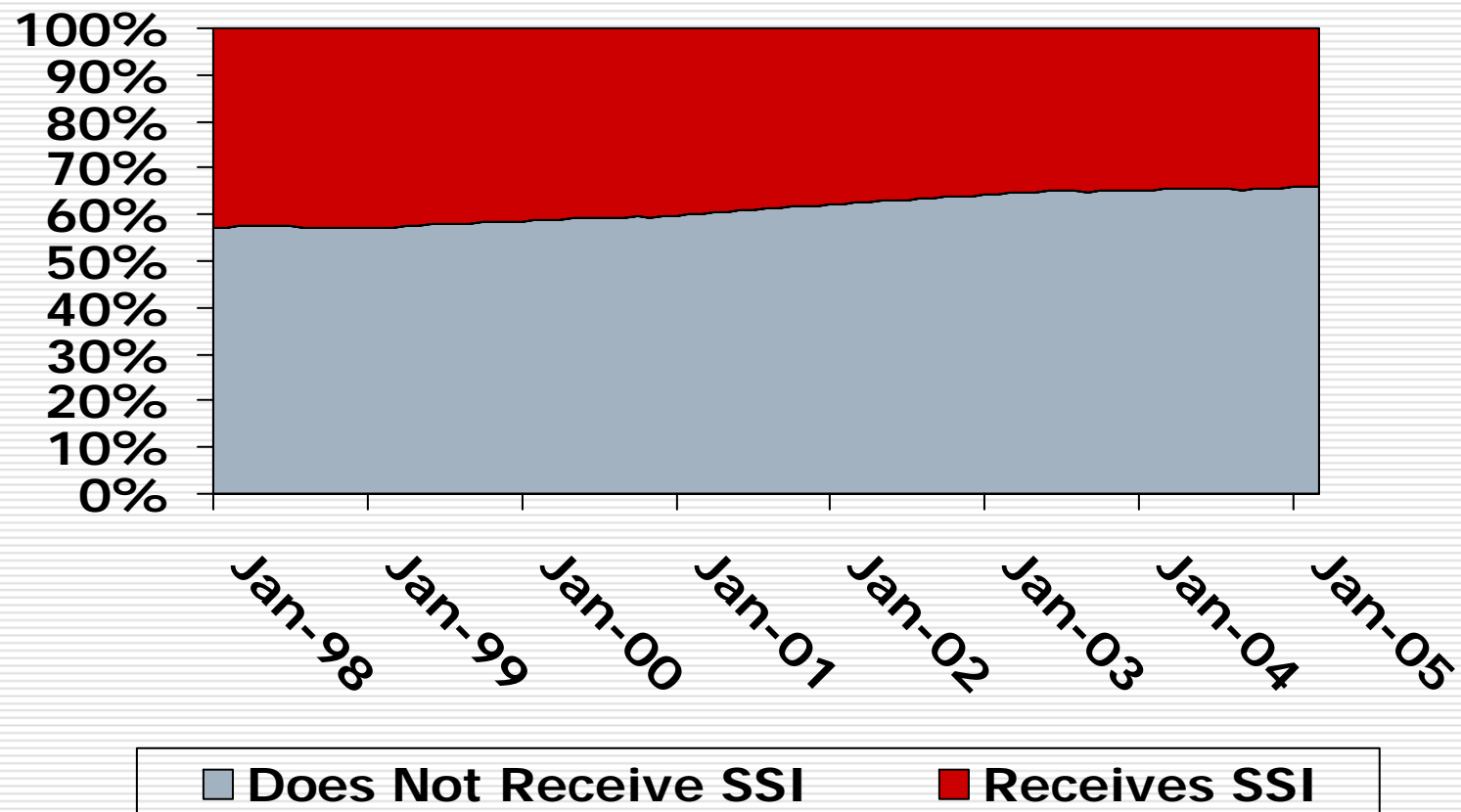
Difference in Age Between Payee and Youngest Child by Entry Cohorts



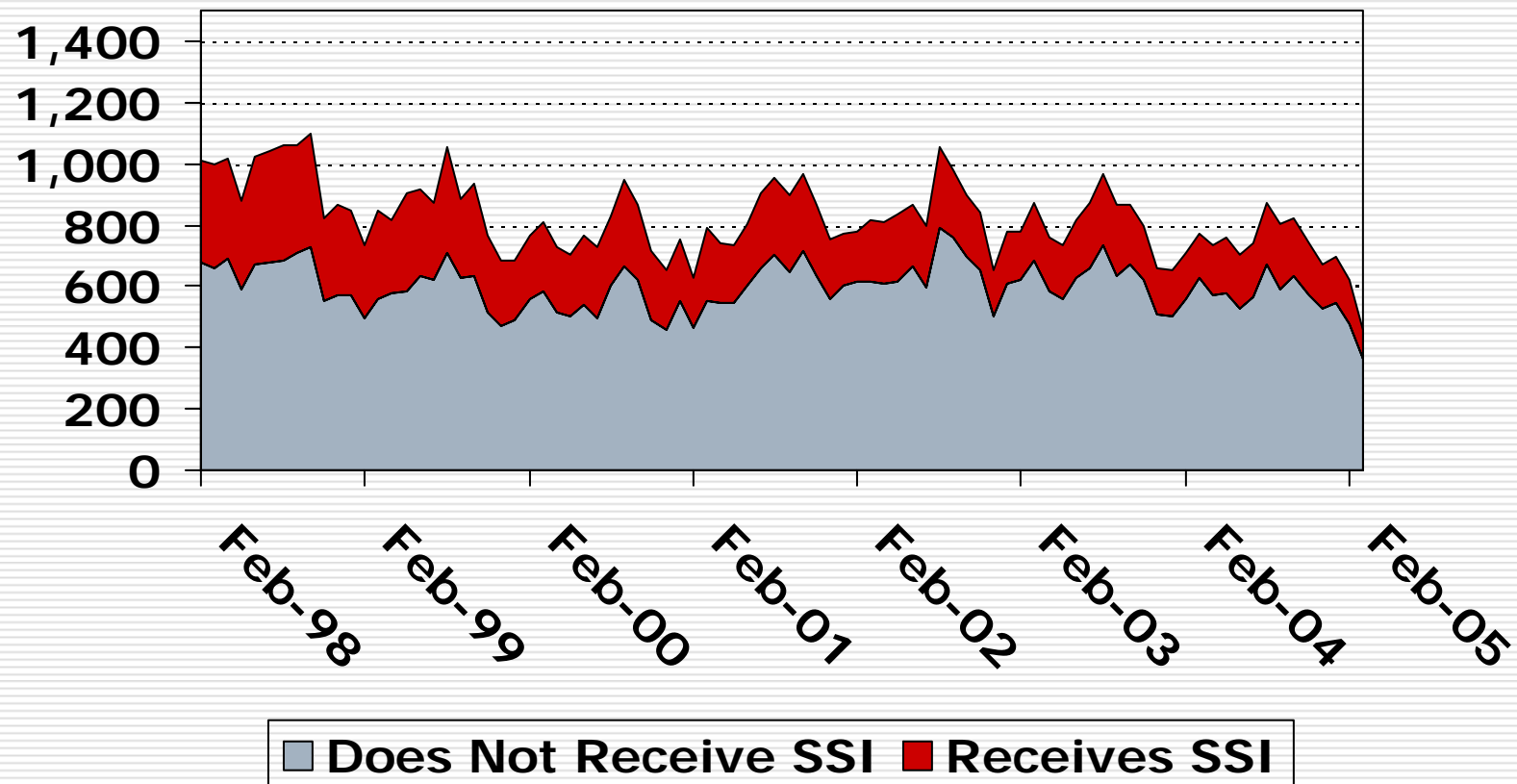
Receipt of Supplemental Security Income by Payee



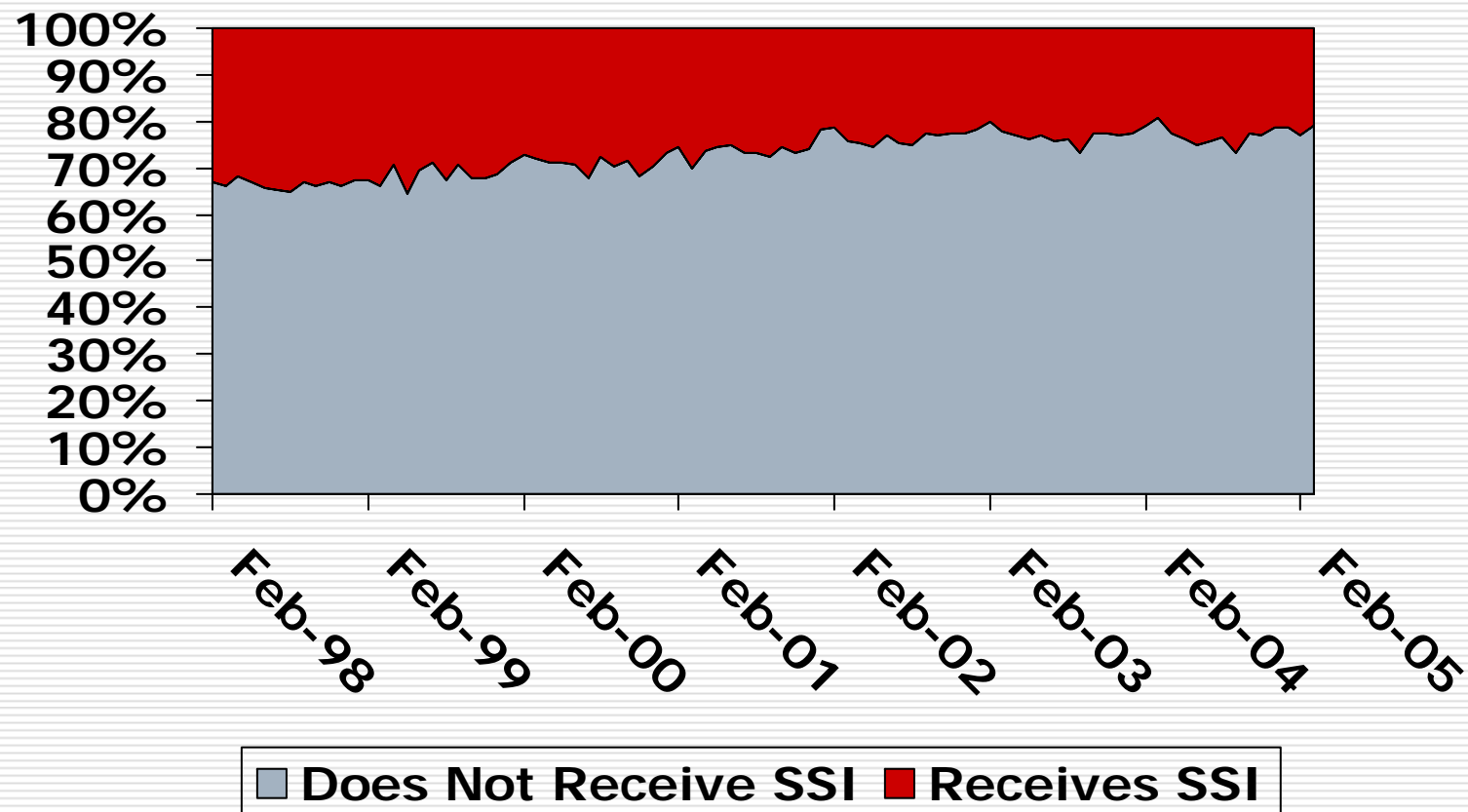
Receipt of Supplemental Security Income by Payee



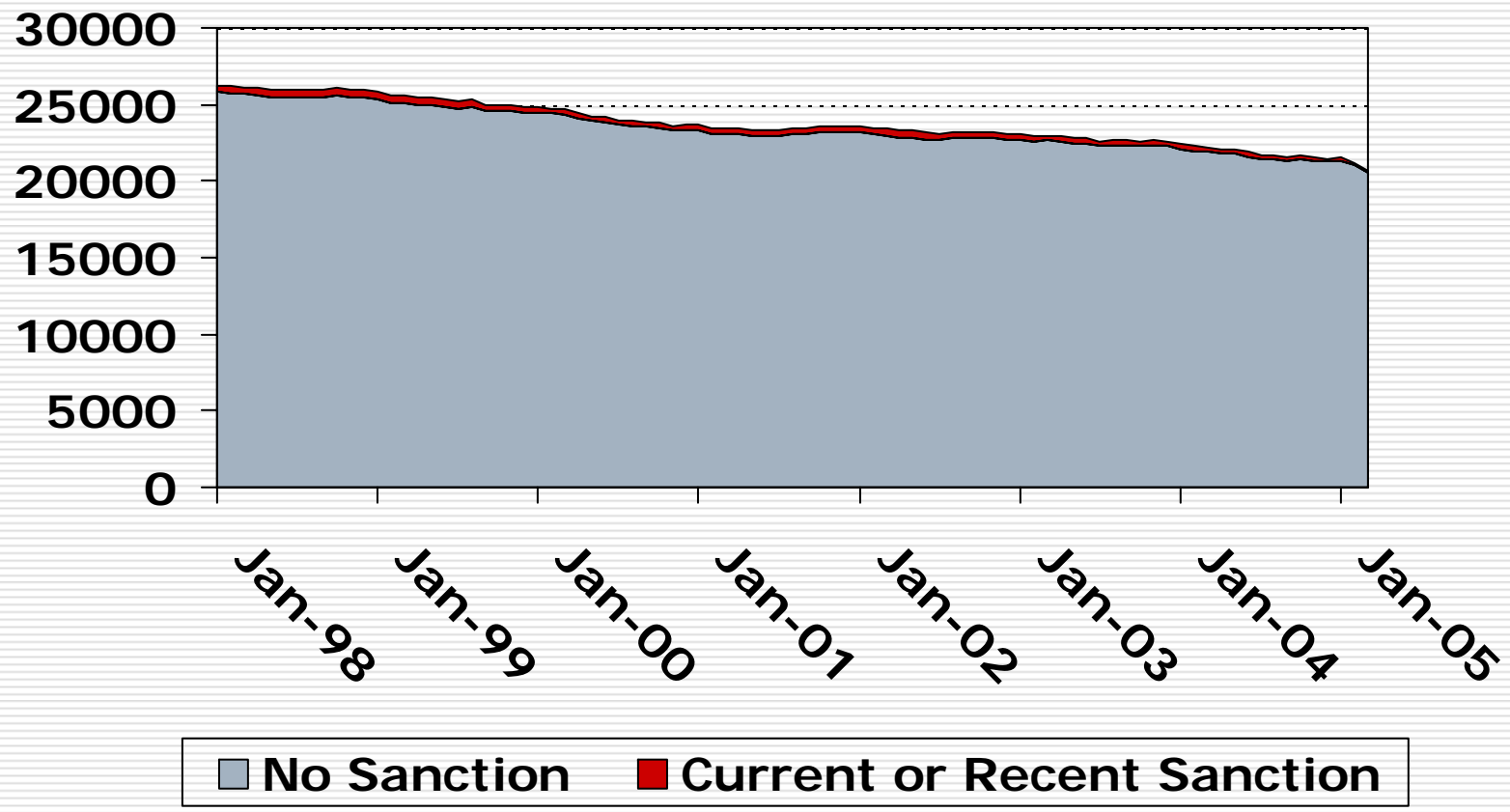
Receipt of Supplemental Security Income by Payee by Entry Cohort



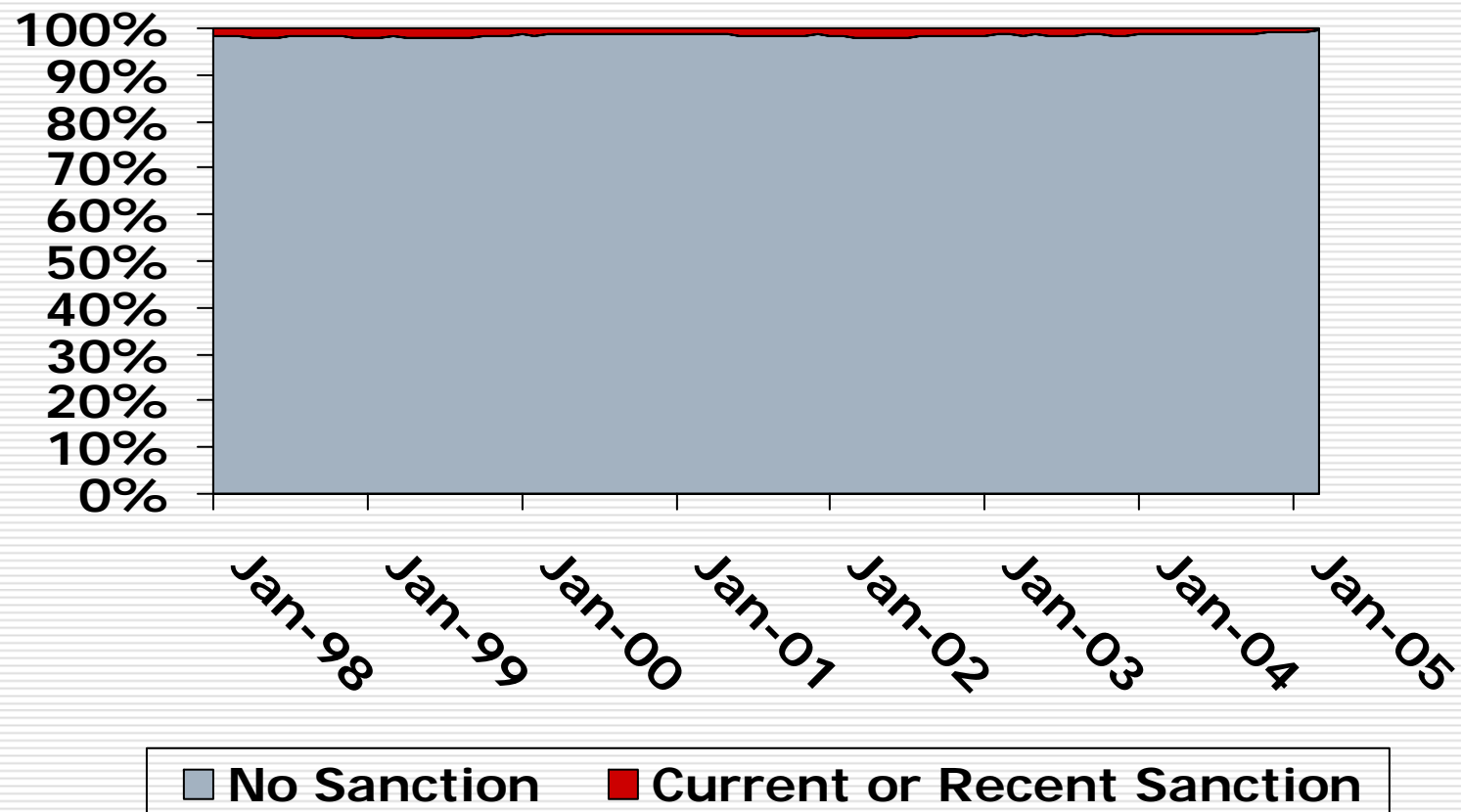
Receipt of Supplemental Security Income by Payee by Entry Cohort



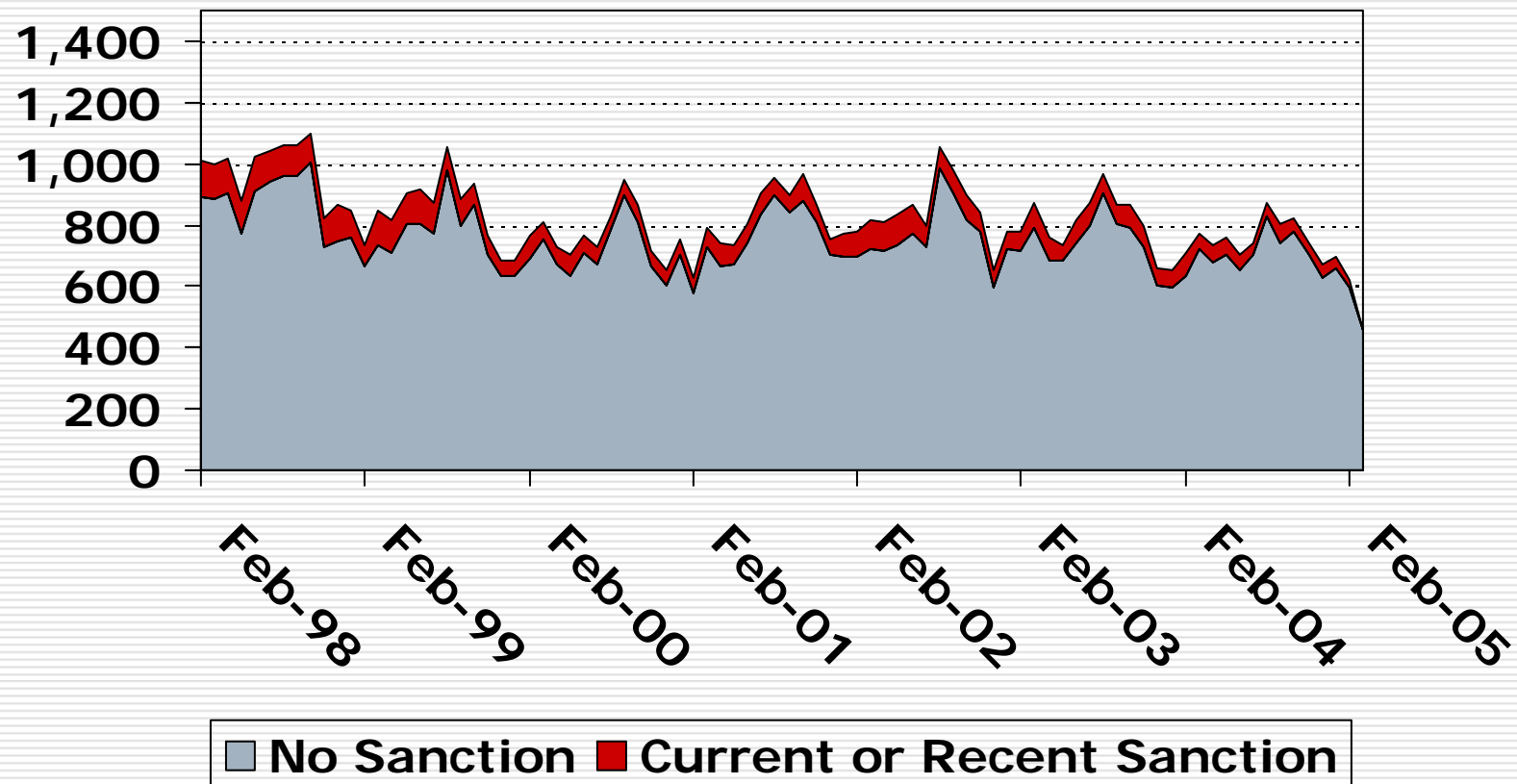
Presence of a Recent or Current Sanction by Month



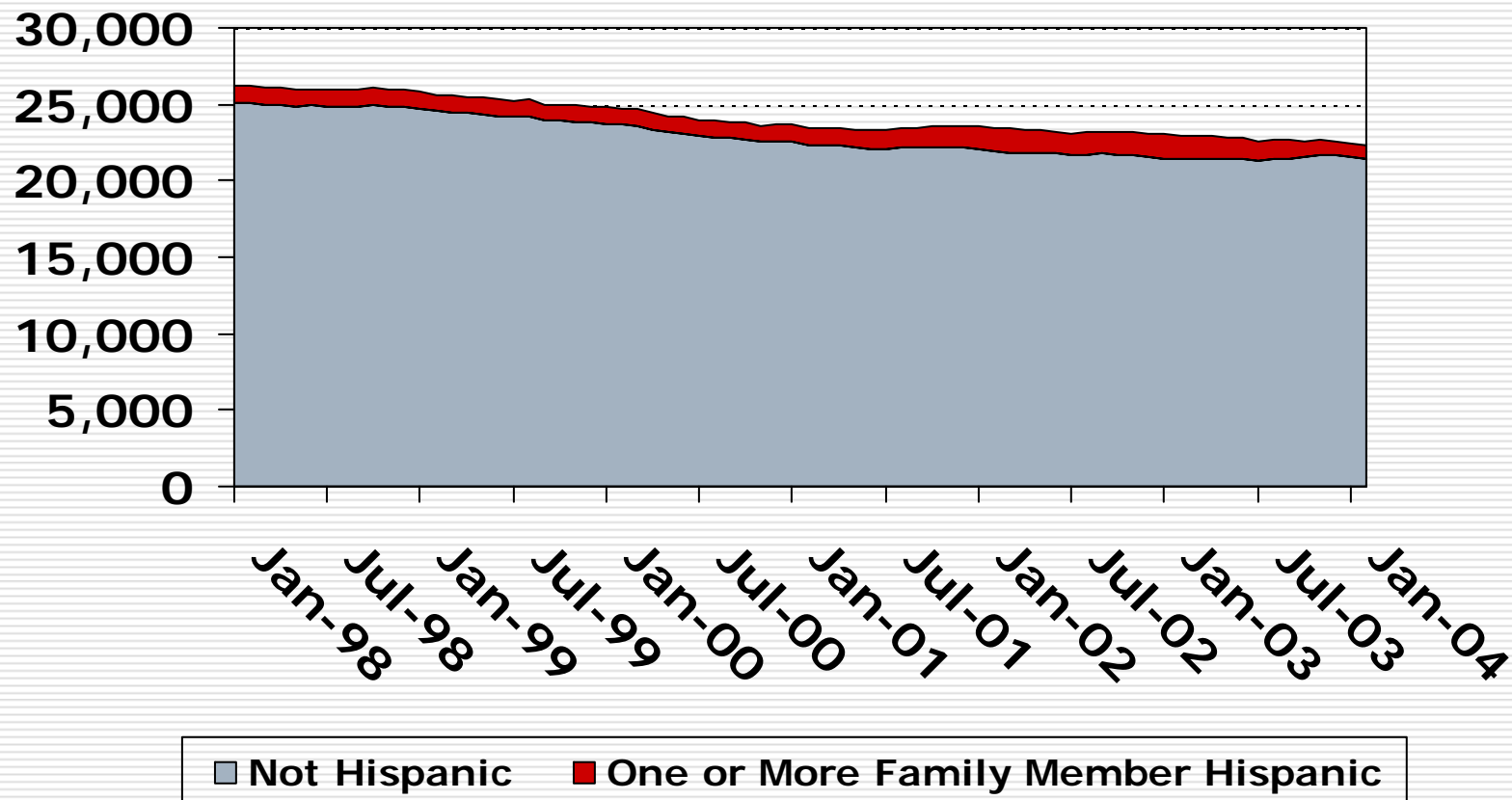
Presence of a Recent or Current Sanction by Month



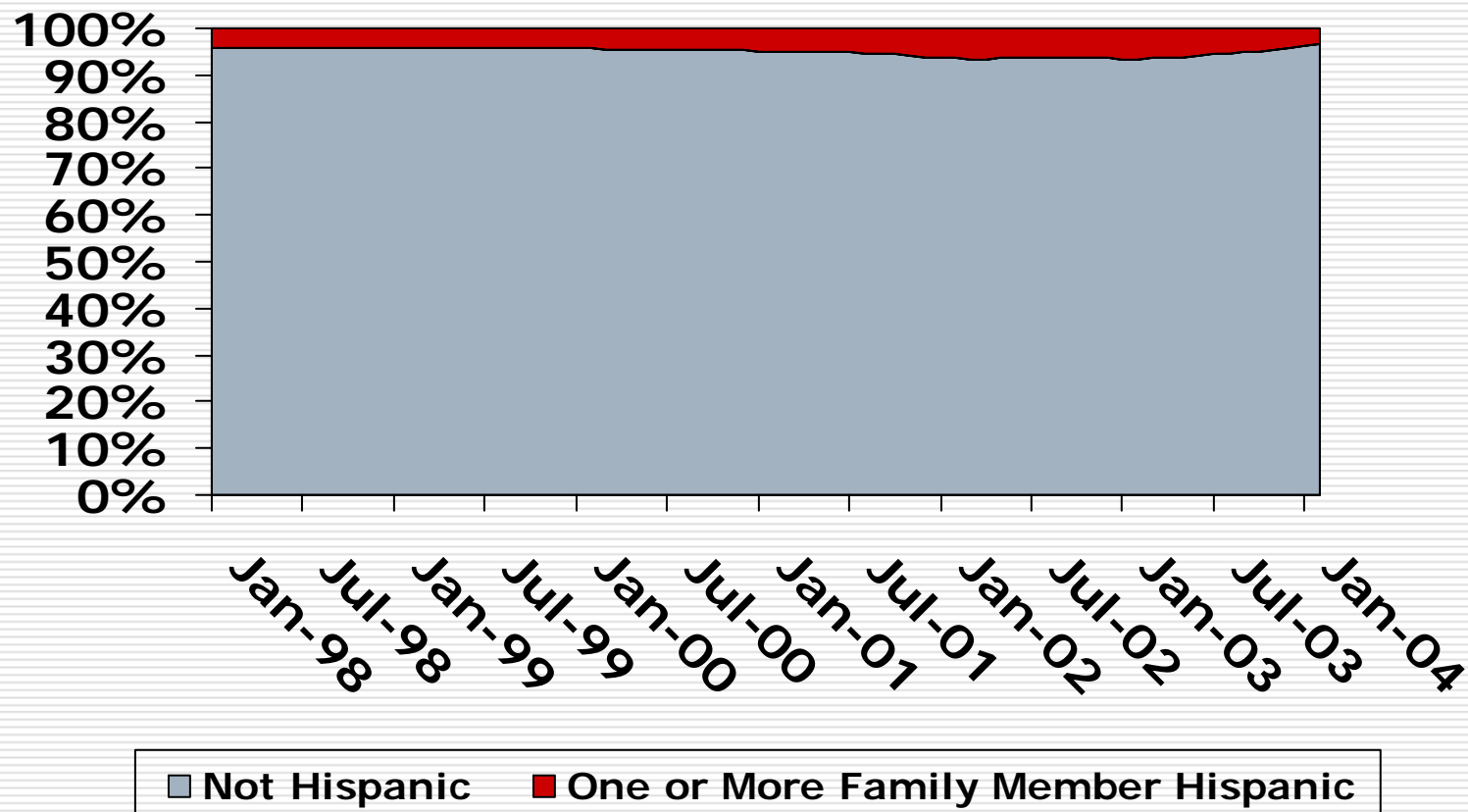
Presence of a Recent or Current Sanction by Entry Cohort



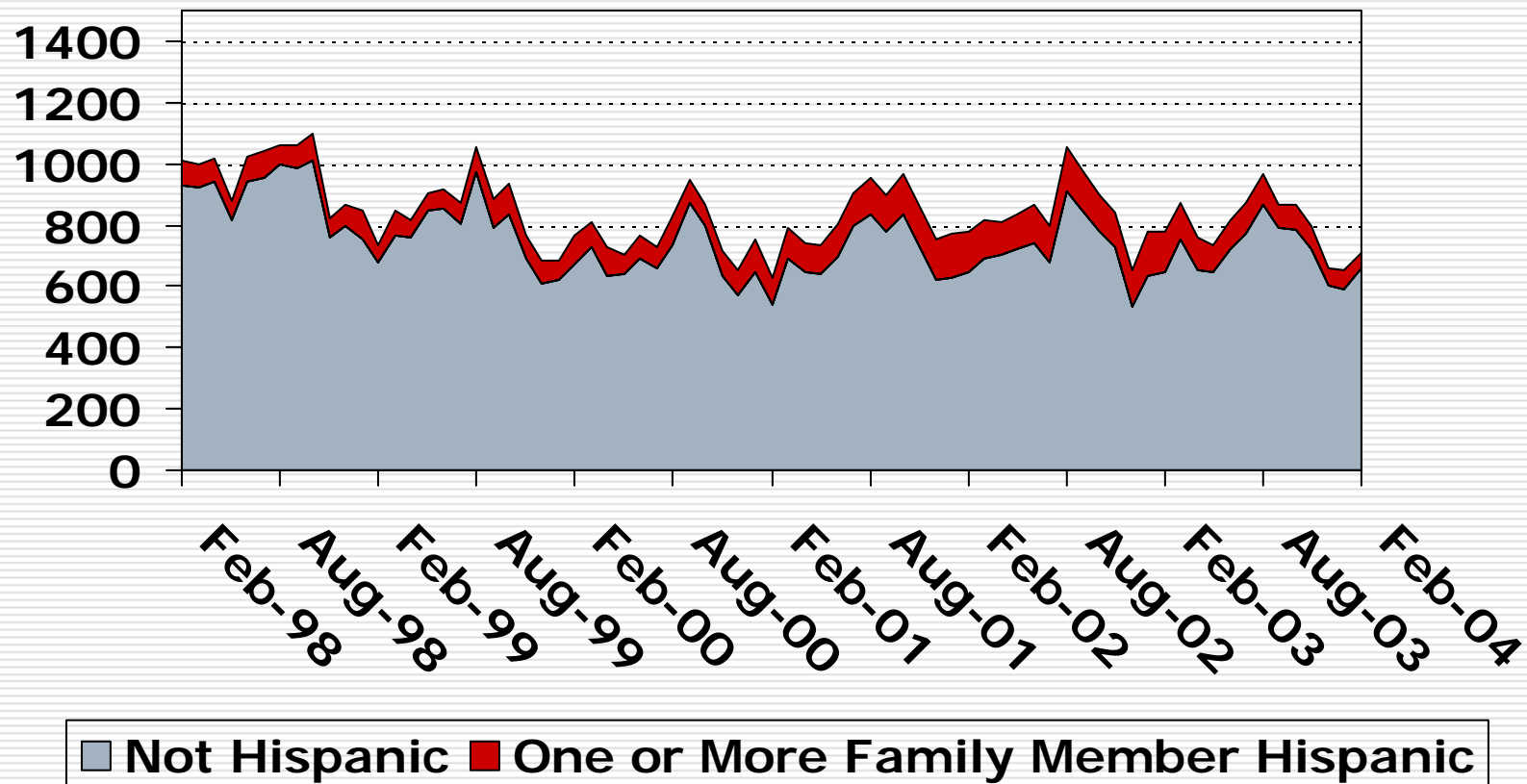
Some or All Family Members are Hispanic or Latino



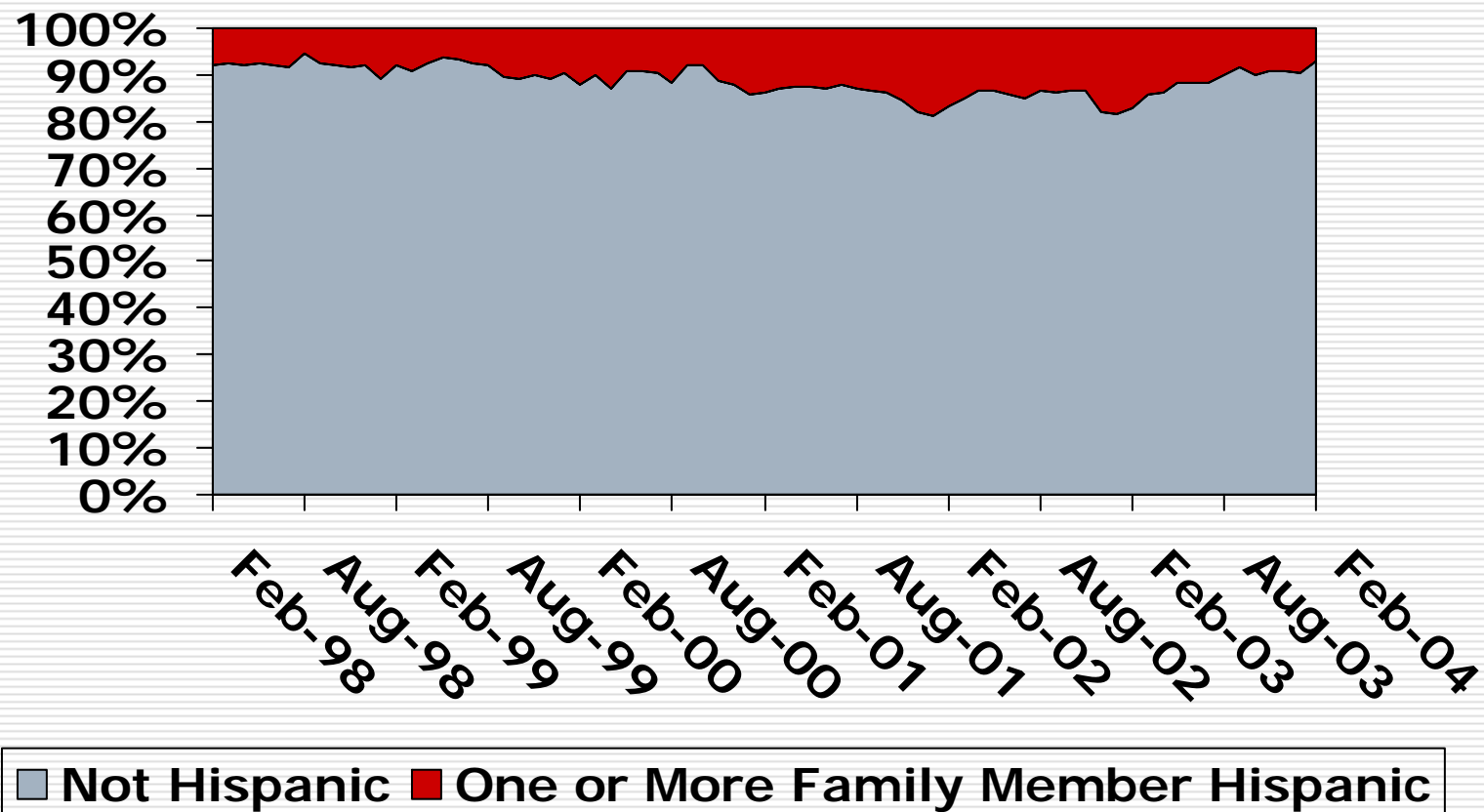
Some or All Family Members are Hispanic or Latino



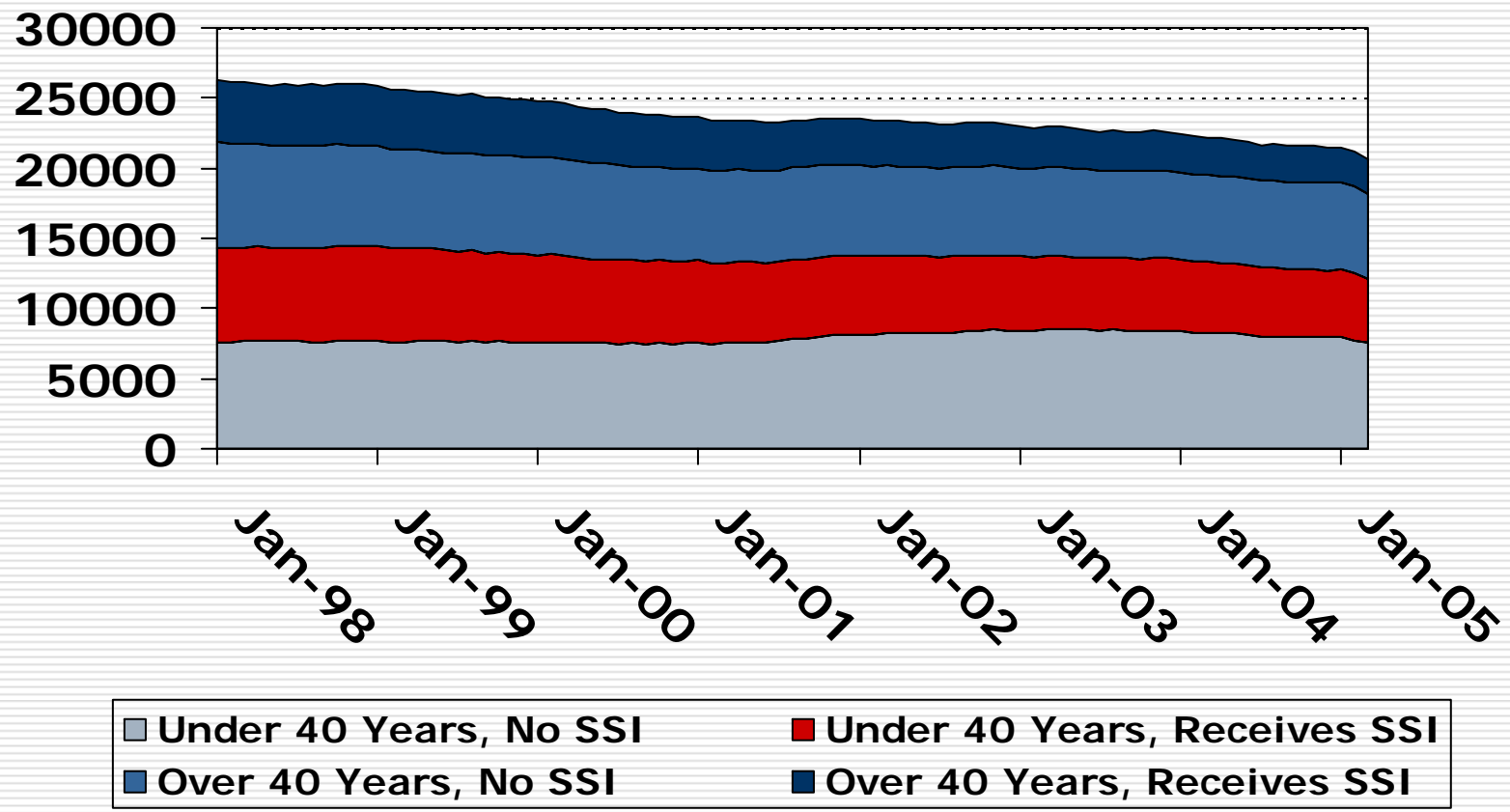
Some or All Family Members are Hispanic or Latino by Entry Cohort



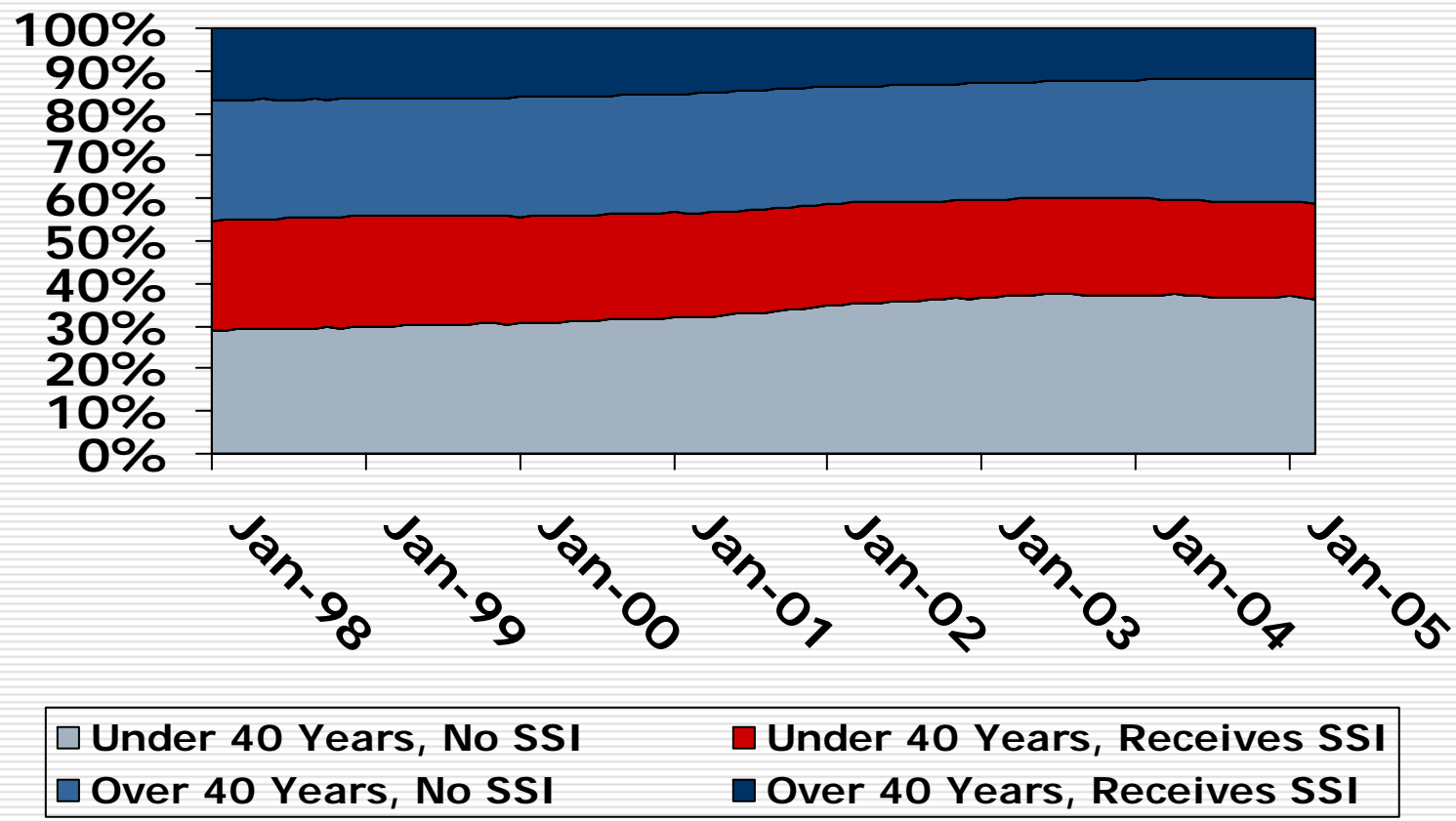
Some or All Family Members are Hispanic or Latino by Entry Cohort



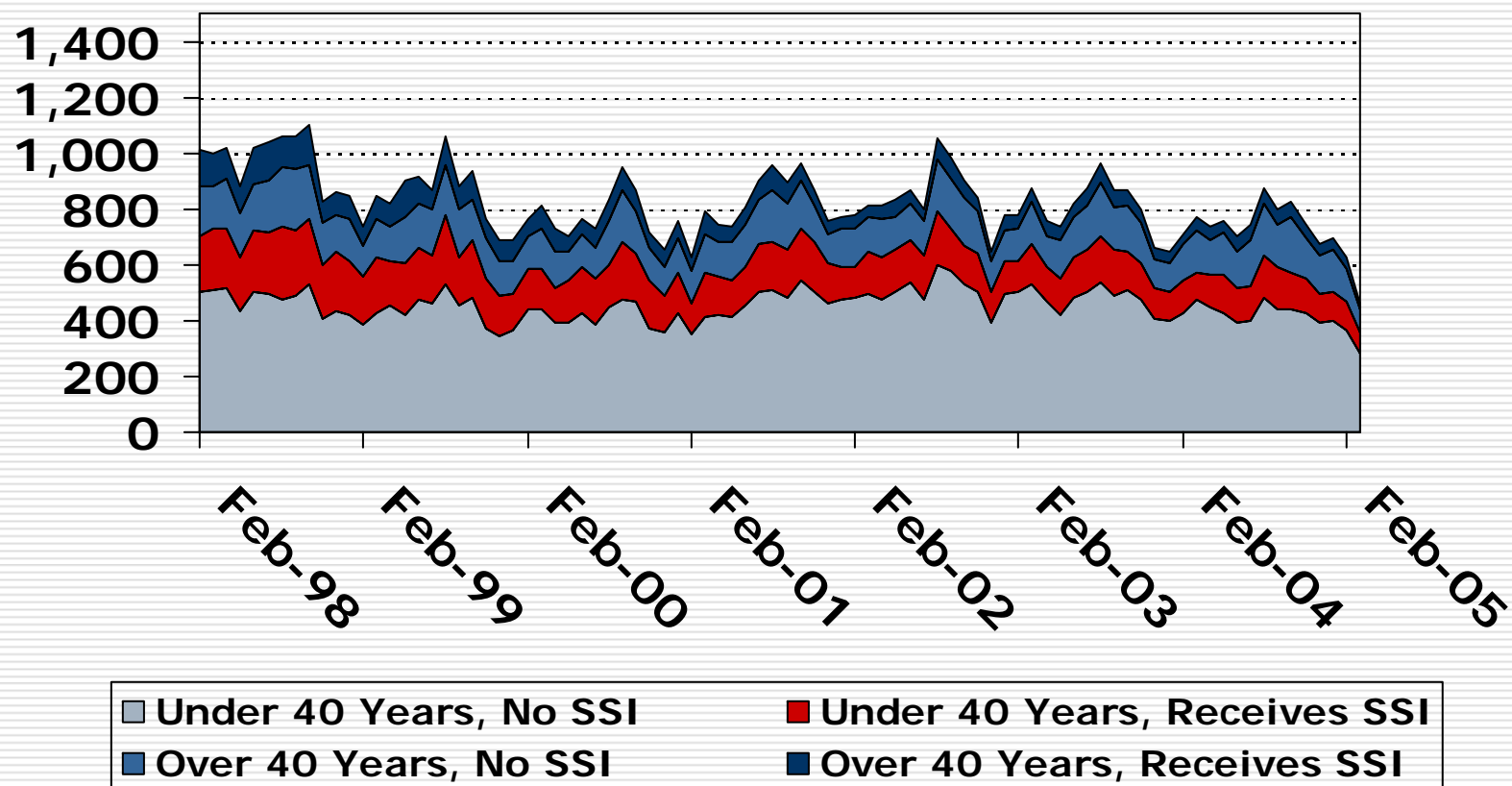
Difference in Age Between Payee and Youngest Child and Receipt of SSI



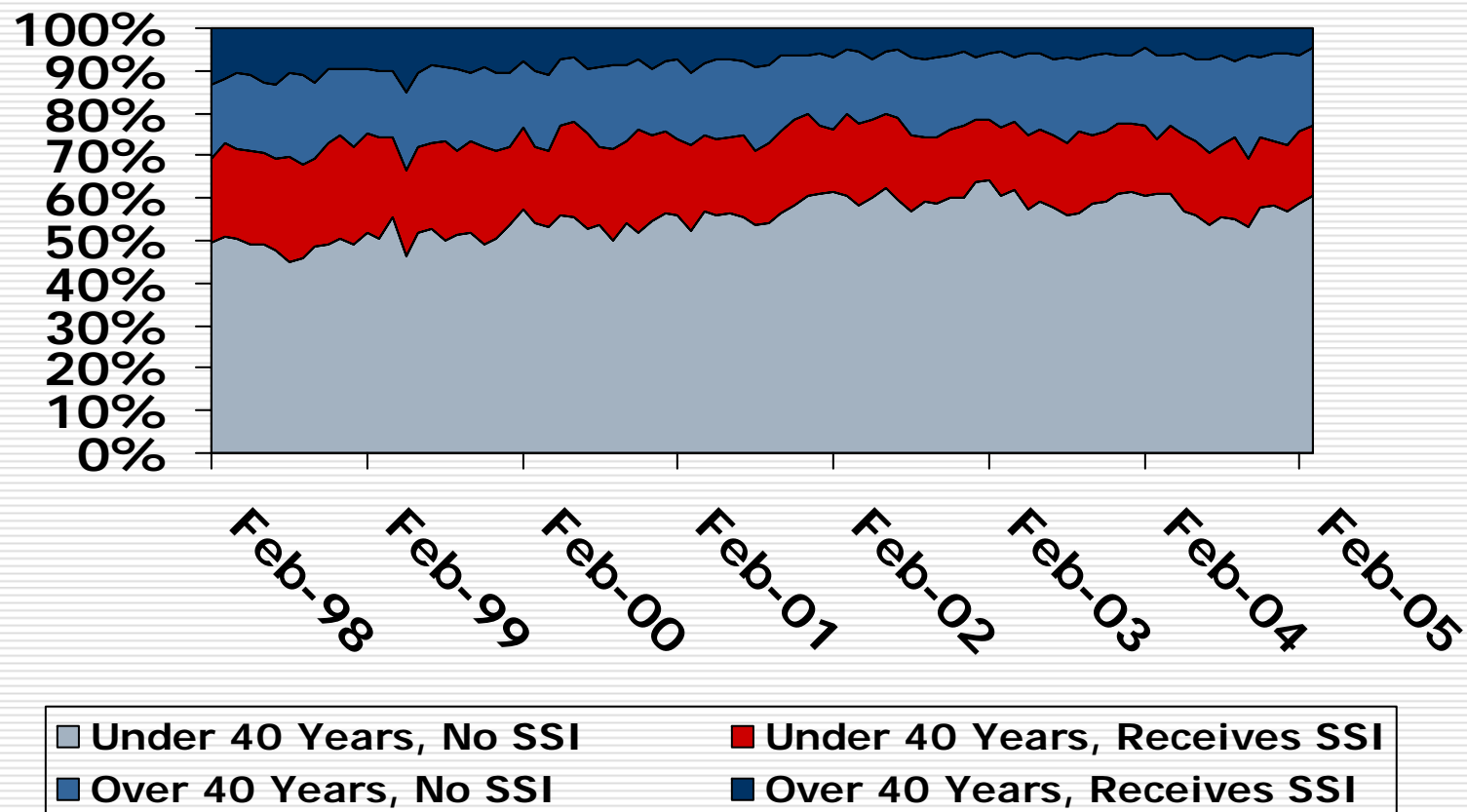
Difference in Age Between Payee and Youngest Child and Receipt of SSI



Difference in Age Between Payee and Youngest Child and Receipt of SSI by Entry Cohort



Difference in Age Between Payee and Youngest Child and Receipt of SSI by Entry Cohort



Demonstration of Web Site

URL:

<http://ssw.unc.edu/workfirst>



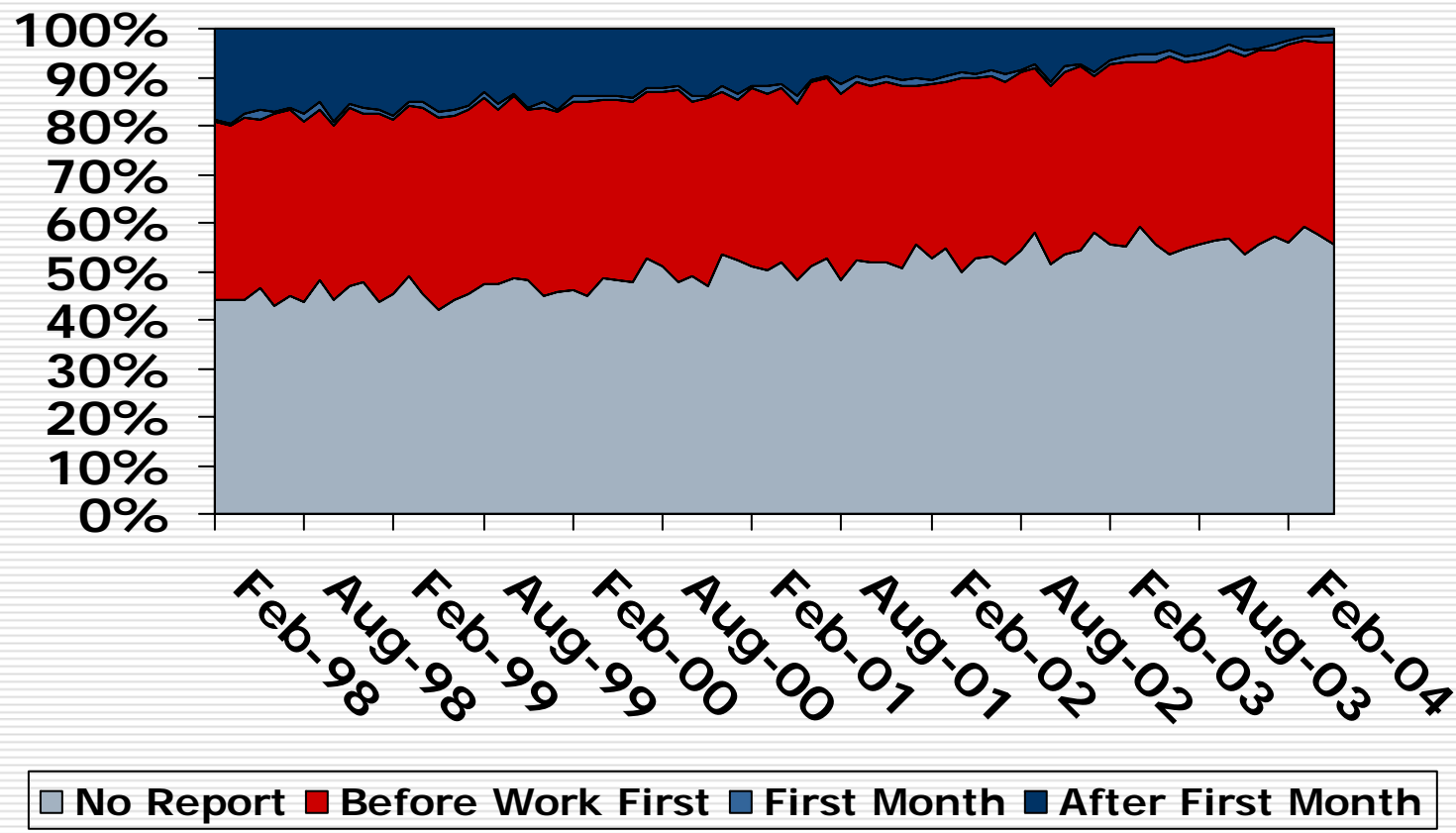
THE UNIVERSITY
of NORTH CAROLINA
at CHAPEL HILL

Trapped Between Two Systems

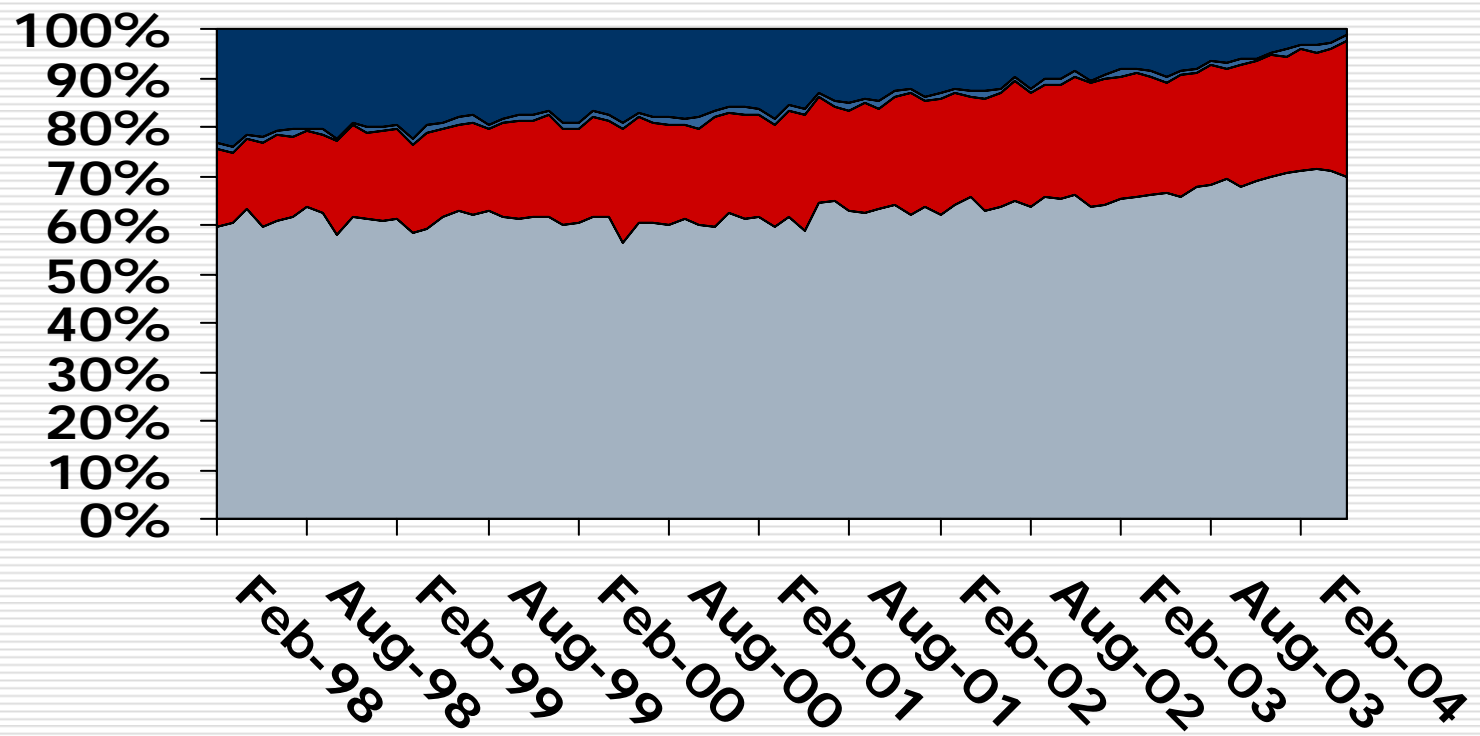
- ❑ Child only cases are similar in many respects to foster care cases
- ❑ An assistance payment is made to a non-parental caretaker relative to care for a child
- ❑ Child only cases have a higher rate of involvement with the child welfare system than other cases



Timing of First Report of Abuse and Neglect for Child Only Cases

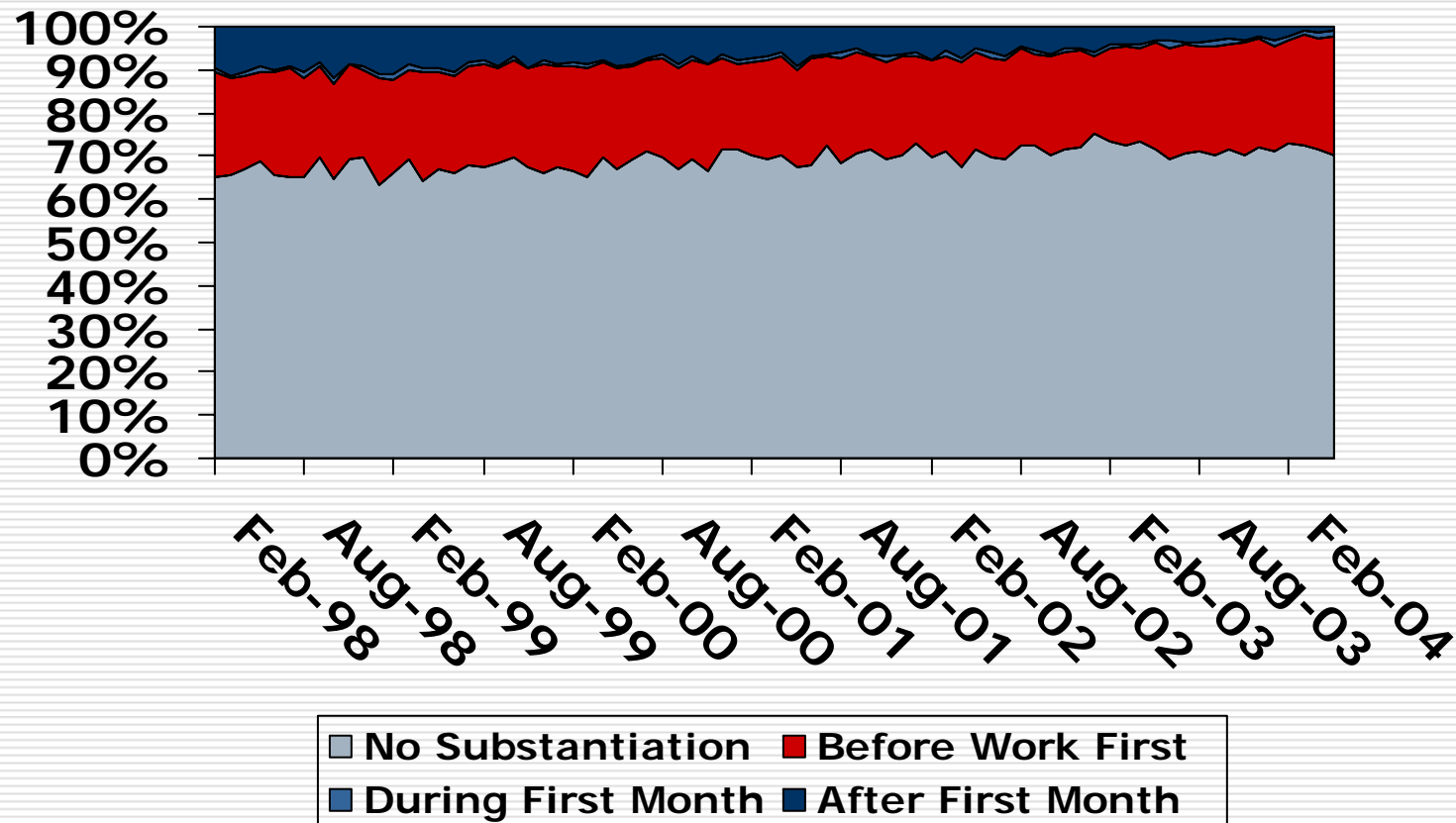


Timing of First Report of Abuse and Neglect for Never Child Only Cases

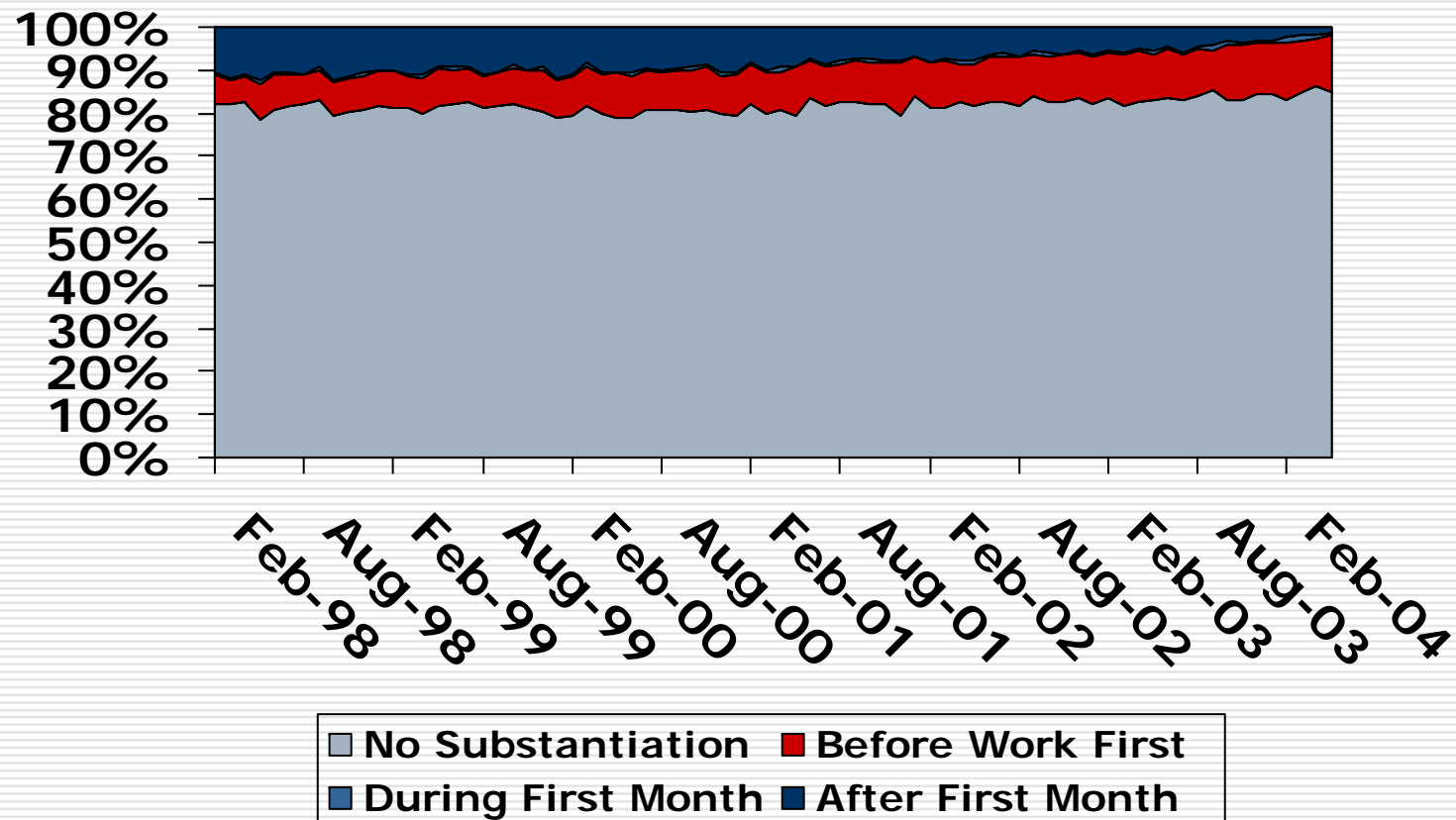


■ No Report ■ Before Work First ■ During First Month ■ After First Month

Timing of First Substantiation of Abuse and Neglect for Child Only Cases



Timing of First Substantiation of Abuse and Neglect for Never Child Only Cases



Summary

- ❑ Child only cases are similar in many respects to foster care
- ❑ An assistance payment is made instead of a foster care payment
- ❑ Child only cases have a higher rate of involvement with child welfare than non-child only cases



Summary

- Child only cases tend to have a lower rate of reports and substantiations after entering Work First than non-child only cases



For More Information...

□ Contact:

D. F. Duncan

UNC-CH School of Social Work

dfduncan@email.unc.edu

<http://ssw.unc.edu/workfirst>

