



Preliminary Findings from the Multi-site Evaluation of the Serious and Violent Offender Reentry Initiative

Debbie Dawes, M.P.A.
RTI International

AAHMI Conference
June 17, 2008





Overview of SVORI

- **Serious and Violent Offender Reentry Initiative funded agencies to develop programs to improve criminal justice, employment, education, health, and housing outcomes for released prisoners**
- **69 agencies received federal funds (\$500,000 - \$2,000,000 over 3 years) to develop 89 programs that**
 - **Targeted adult & juvenile populations**
 - **Incorporated partnerships among state and local agencies to provide comprehensive services to prisoners returning home**
 - **Were locally designed to meet local needs and organizational capabilities**

Overview of Multi-site Evaluation of SVORI

- **Implementation Assessment**: Identify local SVORI program components —what was intended & what was achieved
- **Impact Evaluation**: Determine the extent to which SVORI increased services & programming; improved employment, health, & personal functioning; and reduced criminal activity of returning prisoners
- **Cost-benefit Analysis**: Determine whether benefits outweigh the costs (subset of impact sites)

Findings from the Implementation Assessment

- **SVORI programs were run by adult or juvenile correctional agencies, with the involvement of community- and faith-based organizations**
- **Most programs delivered reentry services prior to and after release, but the pre-release phase was prioritized**
- **Programs geographically concentrated, both pre-release (specific institutions) and post-release (specific release communities)**
- **Primary focus of adult programs**
 - **Employment: 42%**
 - **Community integration: 27%**
 - **Substance use: 14%**
 - **Mental health: 10%**
 - **Education: 2%**
 - **Family: 0%**
 - **Other: 6%**
- **More about service receipt later...**



Findings from the Impact Evaluation

- Findings from the slides that follow are based on a longitudinal study of 1,700 adult males who were released from 14 states
- The men included individuals receiving services through SVORI funding and a comparison group of men who received standard services available at their correctional facilities or in their communities
- The men were interviewed 1 month before release and the at 3-, 9-, and 15-months after release
- This presentation will focus on their reported needs for services at the pre-release interview, the services they actually received, and other information about their reentry experience



Characteristics of Adult Male Respondents

- 29 years of age
- About 40% reported being married or in a steady relationship & about 60% reported having children < 18 years
- About 60% had a HS diploma or GED
- About 2/3rds reported having a job 6 months prior prison & 90% “ever had a job”
- Most had family & friends who were AOD & crime involved
- About 2/3rds reported drug & alcohol use in the 30 days prior to prison



Service Need and Delivery: Programs & Services Measured

- Needs assessment (receipt only)
- Case management (receipt only)
- Staff for release planning (receipt)
- Post release supervision (receipt)
- Legal assistance
- Financial assistance
- Public assistance
- Obtaining identification
- 1-on-1 mentoring
- Assistance obtaining documents
- Housing placements/referrals
- Transportation (post-release only)
- Assistance getting driver's license
- Dental health services
- Physical health services
- Mental health services
- Drug treatment services, AA/NA
- Abuse support groups
- Anger management/violence counseling
- Job services
- Education/GED/tutoring/literacy
- Money management
- Life skills training
- Personal relationships training
- Training to change attitudes regarding criminal behavior
- Domestic violence services
- Assistance with receipt of child support
- Child support debt modification
- Child custody modification
- Parenting skills development
- Assistance with child care



SVORI Top 10 Self-Reported Needs (30 days pre-release)

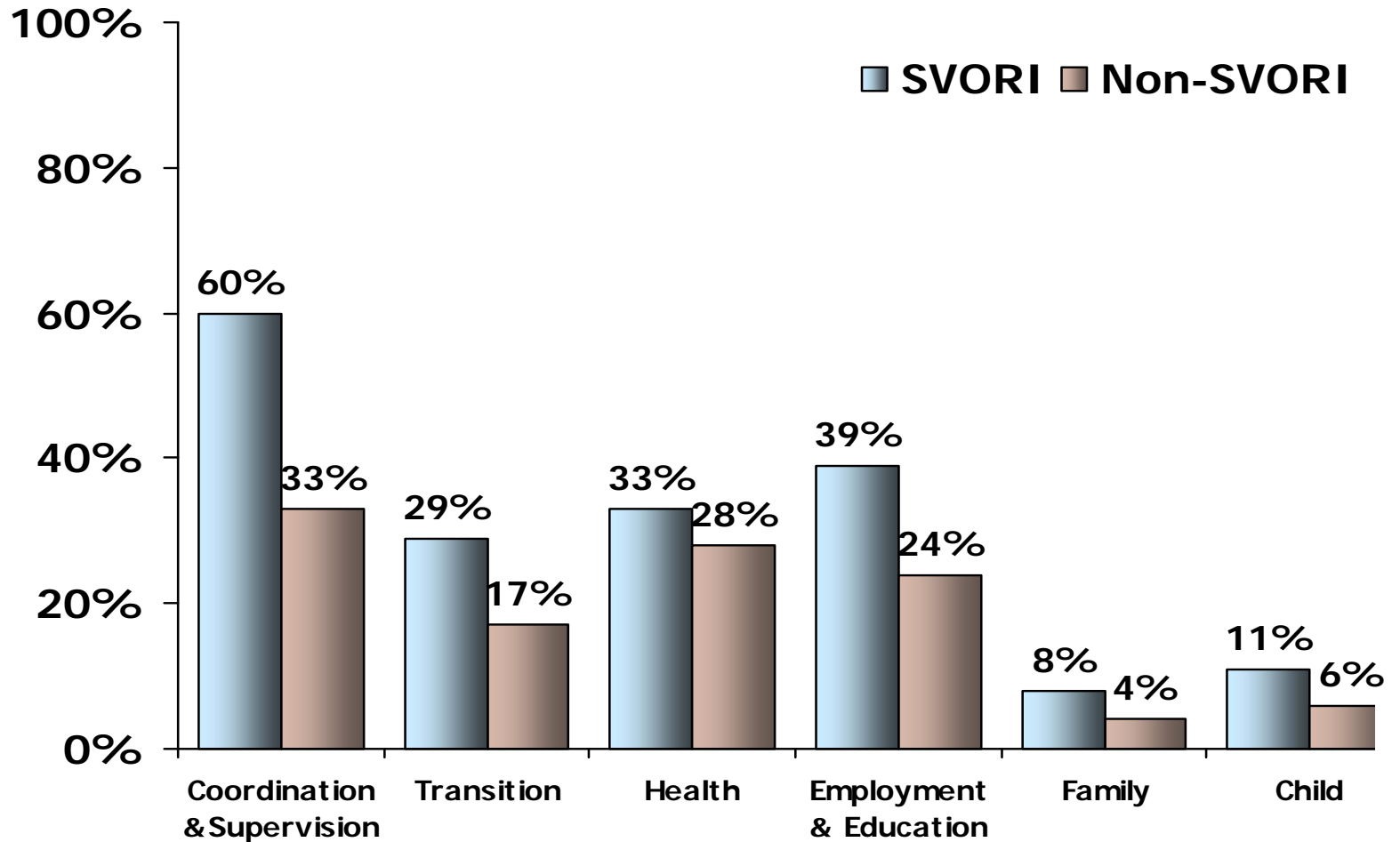
- More education (94%)
- Financial assistance (86%)
- Driver's license (83%)
- Job training (82%)
- Job (80%)
- Public health insurance (75%)
- Life skills (75%)
- Transportation (72%)
- Money management skills (71%)
- Change in criminal attitudes (64%)

Service Needs & Receipt Groups

- **Coordination & Supervision (received only):** needs assessment, case management, worked with anyone to reintegrate, supervision
- **Transition Services:** legal assistance, financial assistance, public benefits assistance, healthcare insurance, mentoring, assistance obtaining documents, finding place to live, transportation, getting drivers license, clothing/food
- **Health Services:** tx for physical, MH, AOD, abuse groups, anger management programs
- **Employment/Education/Skills Building Services:** assistance finding job, educ. services, money management, gen. lifeskills, assistance w/ personal relationships, changing criminal thinking
- **Family Services:** DV support group, batterer intervention
- **Child Services:** getting child support, assistance modifying child support debt, custody, parenting class, assistance finding child care (for the ~ 600 cases with children < 18 years)

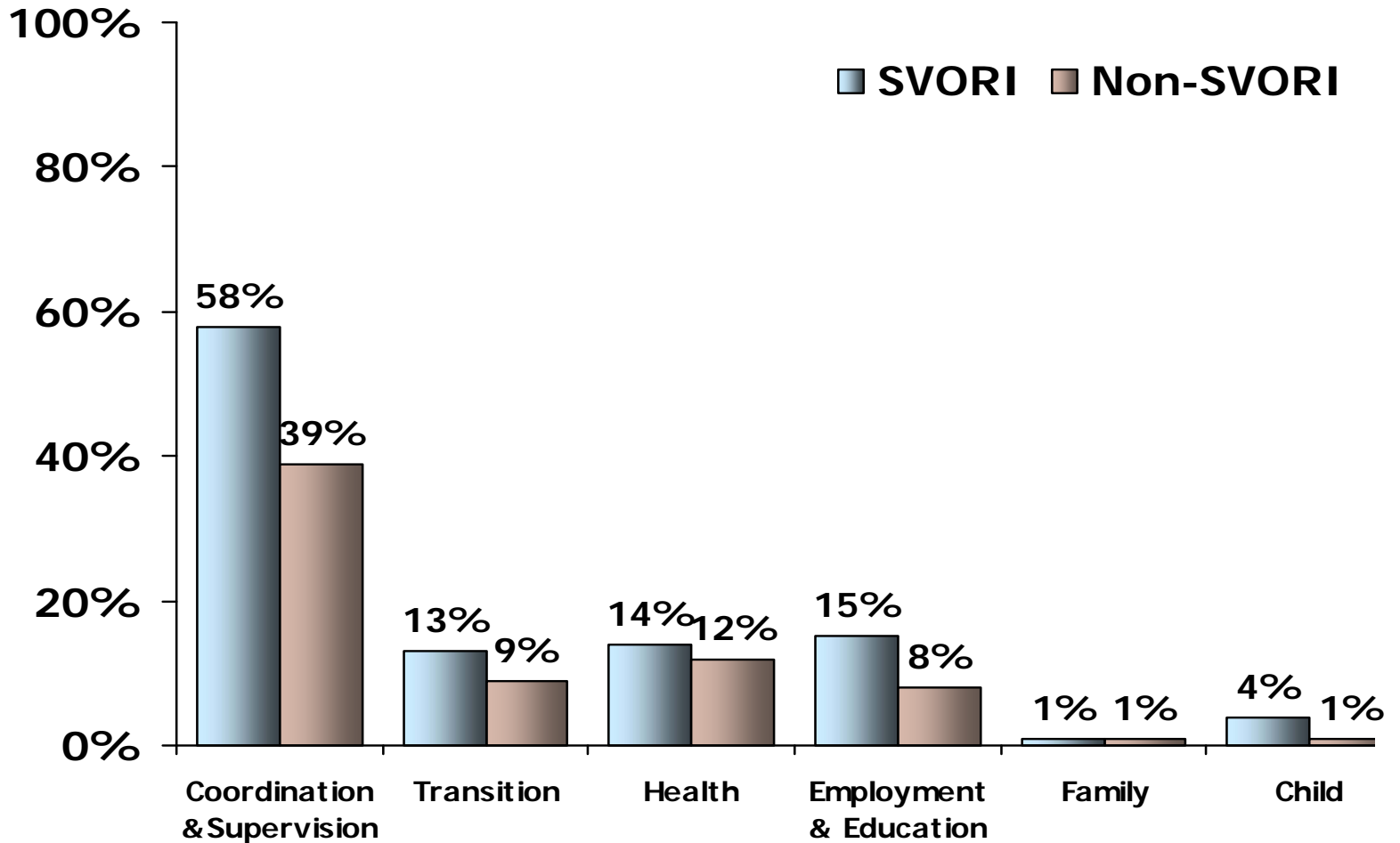


Service Receipt (30 days pre-release)



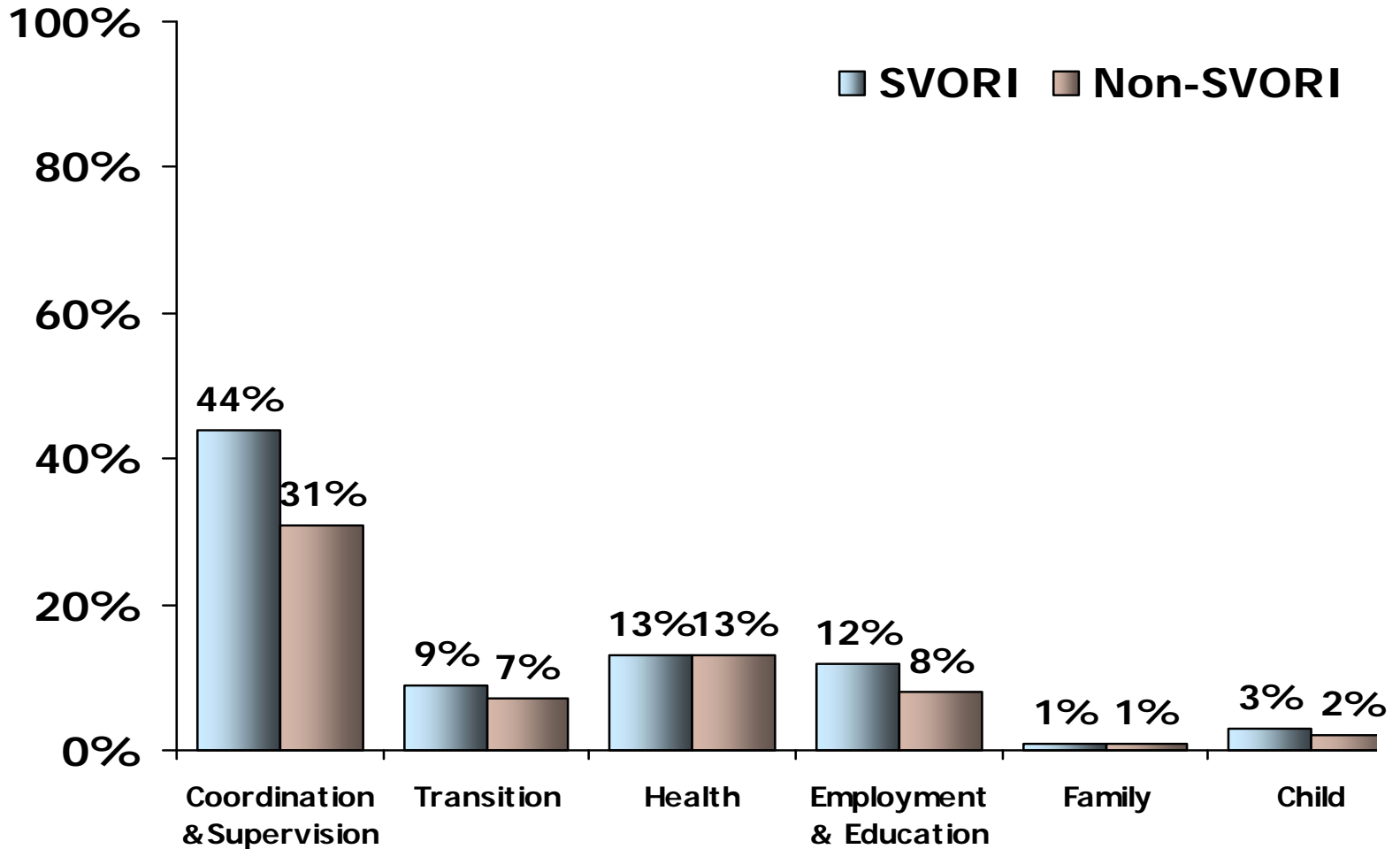


Service Receipt (3 months post release)



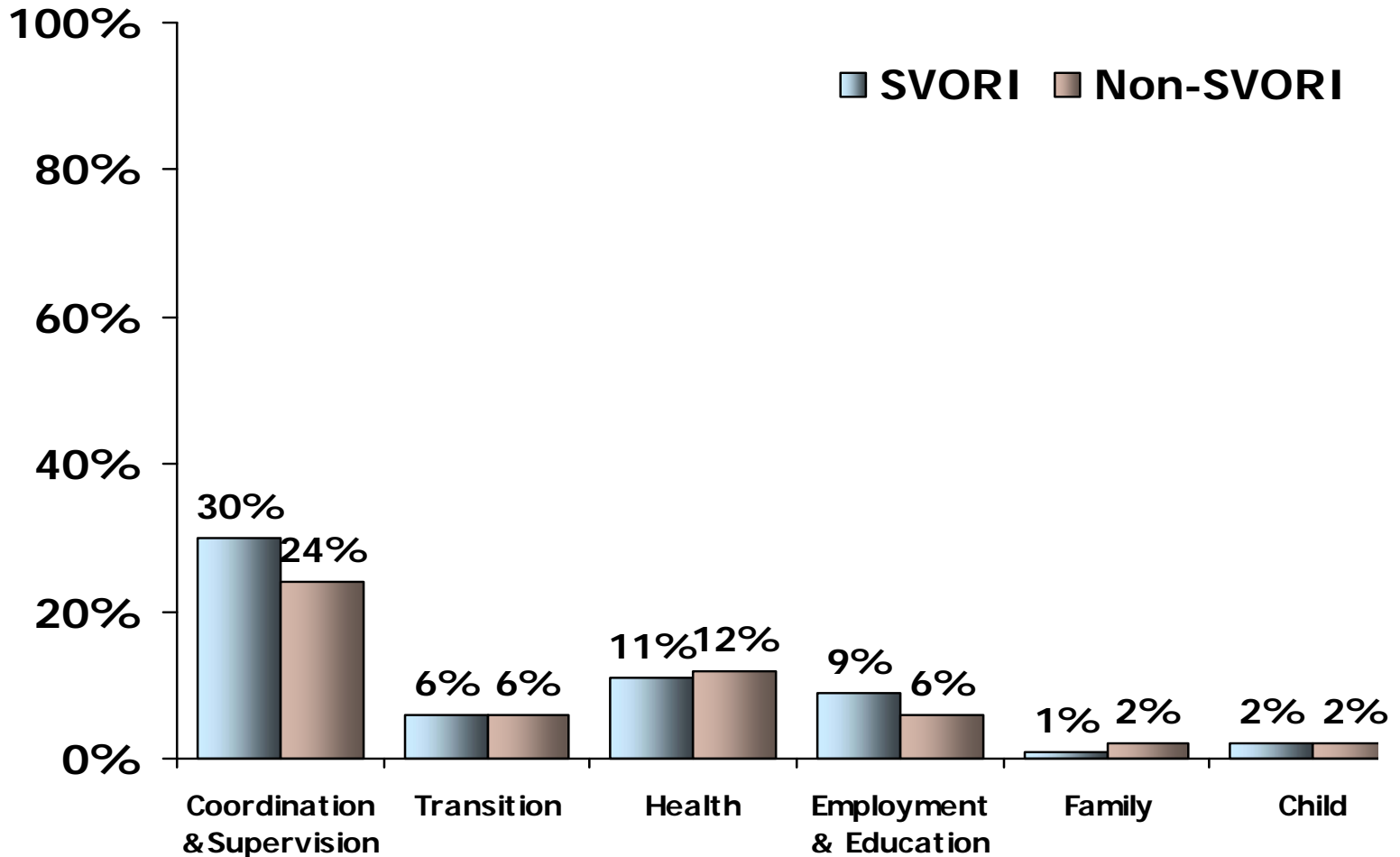


Service Receipt (9 months post release)





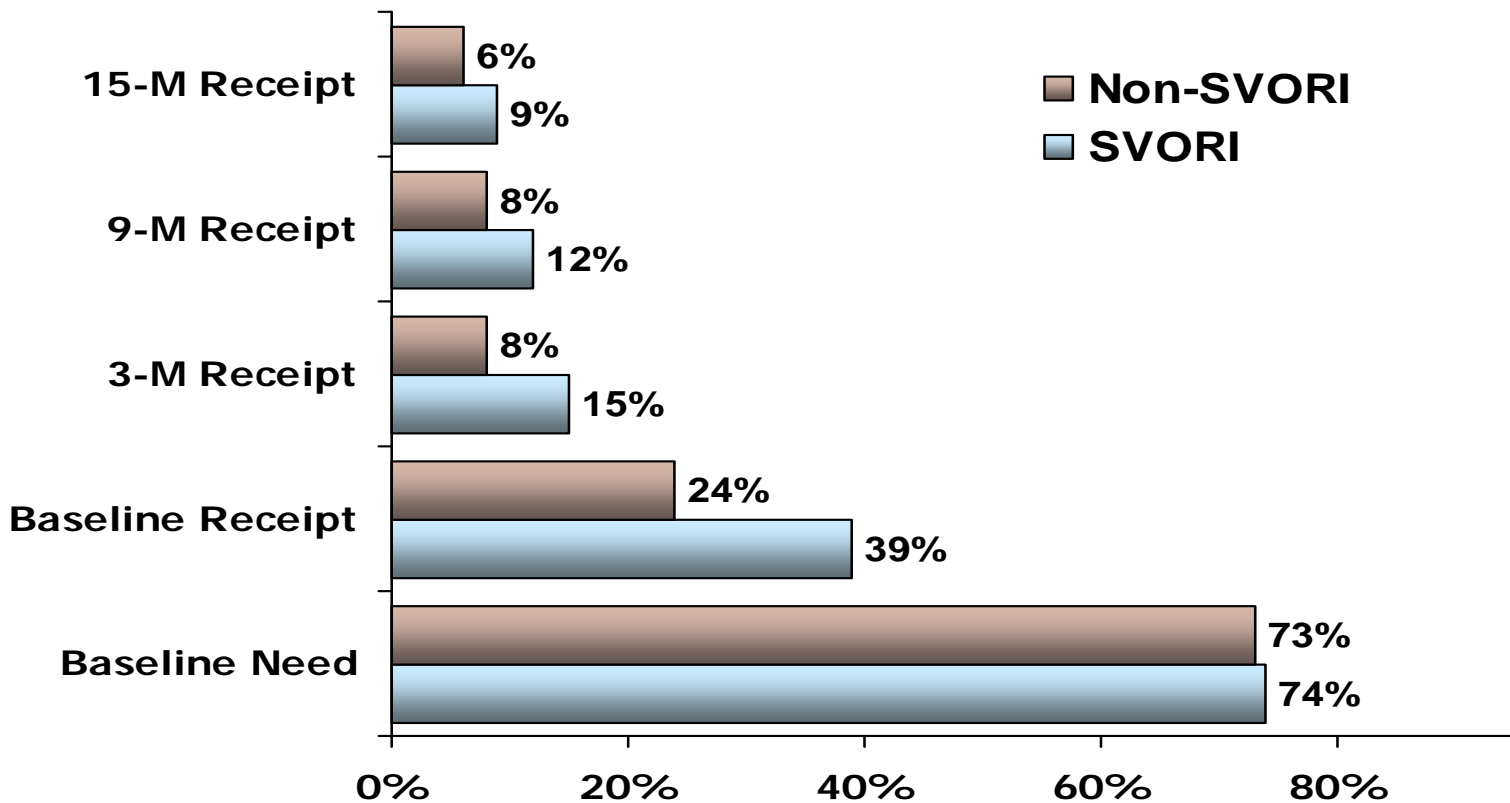
Service Receipt (15 months post release)



Service Receipt

Serious and
Violent
Offender Multi-
site Evaluation

Employment/Education/Skills Building Services





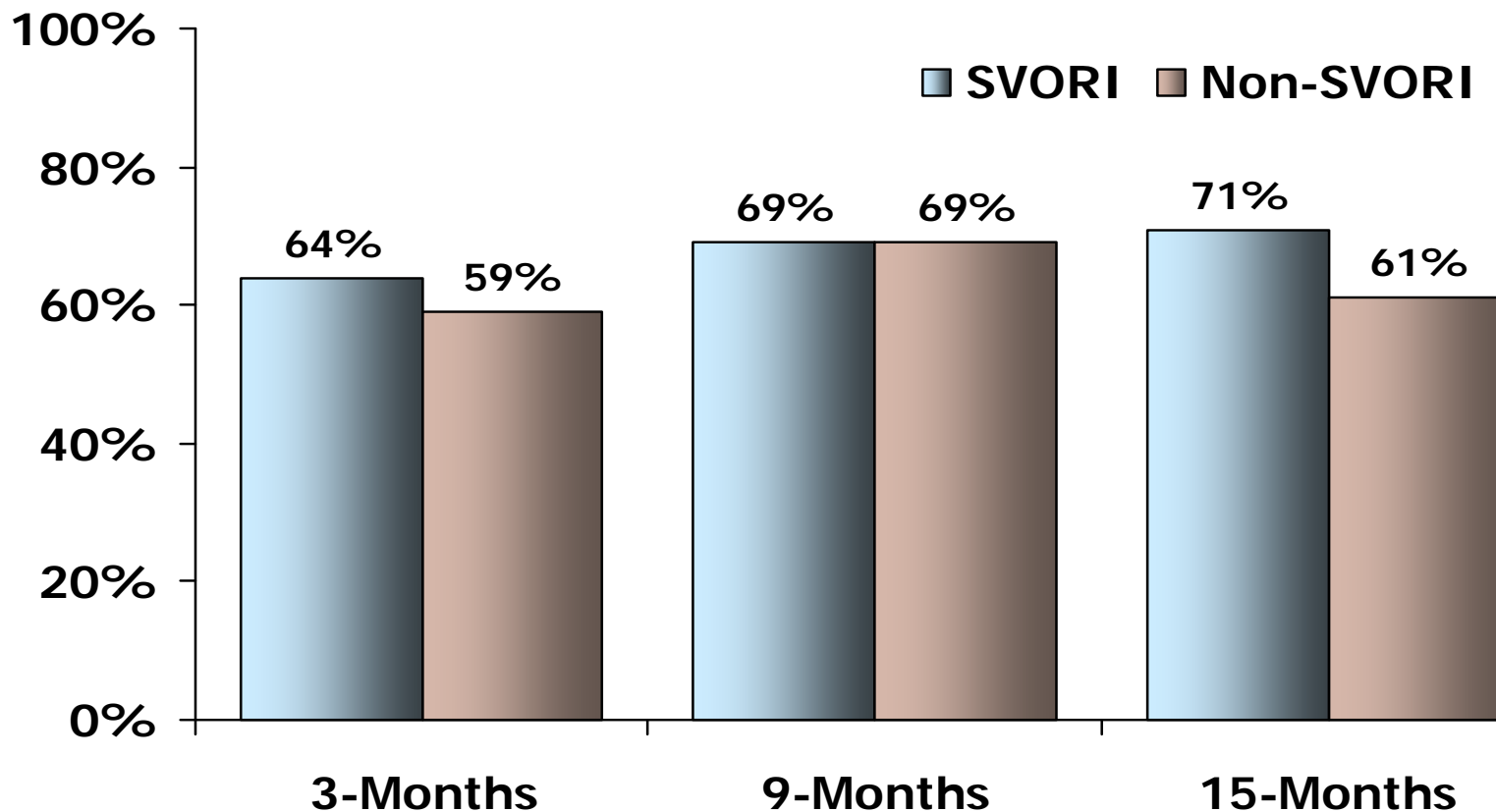
Important Findings on Service Needs and Receipt

- **Needs were highest for employment, education, and skills building services, followed by transition services and child services**
- **Needs were lowest for health-related services and family services**
- **Service receipt much lower than needs**
- **Service receipt was highest before release then declined substantially over time**

Reentry Experiences Among the Sample

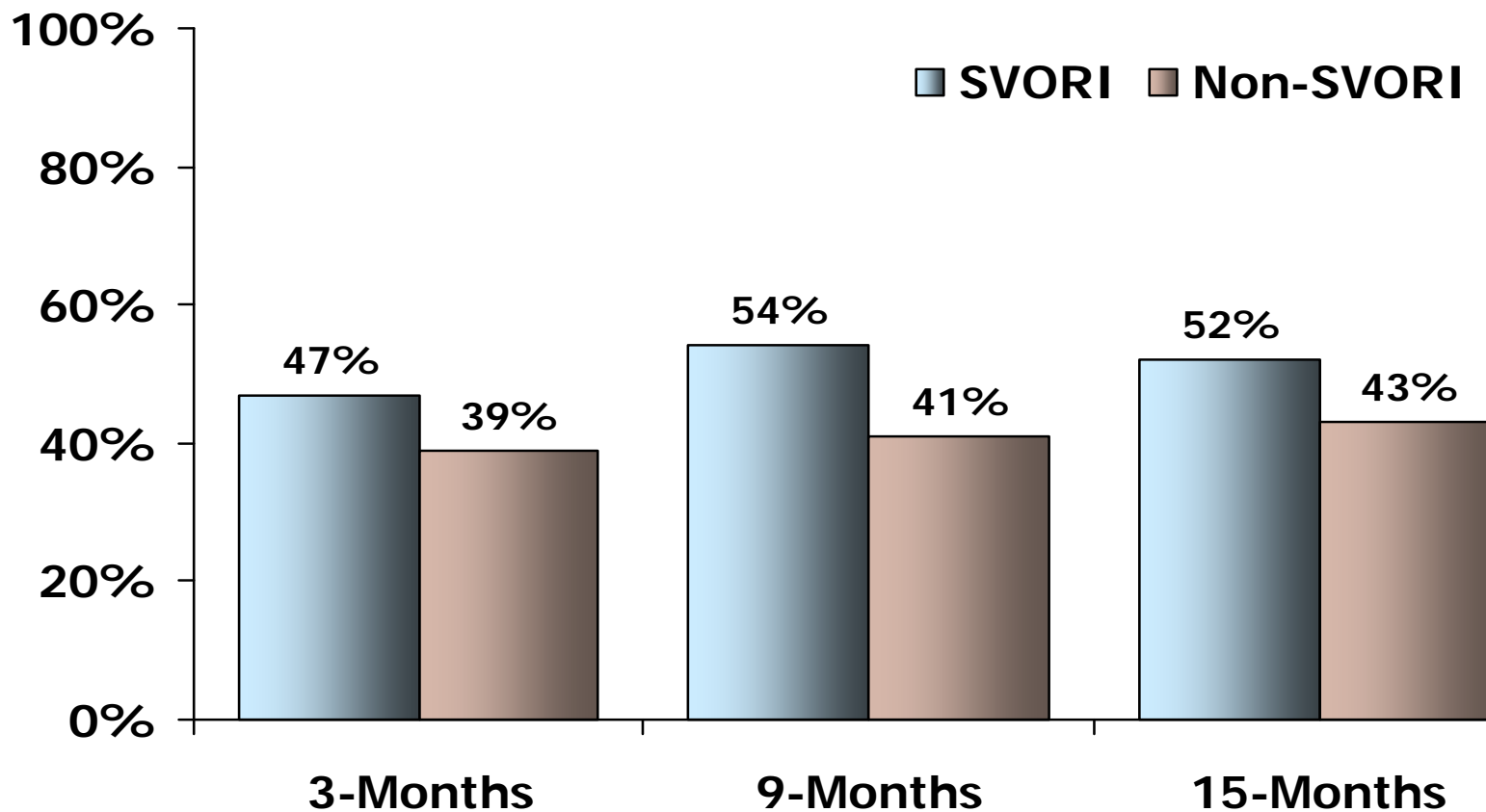
Serious and Violent Offender Multi-site Evaluation

Supports Self with a Job



Reentry Experiences Among the Sample

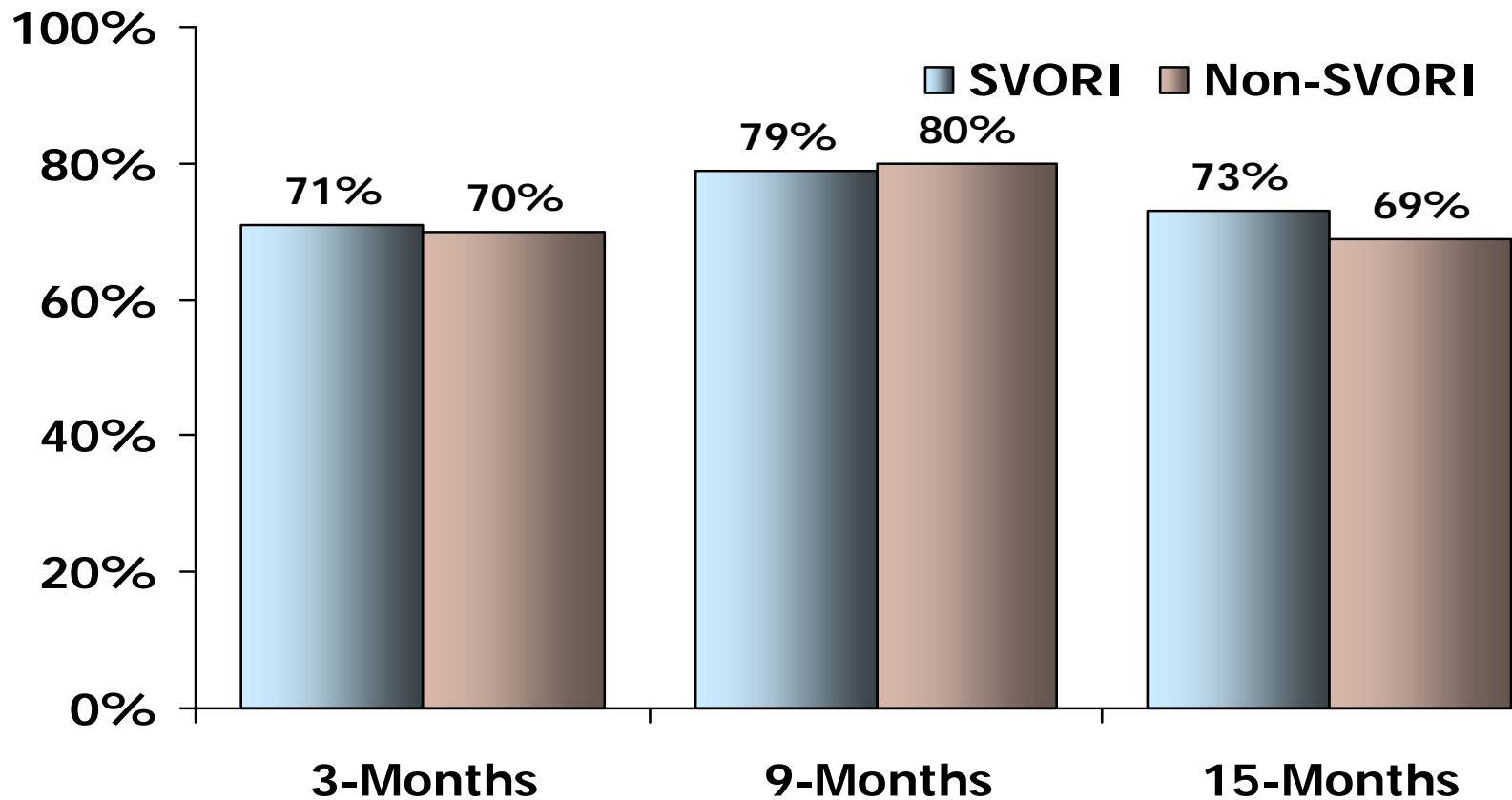
Job Has Benefits



Reentry Experiences Among the Sample

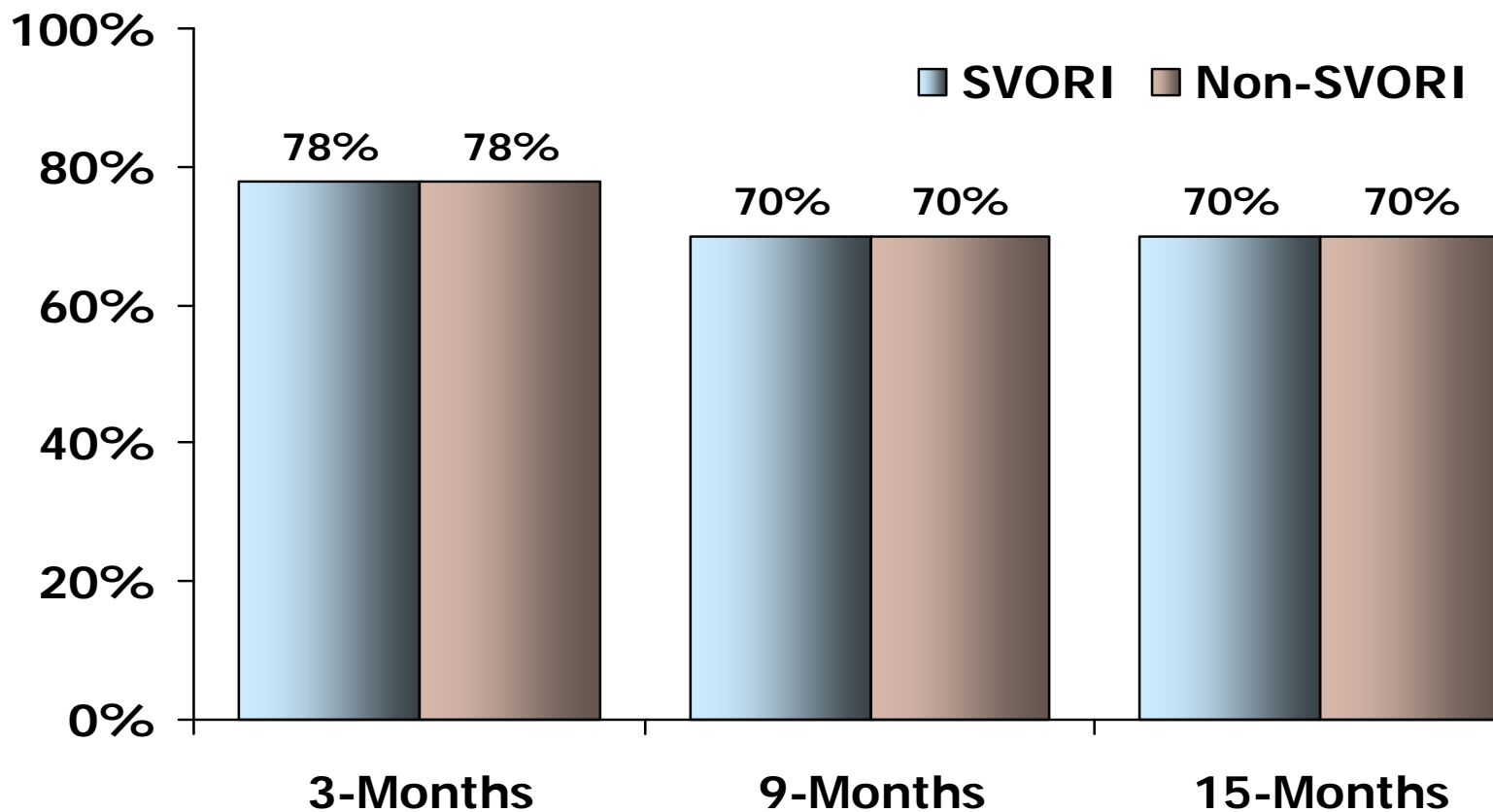
Serious and Violent Offender Multi-site Evaluation

Housing Independence



Reentry Experiences Among the Sample

Housing Stability



Reentry Experiences Among the Sample

- Common factors related to desistance
 - Committed not to go back to prison
 - Supportive family
 - Stable place to live
 - Learned to deal with stress
 - Good job
 - Stopped using drugs
- Common factors related to recidivism
 - Use of alcohol/drugs
 - Friends
 - Not enough money
 - Probation/Parole Officer was not helpful
 - Too much pressure



Conclusions

- **SVORI: Ambitious effort to improve integrated, individually targeted services through DOC coordination of state & community agencies & organizations**
- **Within a year, most programs were able to increase the level of services provided to offenders pre and post release—but levels were still low, particularly post release**
- **From release up through 15 months post release, SVORI participants are doing better—if only moderately so—across a wide range of outcomes**



Serious and
Violent
Offender Multi-
site Evaluation

www.svori-evaluation.org



www.svori-evaluation.org