

# Employment and Felonious Arrests of Former Foster Care Youth

---

by  
D. F. Duncan, Hye-Chung Kum,  
UNC-CH School of Social Work  
Richard P Barth, and Mary T. Hodorowicz  
University of Maryland School of Social Work  
July 21, 2008

# Outcomes for Youth Aging Out of Foster Care

---

- ❑ This analysis is based on the experiences of 1,316 youth, age 16 or older, who were in foster care on December 31, 1998
- ❑ It explores their employment and earnings
- ❑ It also explores the rate at which they are charged with a felony



# Outcomes for Youth Aging Out of Foster Care

---

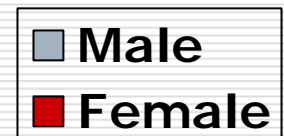
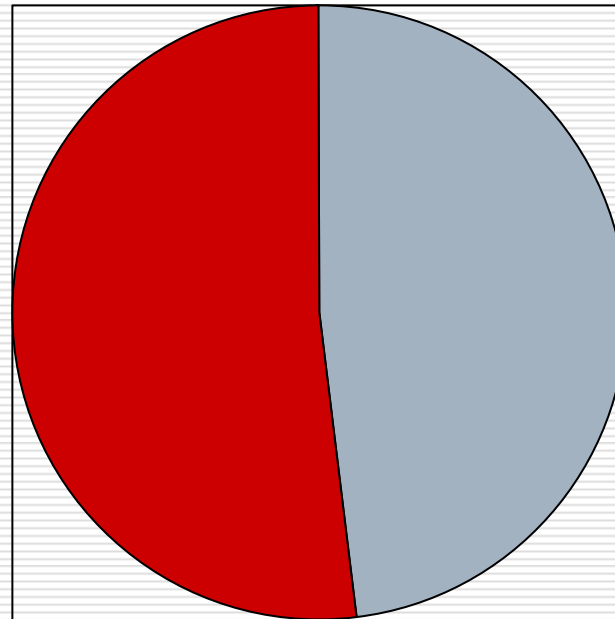
- The experiences of the foster care group are compared with those of 6,596 youth who were between 16 and 18 and whose families received Work First in December 1998
- The youth in the Work First group were coded as children



# Characteristics of the 1,316 Youth in Foster Care

---

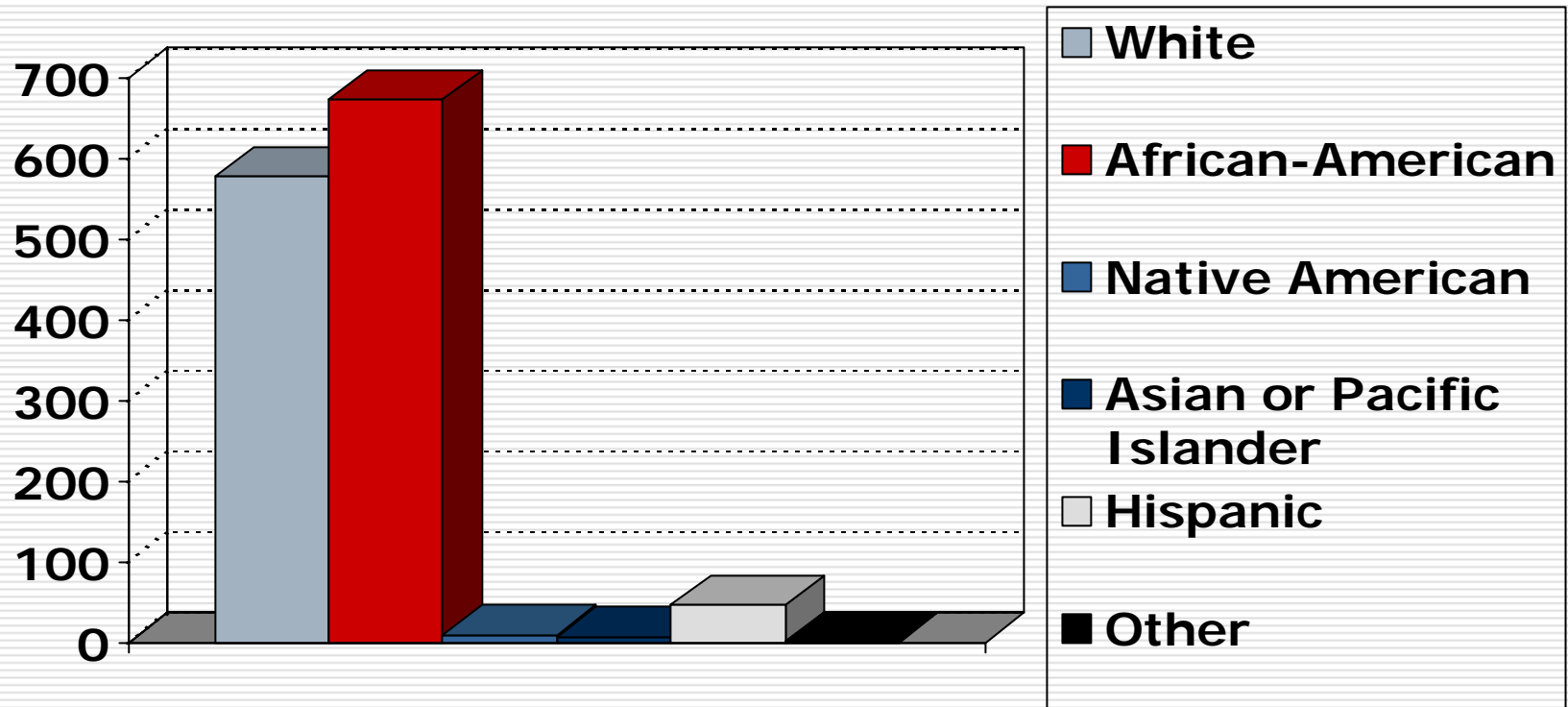
## Gender



# Characteristics of the 1,316 Youth in Foster Care

---

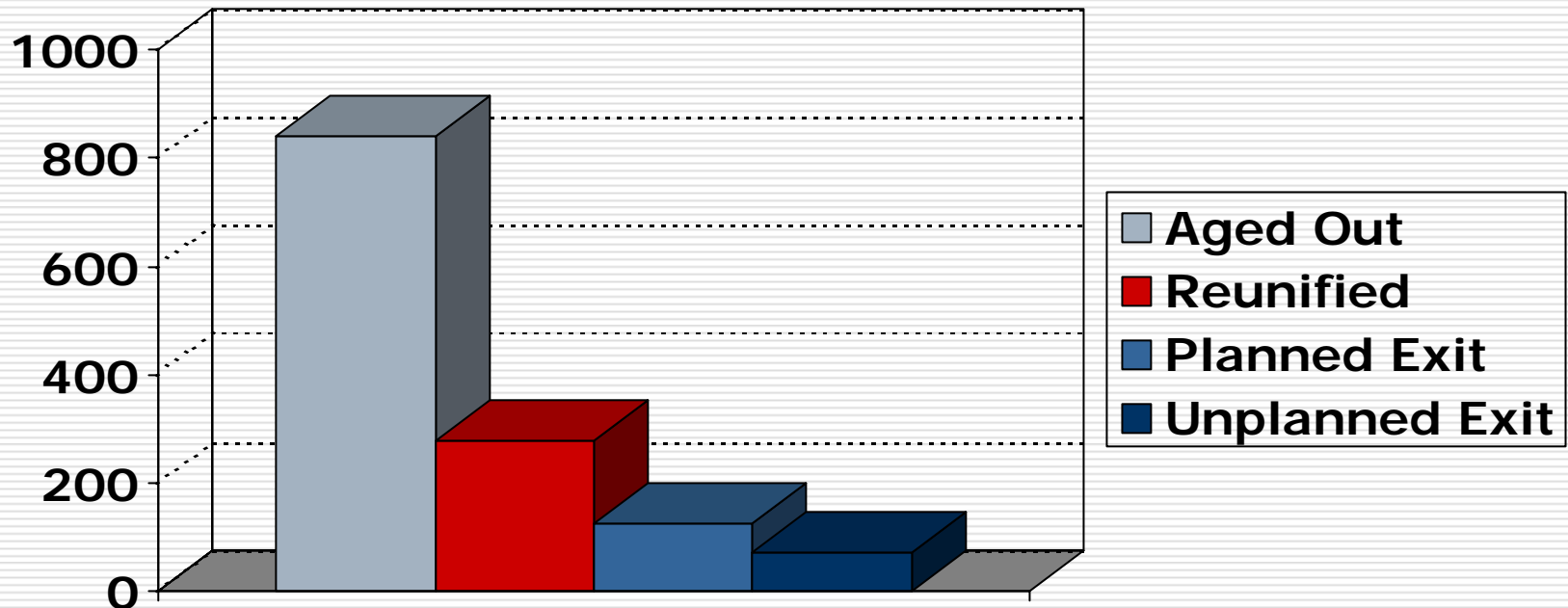
## Racial Classification



# Characteristics of the 1,316 Youth in Foster Care

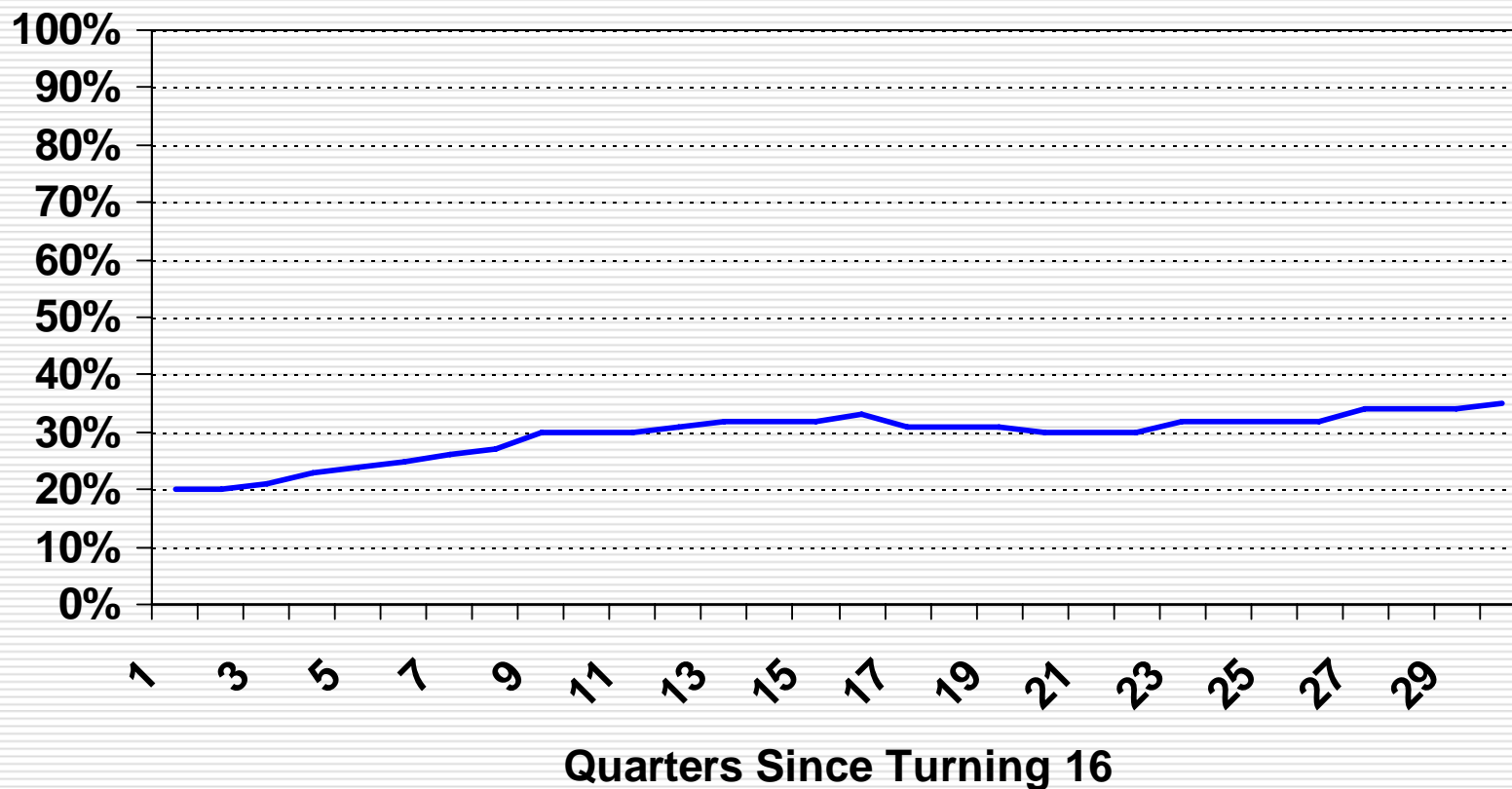
---

## Final Termination

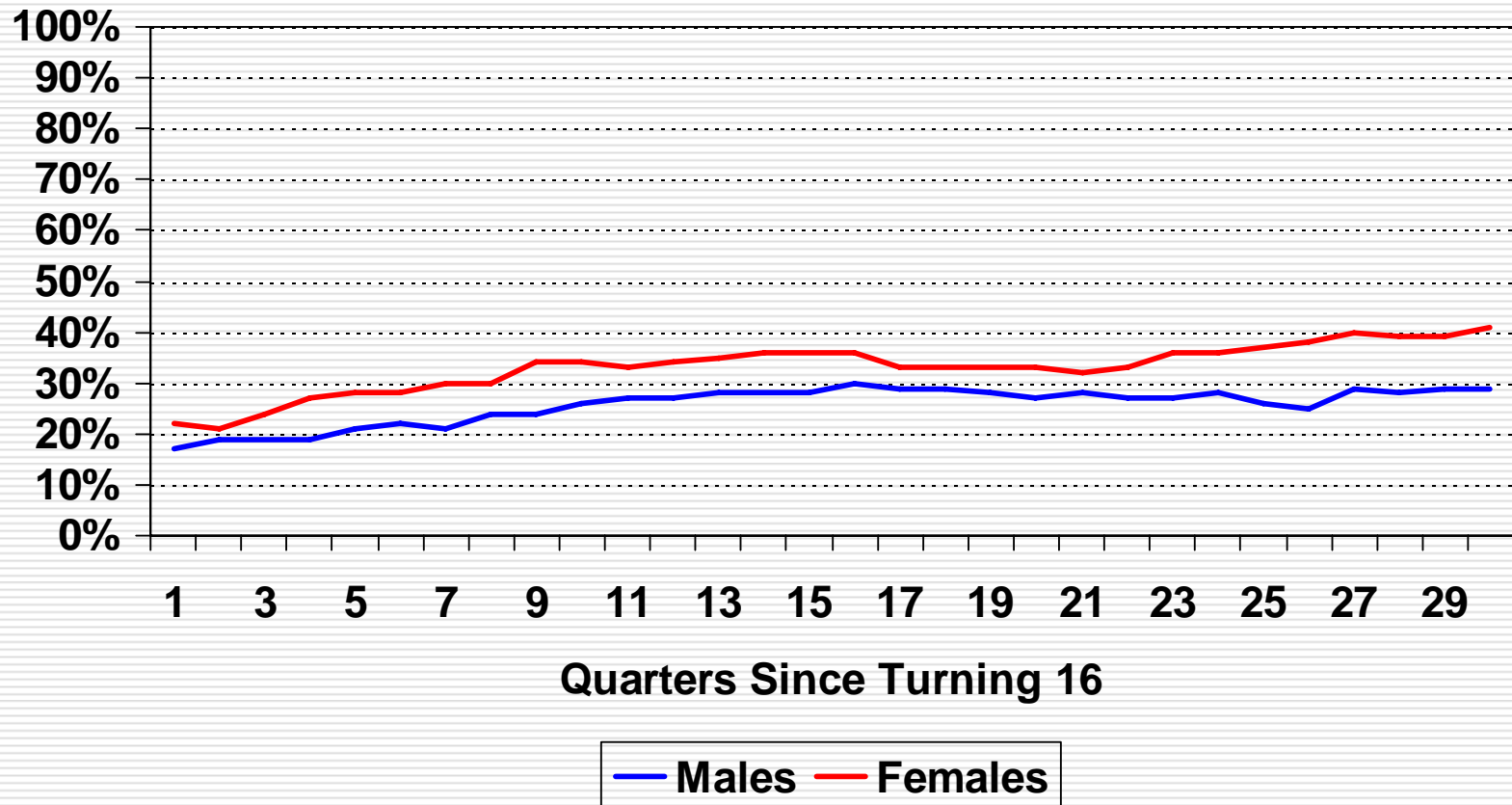


# Percentage Child Welfare Youth Employed

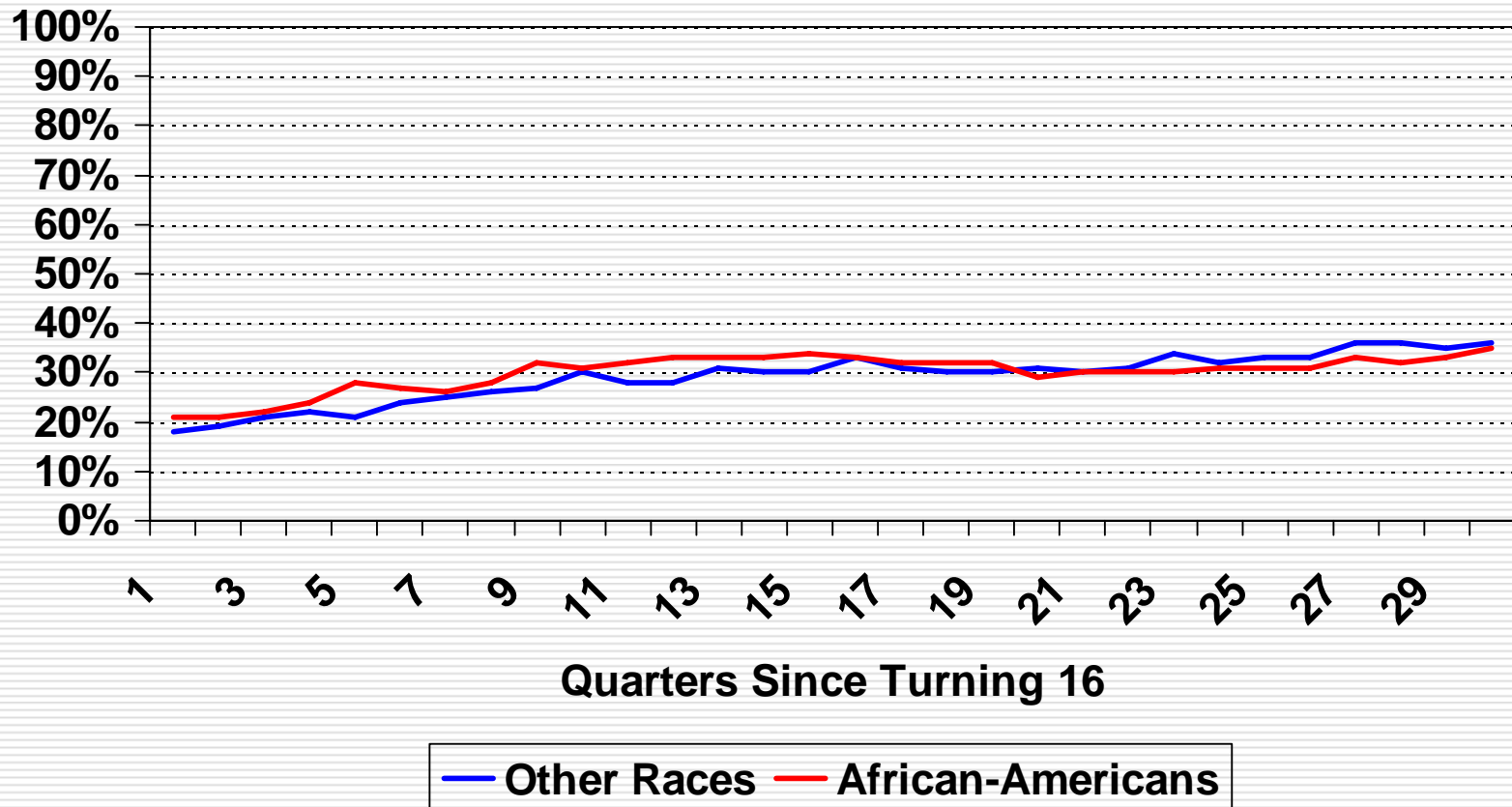
---



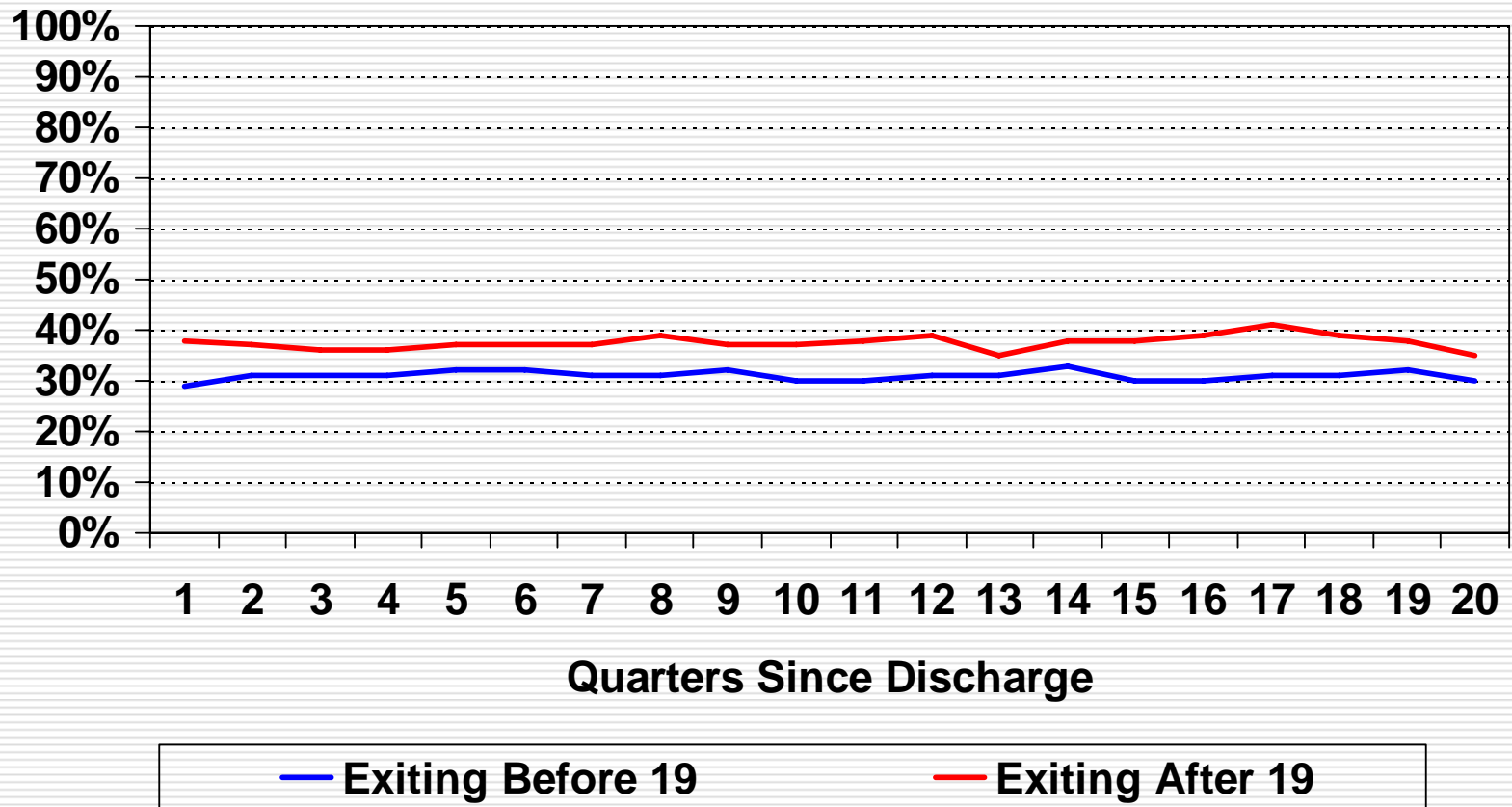
# Percentage Child Welfare Youth Employed by Gender



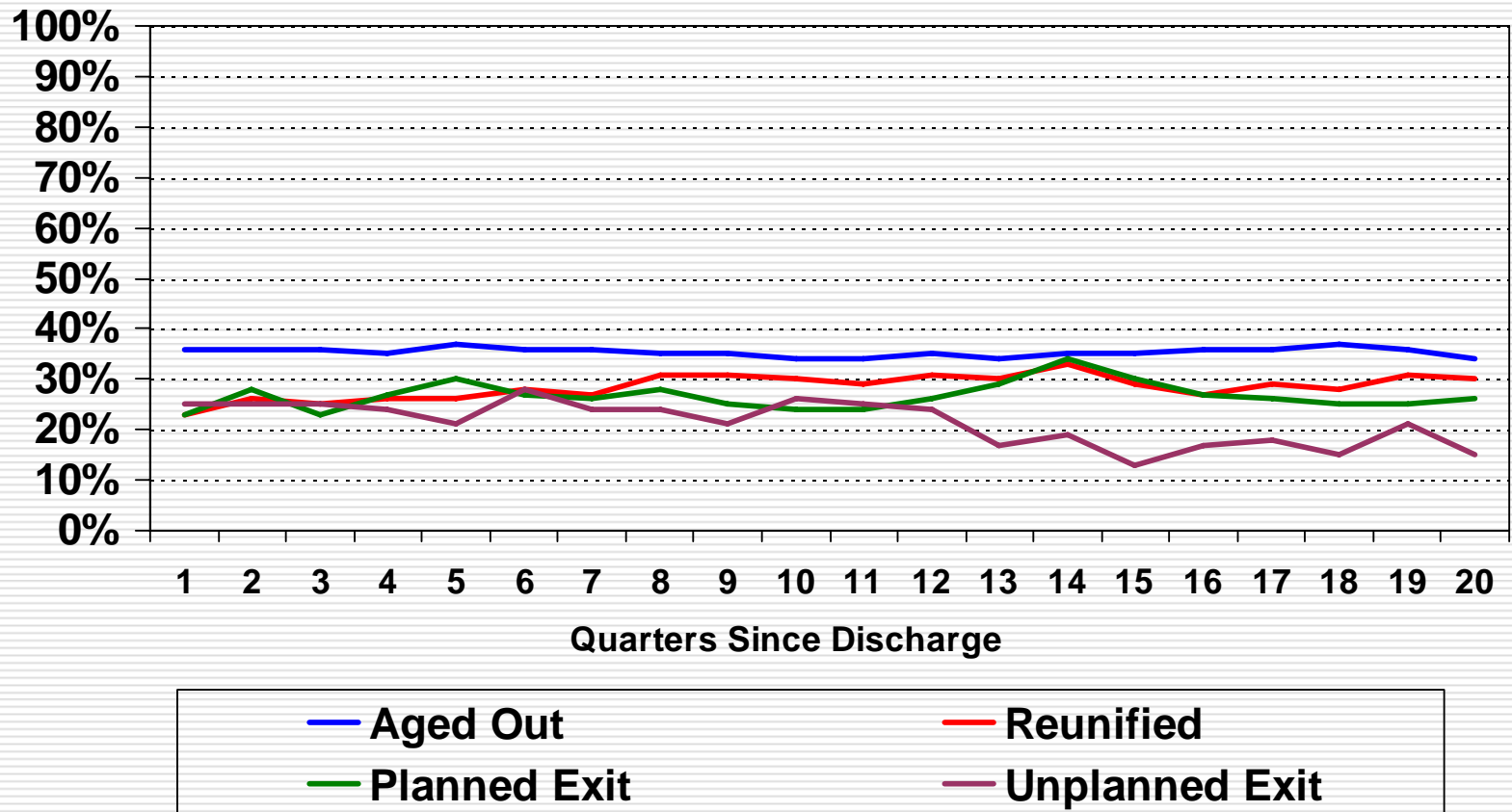
# Percentage Child Welfare Youth Employed by Race



# Percentage Child Welfare Youth Employed by Early Exit

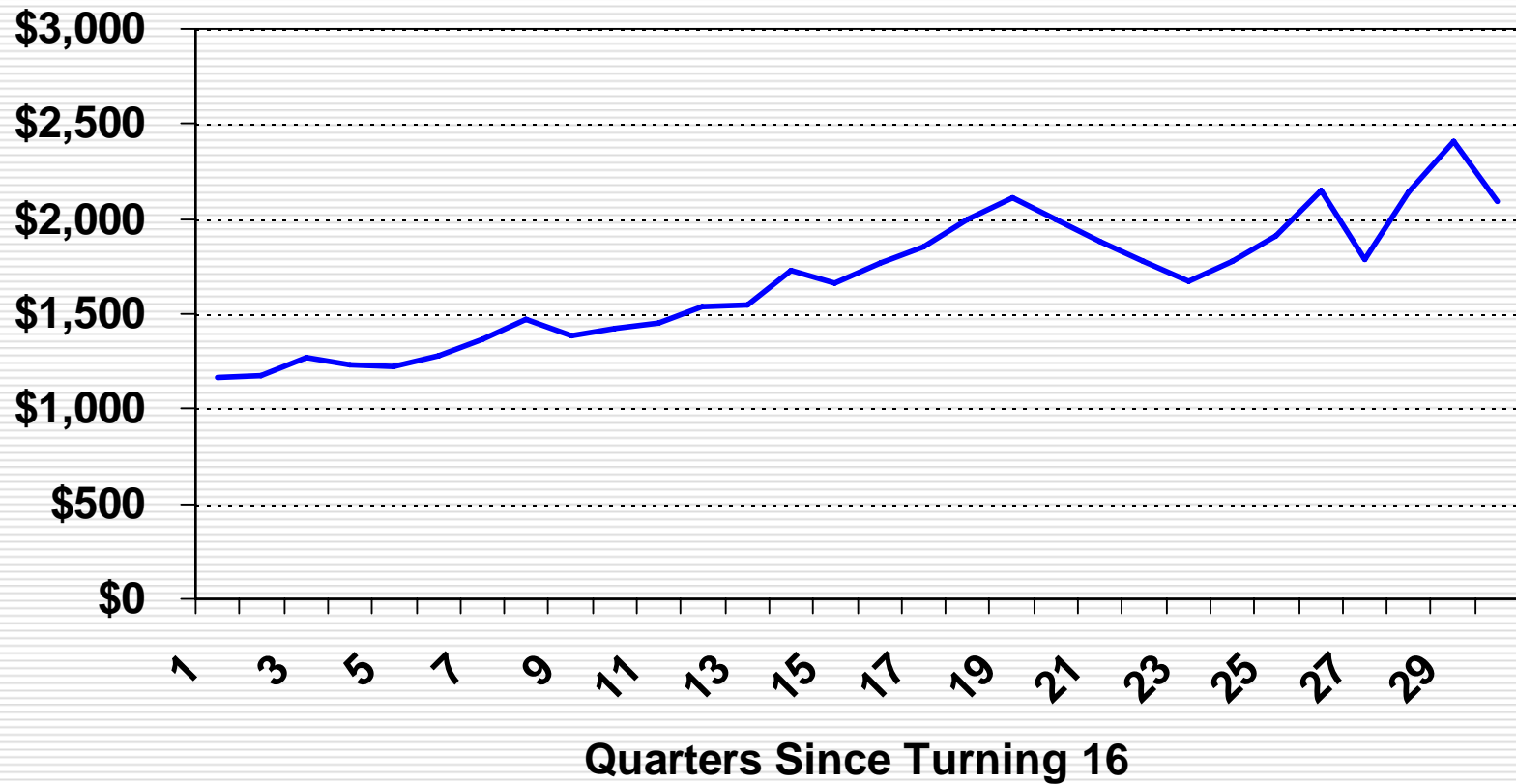


# Percentage Child Welfare Youth Employed by Type of Exit

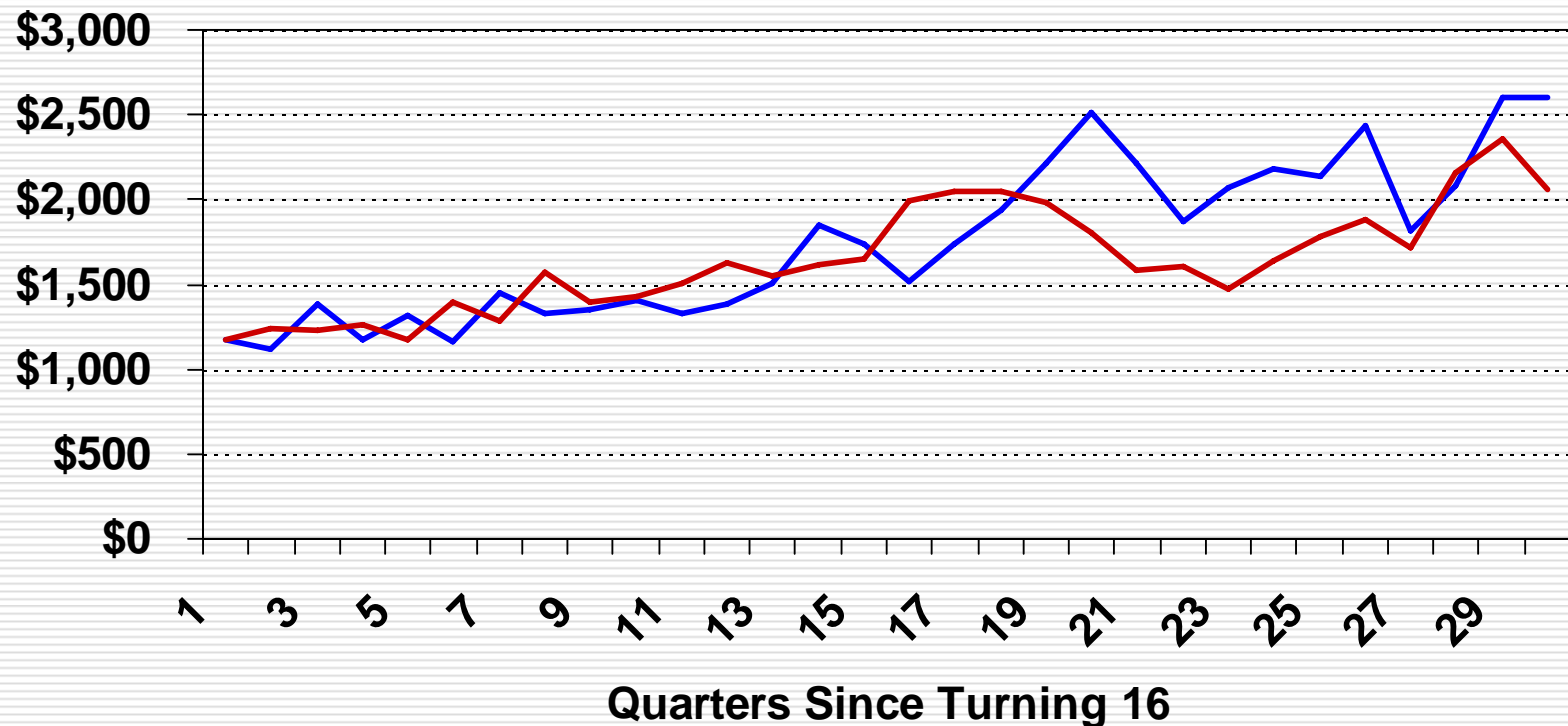


# Median Quarterly Earnings for Child Welfare Youth

---



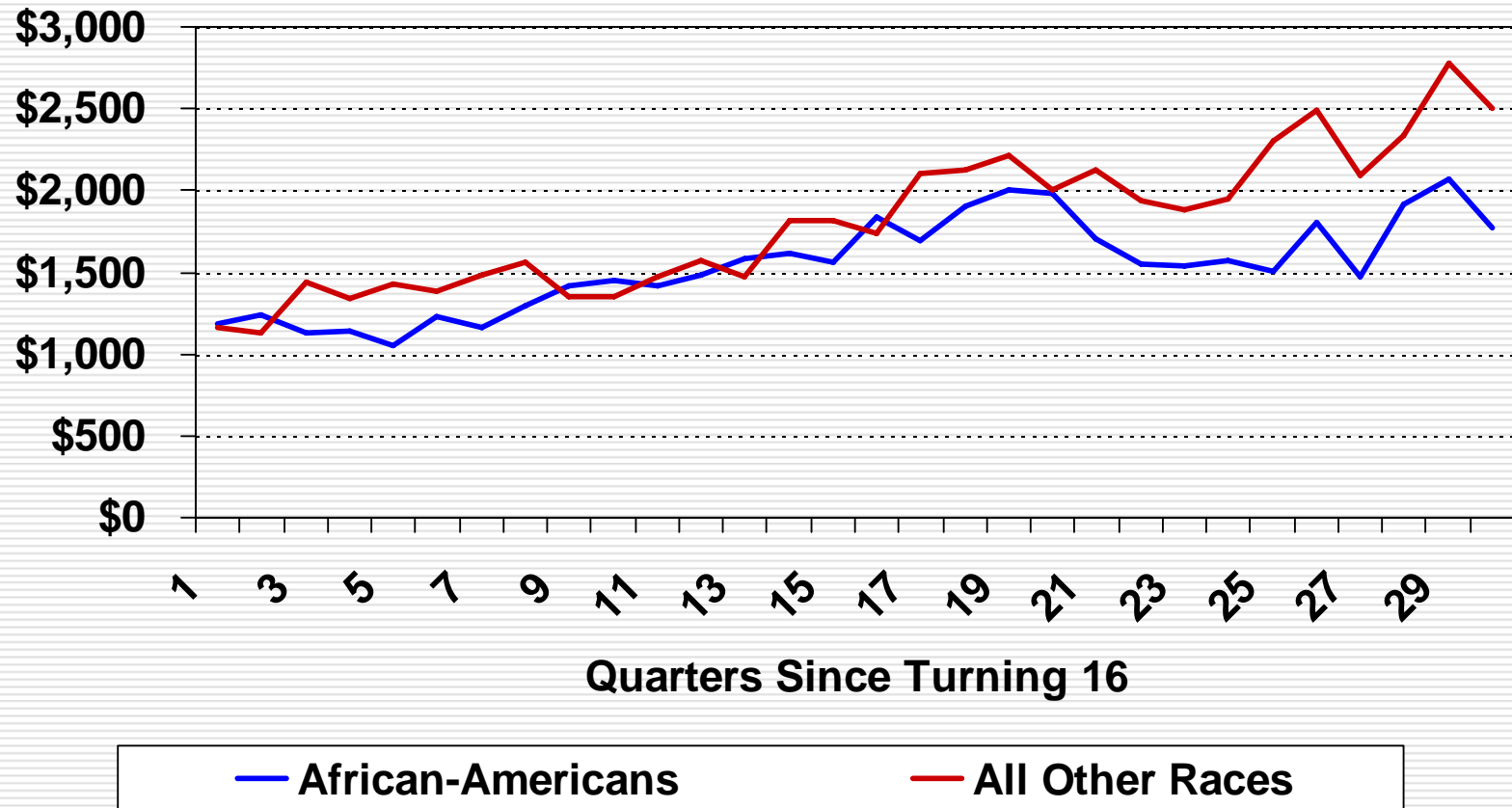
# Median Quarterly Earnings for Child Welfare Youth by Gender



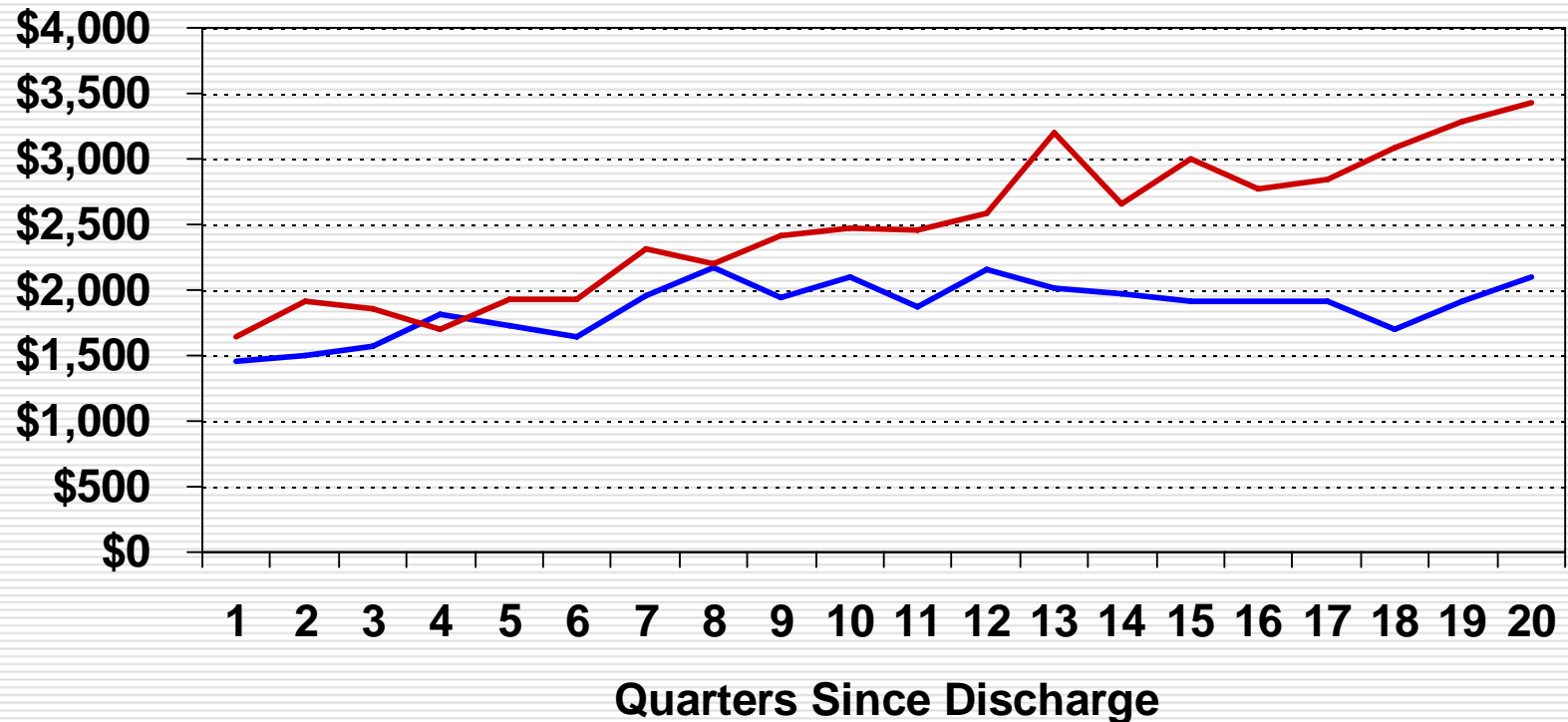
— Males — Females



# Median Quarterly Earnings for Child Welfare Youth by Race



# Median Quarterly Earnings for Child Welfare Youth by Early Exit

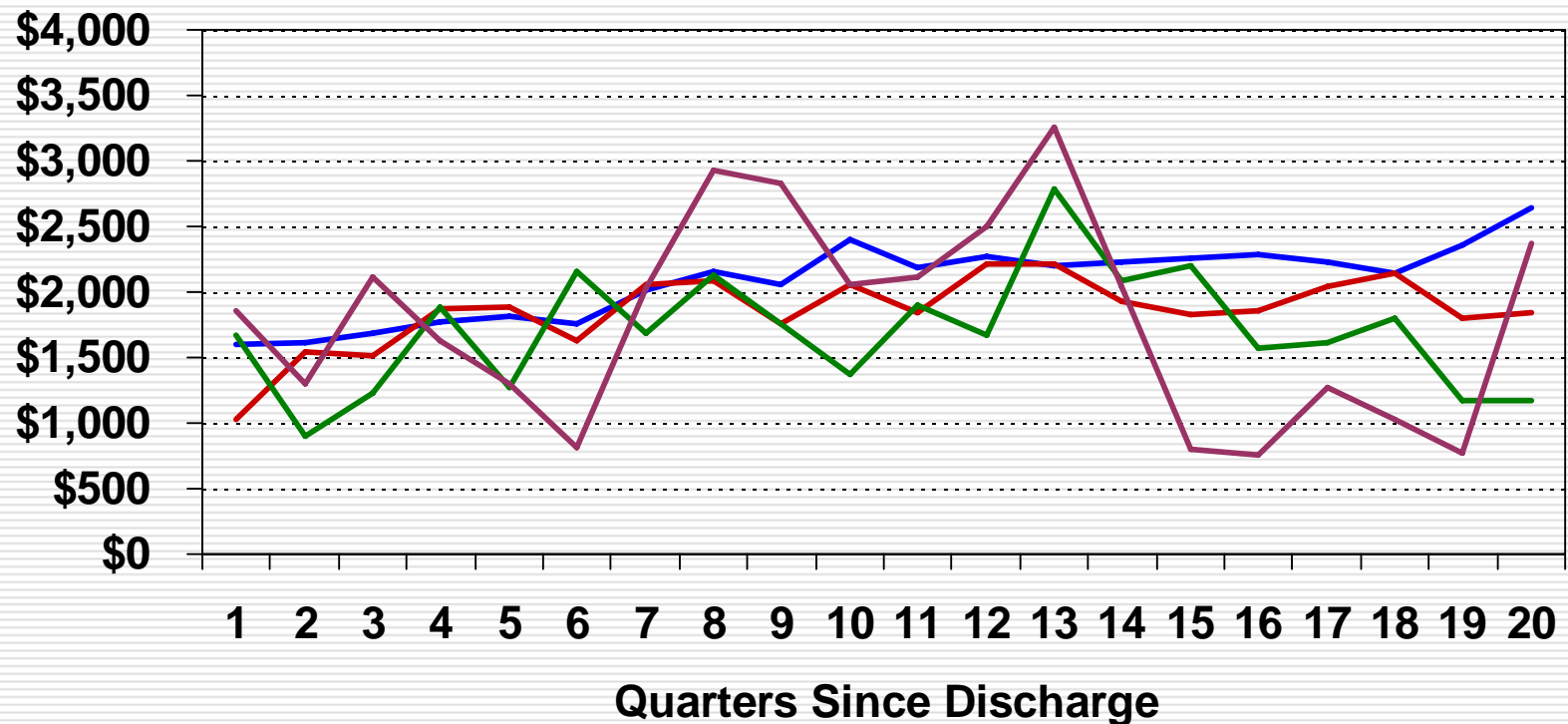


— Exited Before 19

— Exited After 19



# Median Quarterly Earnings for Child Welfare Youth by Type of Exit



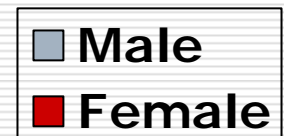
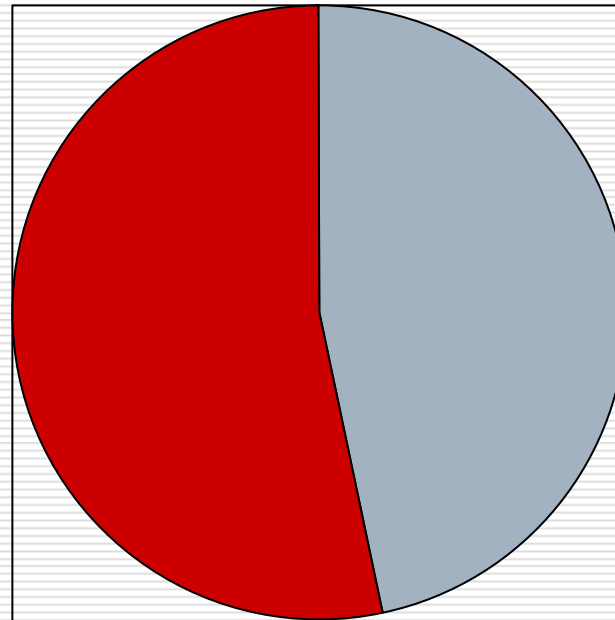
— Aged Out — Reunified — Planned Exit — Unplanned Exit



# Characteristics of the 6,596 Youth From Work First Families

---

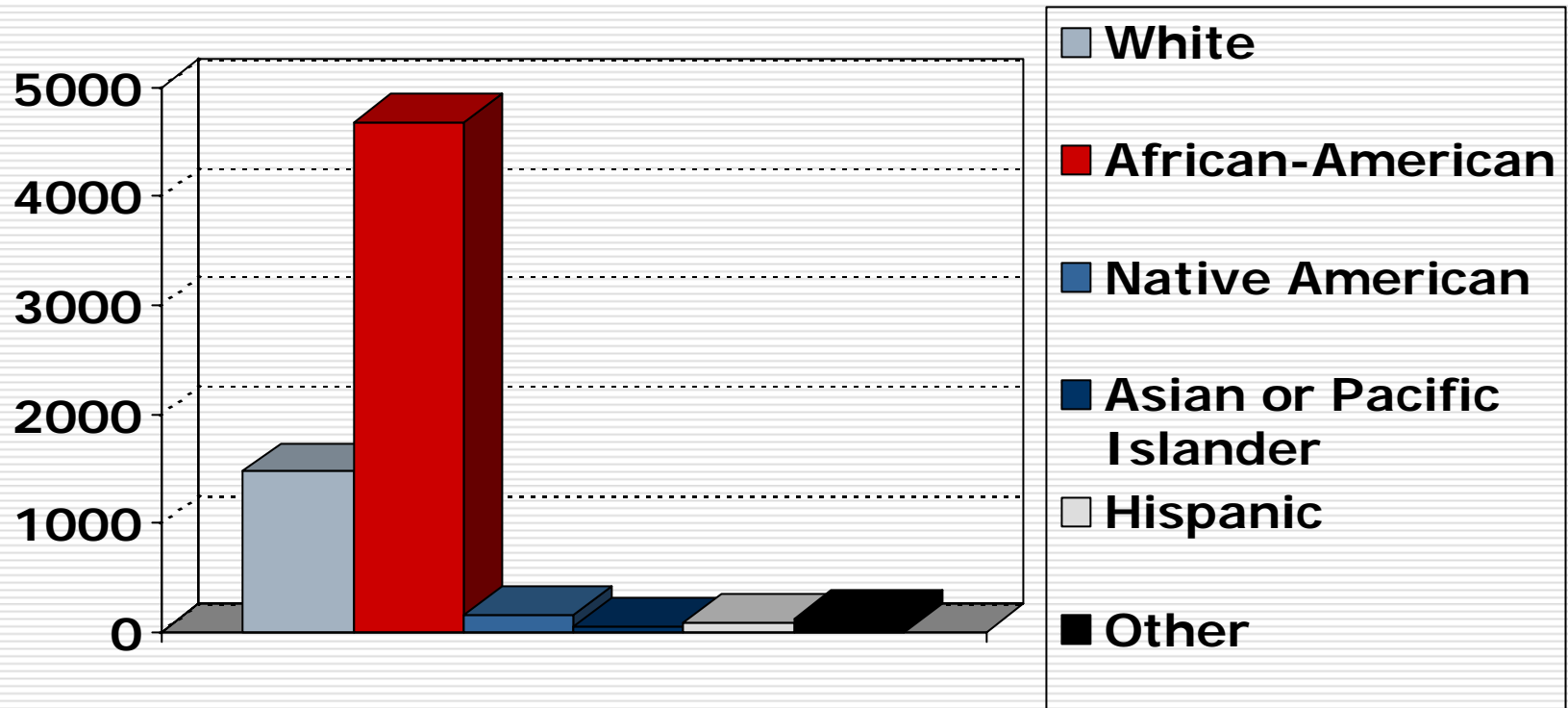
## Gender



# Characteristics of the 6,596 Youth From Work First Families

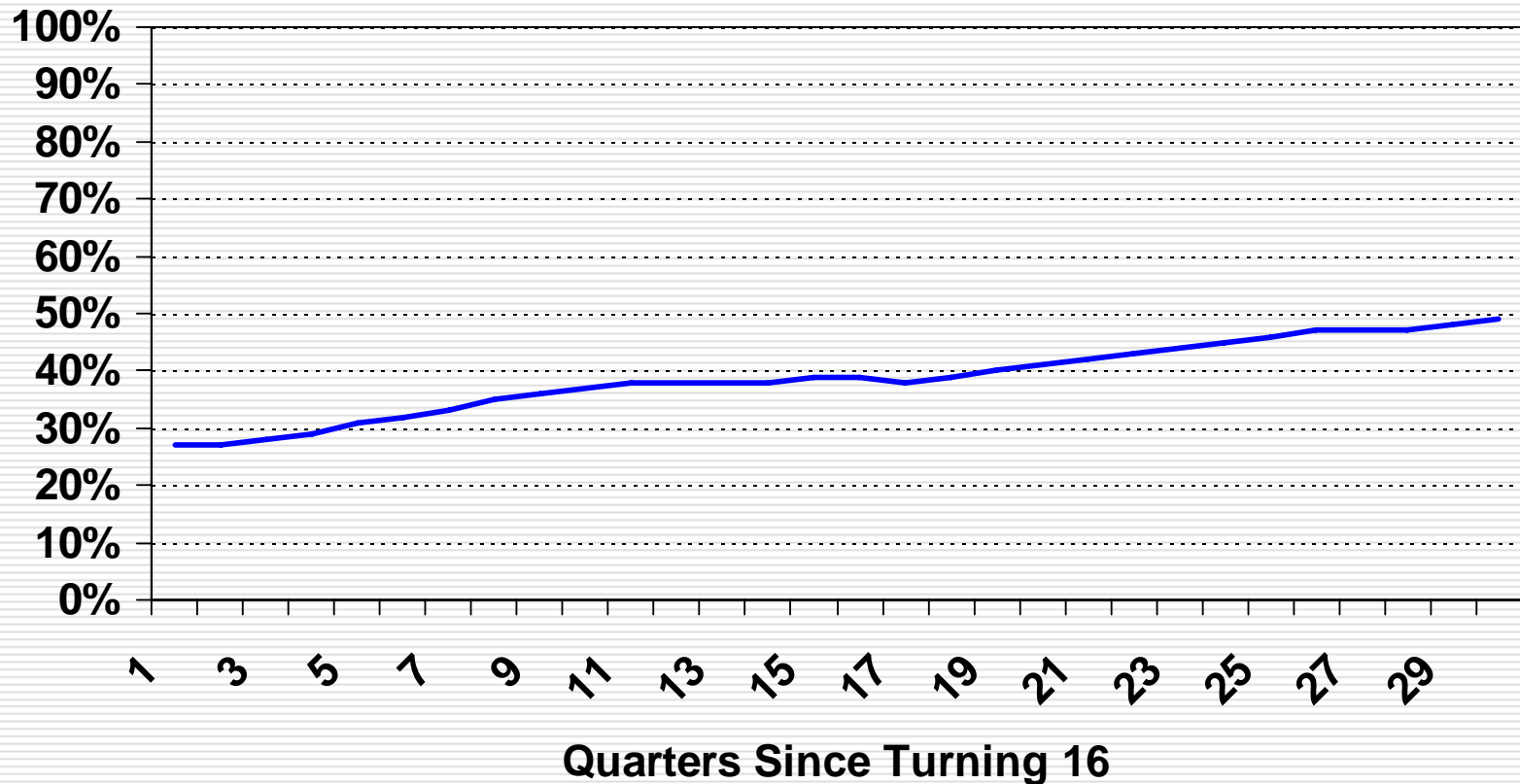
---

## Racial Classification

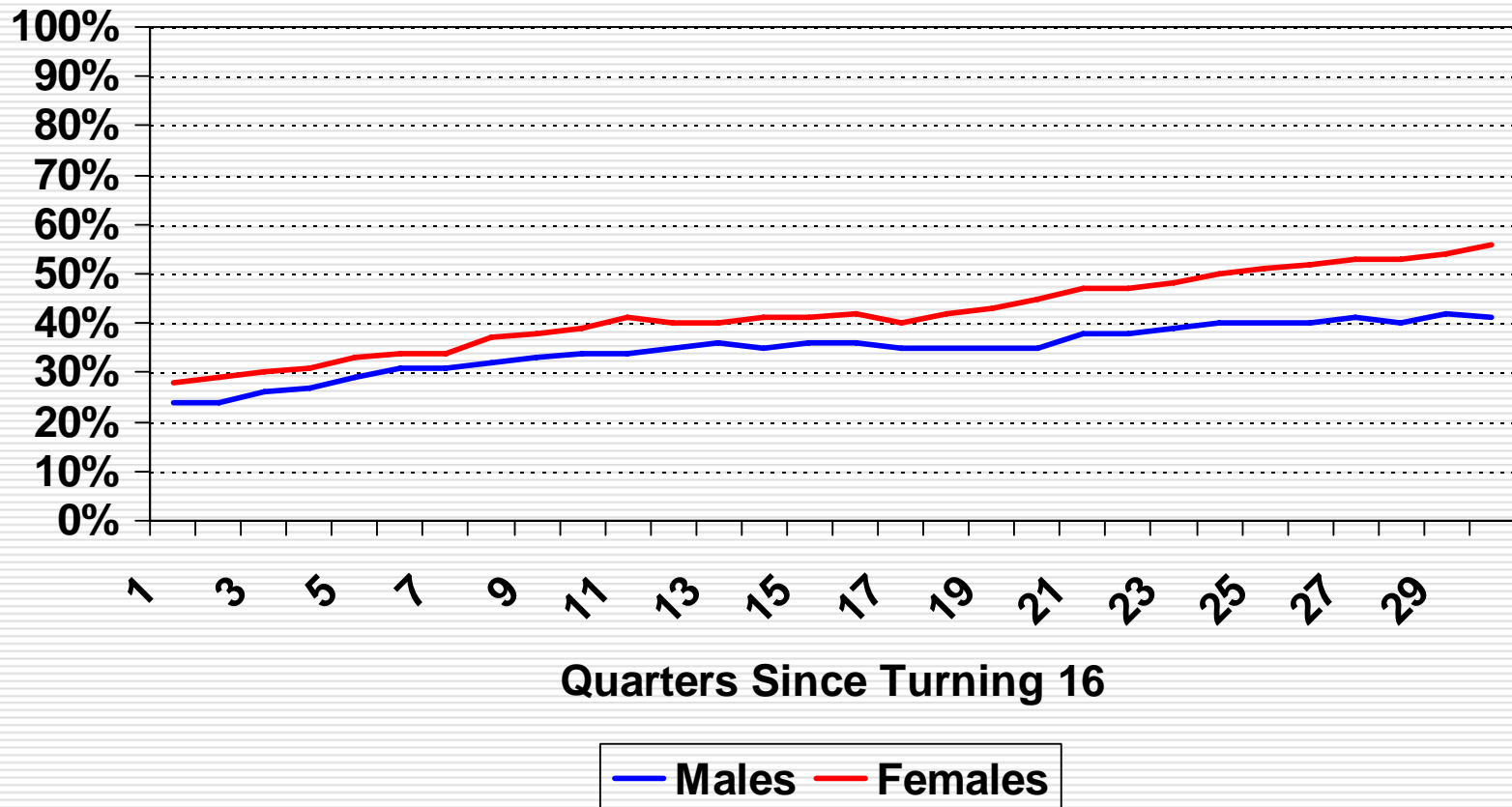


# Percentage Work First Youth Employed

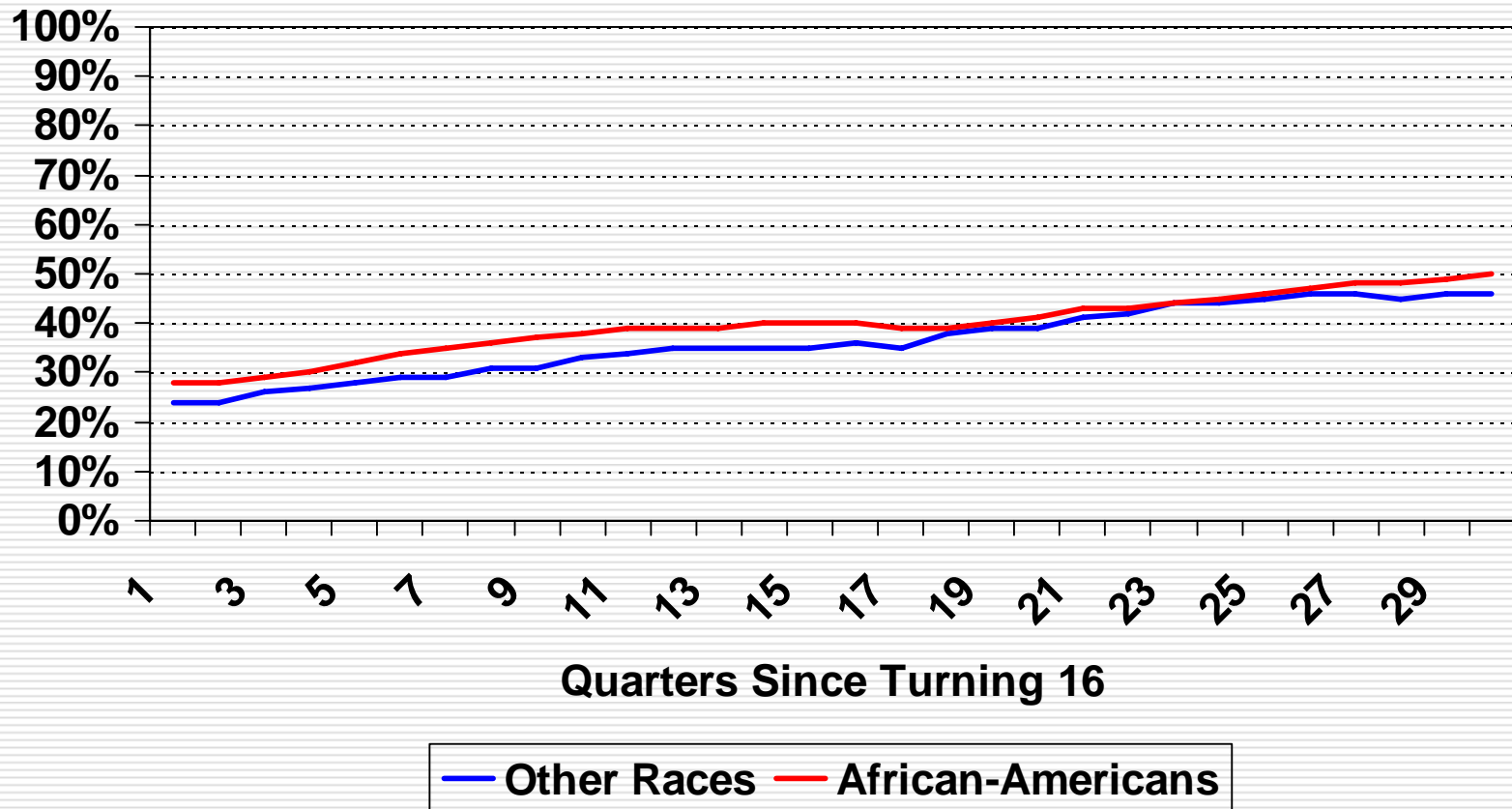
---



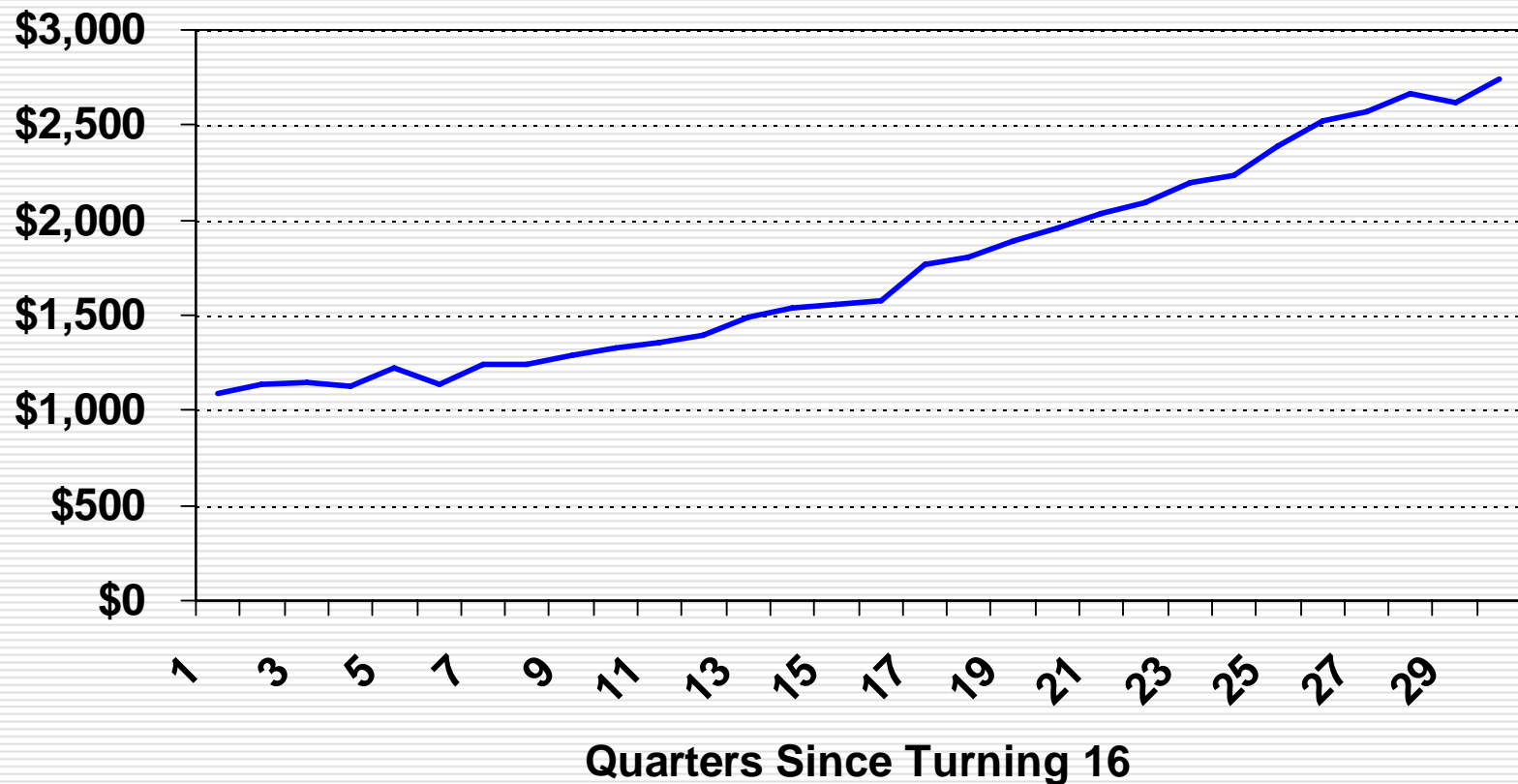
# Percentage Work First Youth Employed by Gender



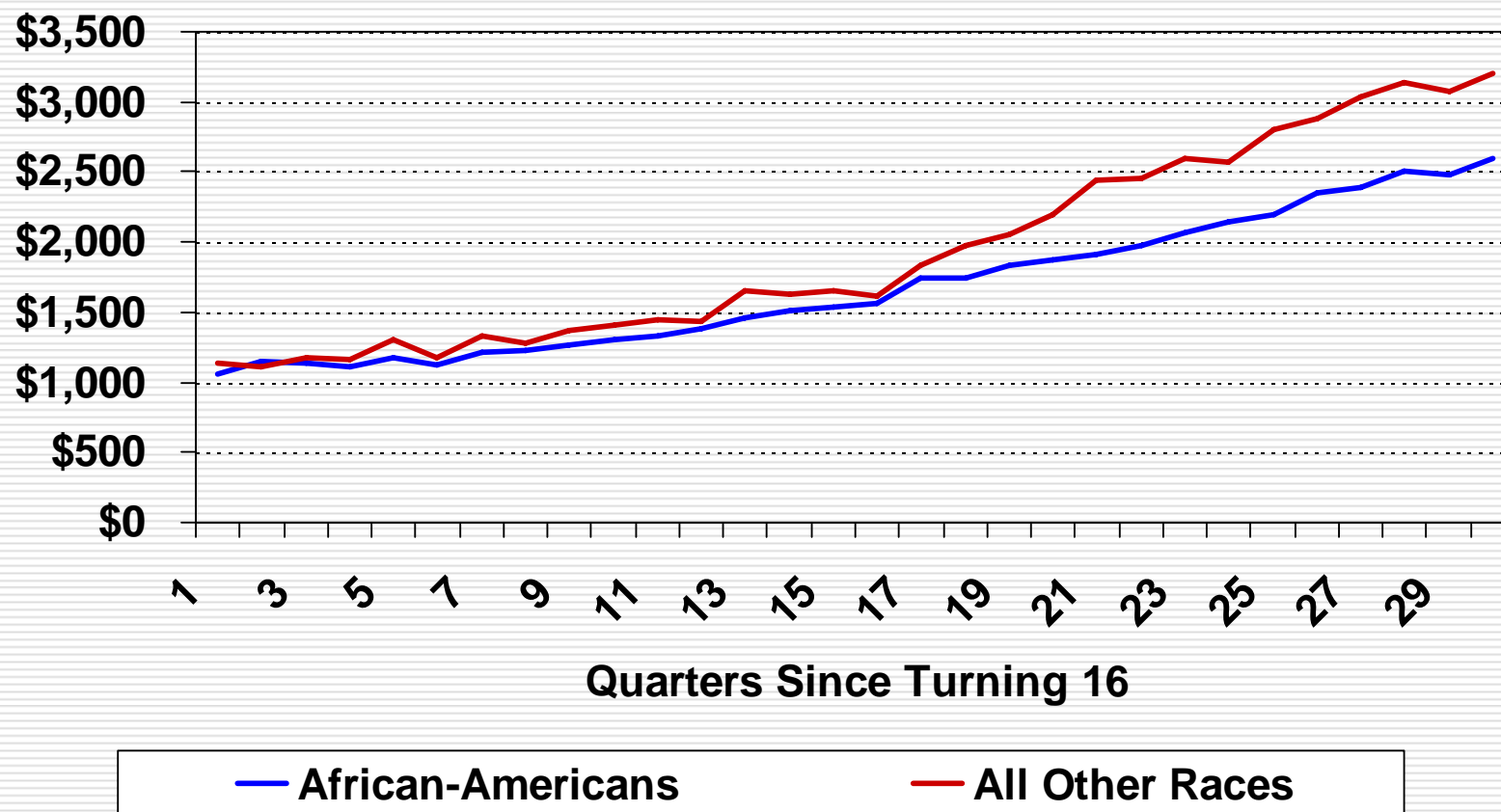
# Percentage Work First Youth Employed by Race



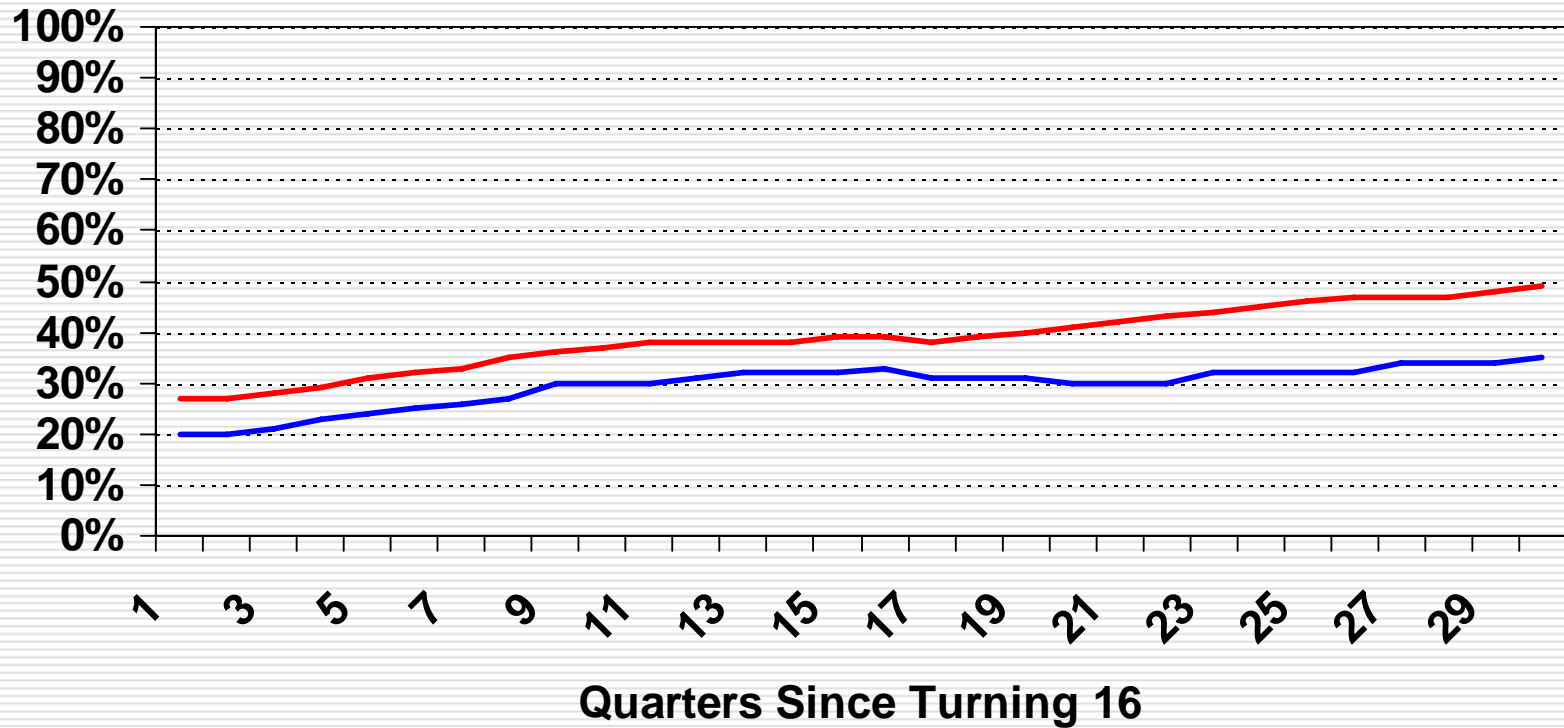
# Median Quarterly Earnings for Work First Youth



# Median Quarterly Earnings for Work First Youth by Race



# Percentage of Youth Employed

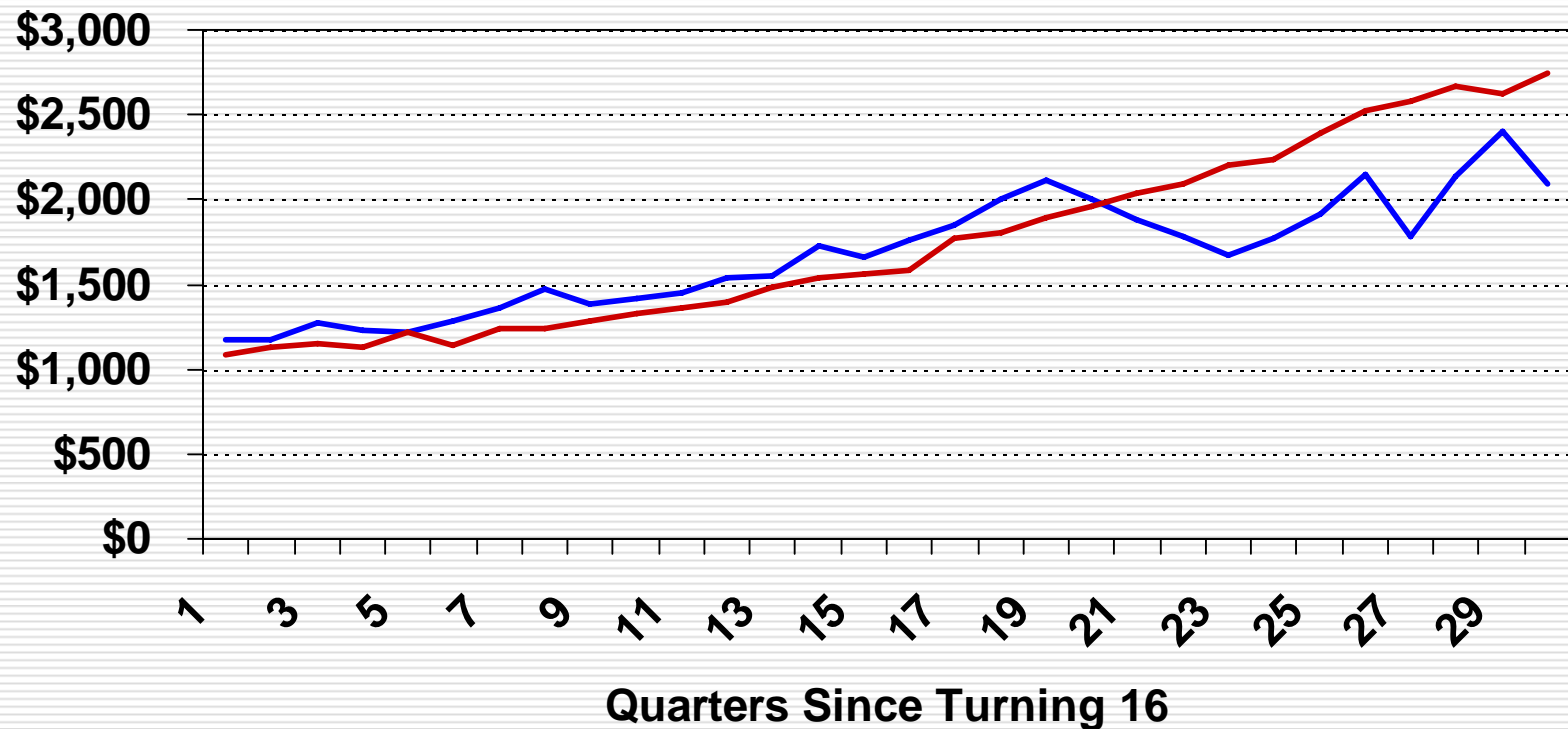


— Child Welfare

— Work First



# Median Quarterly Earnings for Child Welfare and Work First Youth



— Child Welfare

— Work First



# Employment Outcomes

---

- ❑ A lower percentage of former foster care youth were employed in any calendar quarter after turning 16 than youth whose families were on Work First
- ❑ Around age 23, the percentage of former Work First youth with jobs is about the same as for adults in the first quarter after leaving Work First



# Employment Outcomes

---

- ❑ Before age 20, the median earnings for males and females is about the same
- ❑ After age 20, males have higher earnings
- ❑ A similar pattern is found for race
- ❑ After age 20, African-American youth earn less than other youth



# Employment Outcomes

---

- ❑ A higher percentage of females than males have jobs
- ❑ A slightly higher percentage of former Work First African-American youth have jobs
- ❑ A slightly higher percentage of former foster care African-American youth have jobs through age 21



# Employment Outcomes

---

- ❑ The youth from child welfare who had jobs had slightly higher earnings through age 21 than the Work First youth
- ❑ After 21, the median earnings for the child welfare youth drop while the earnings for the Work First group continue to rise



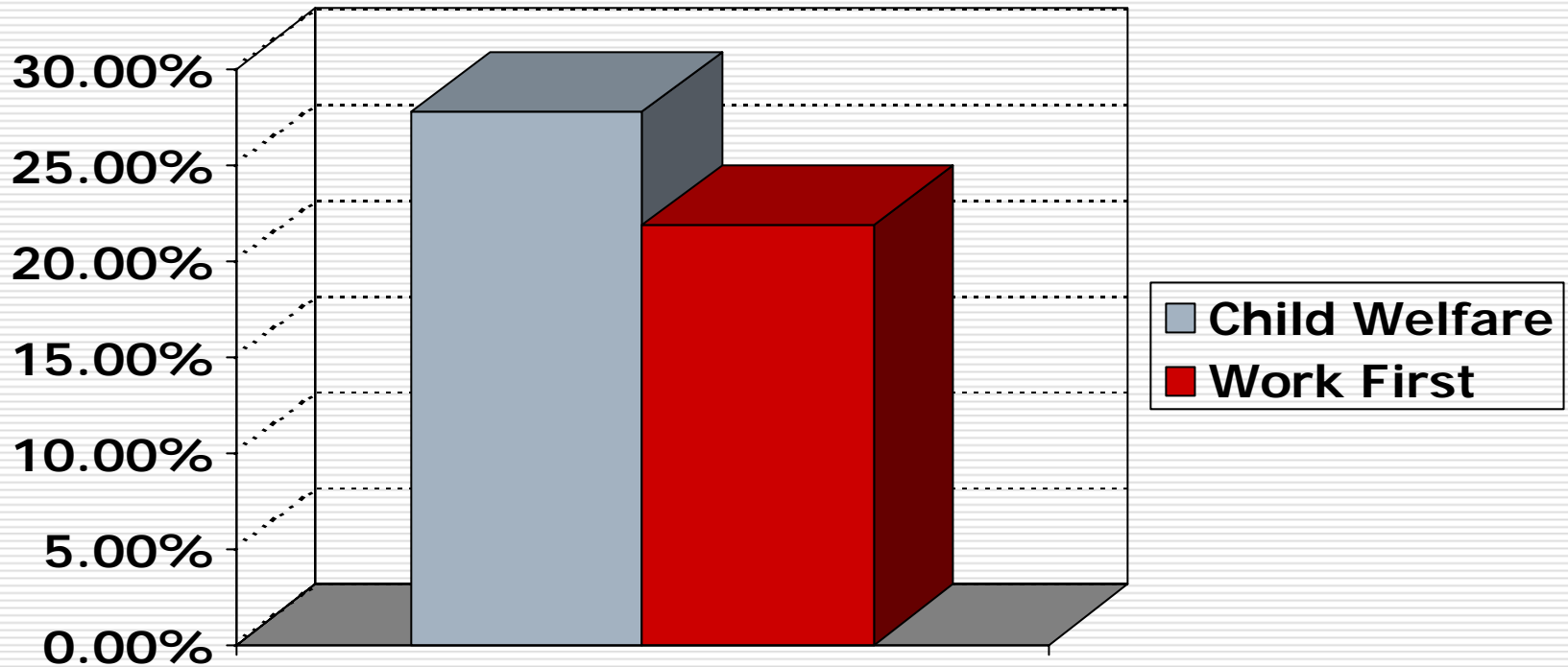
# Felonies

---



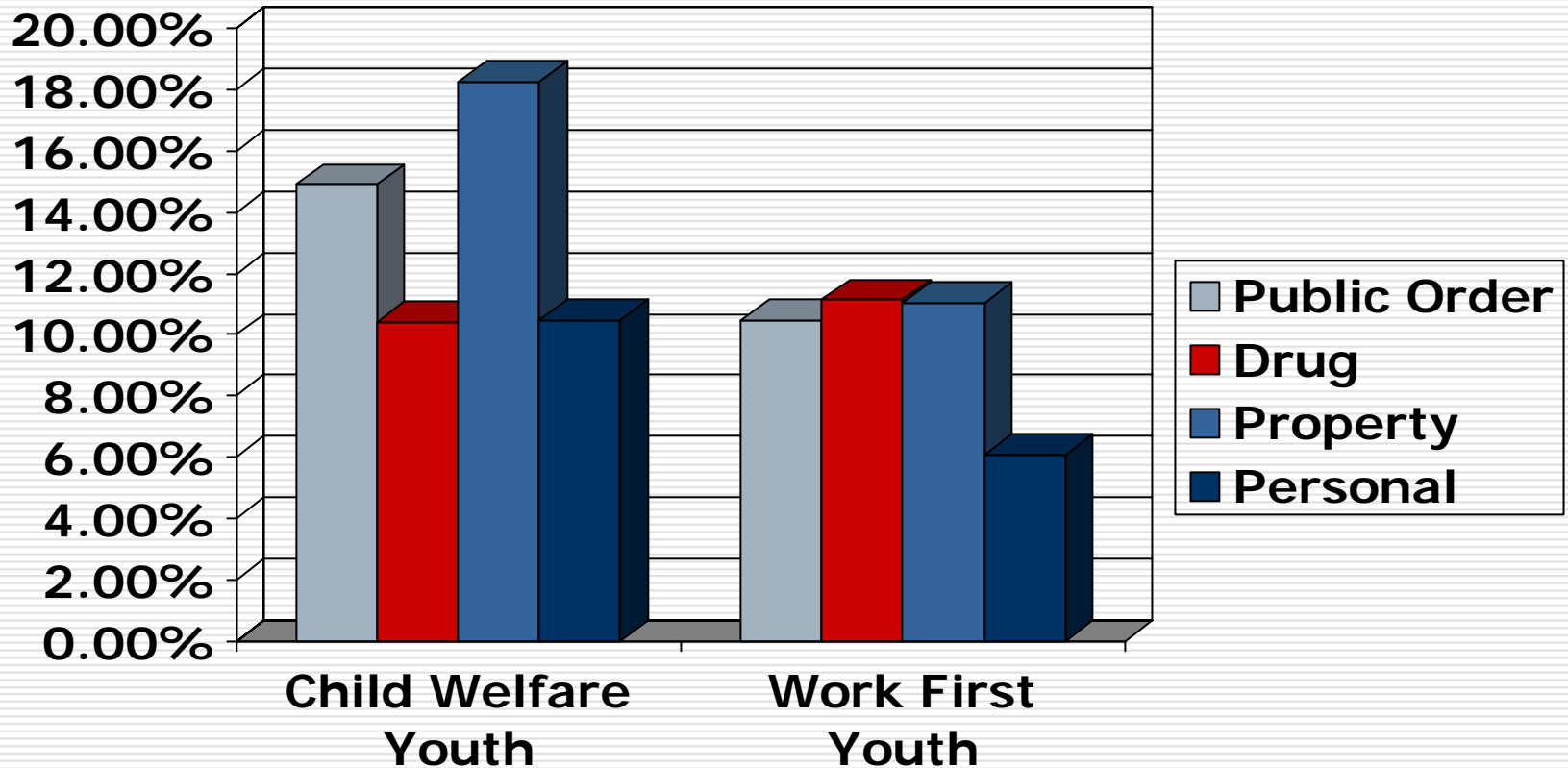
# Ever Charged With a Felony?

---



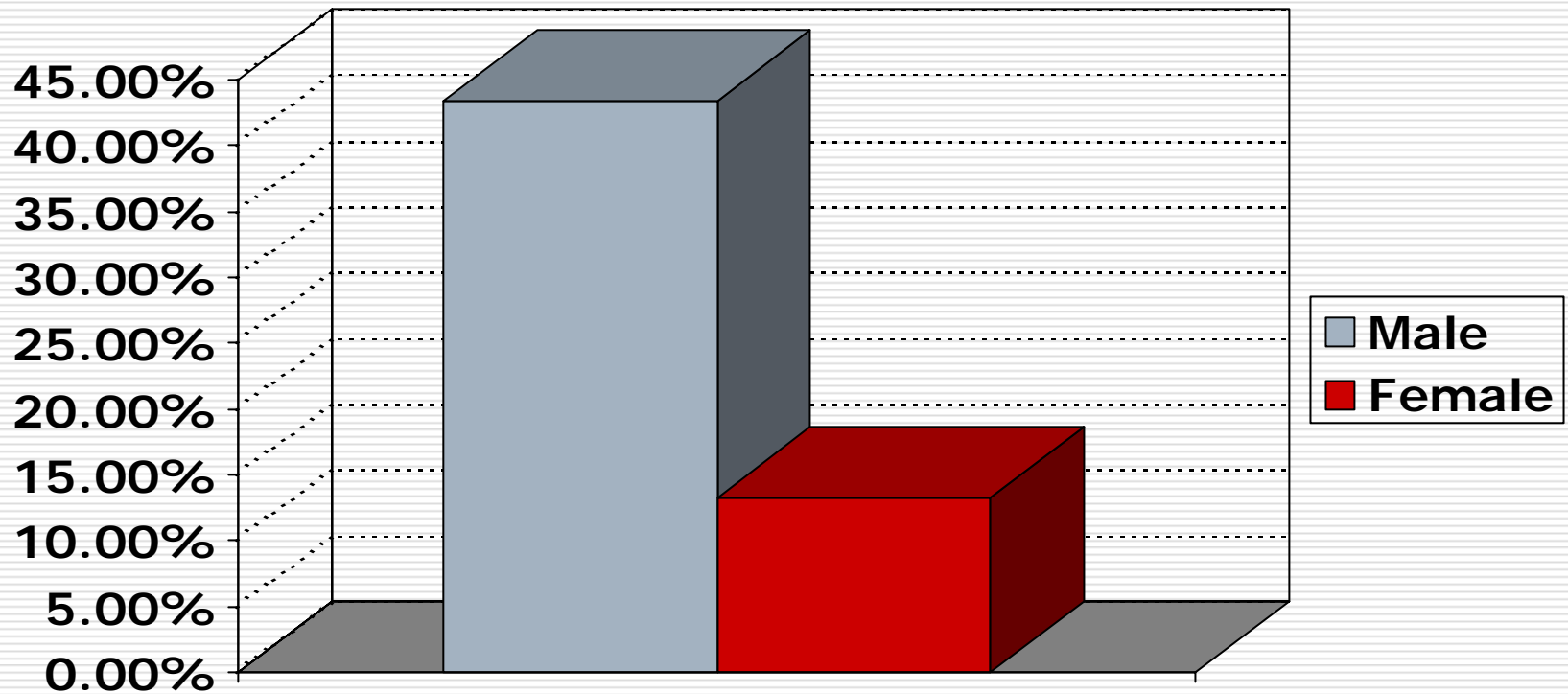
# Type of Felony

---



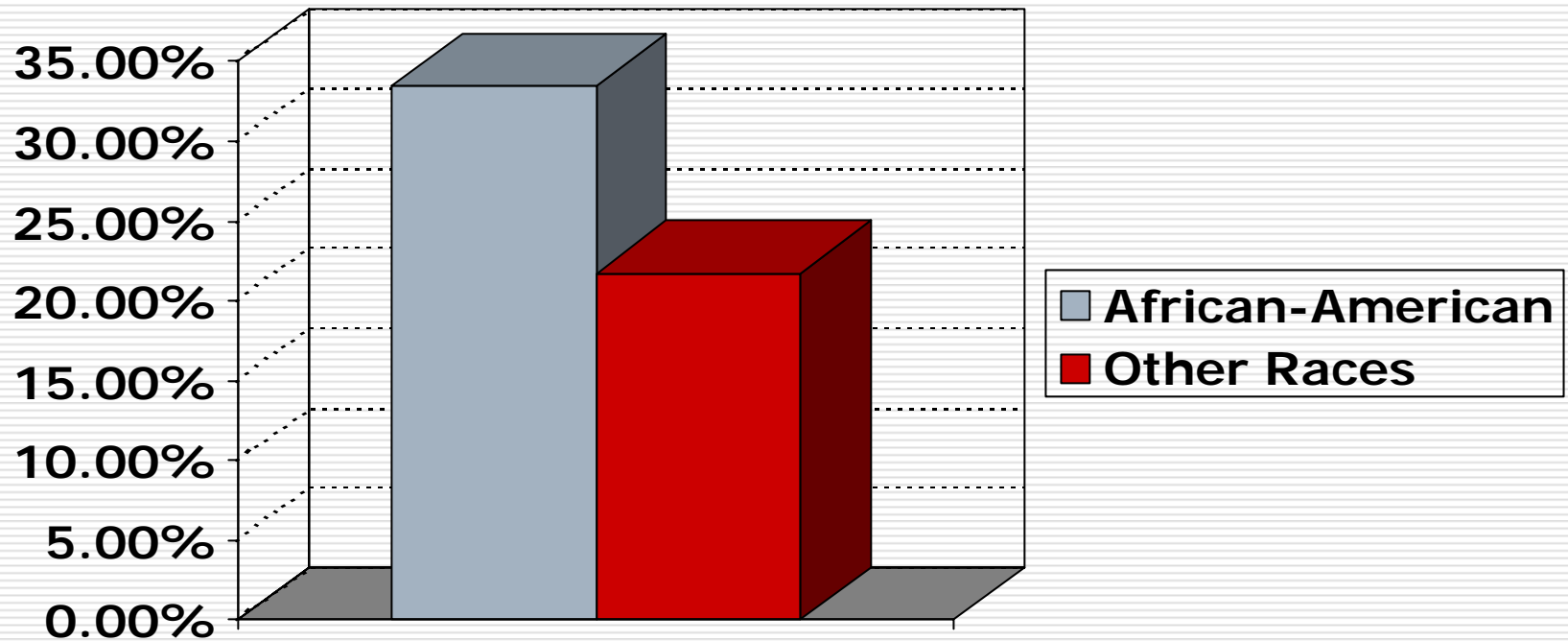
# Percentage of Child Welfare Youth With a Felony Charge by Gender

---



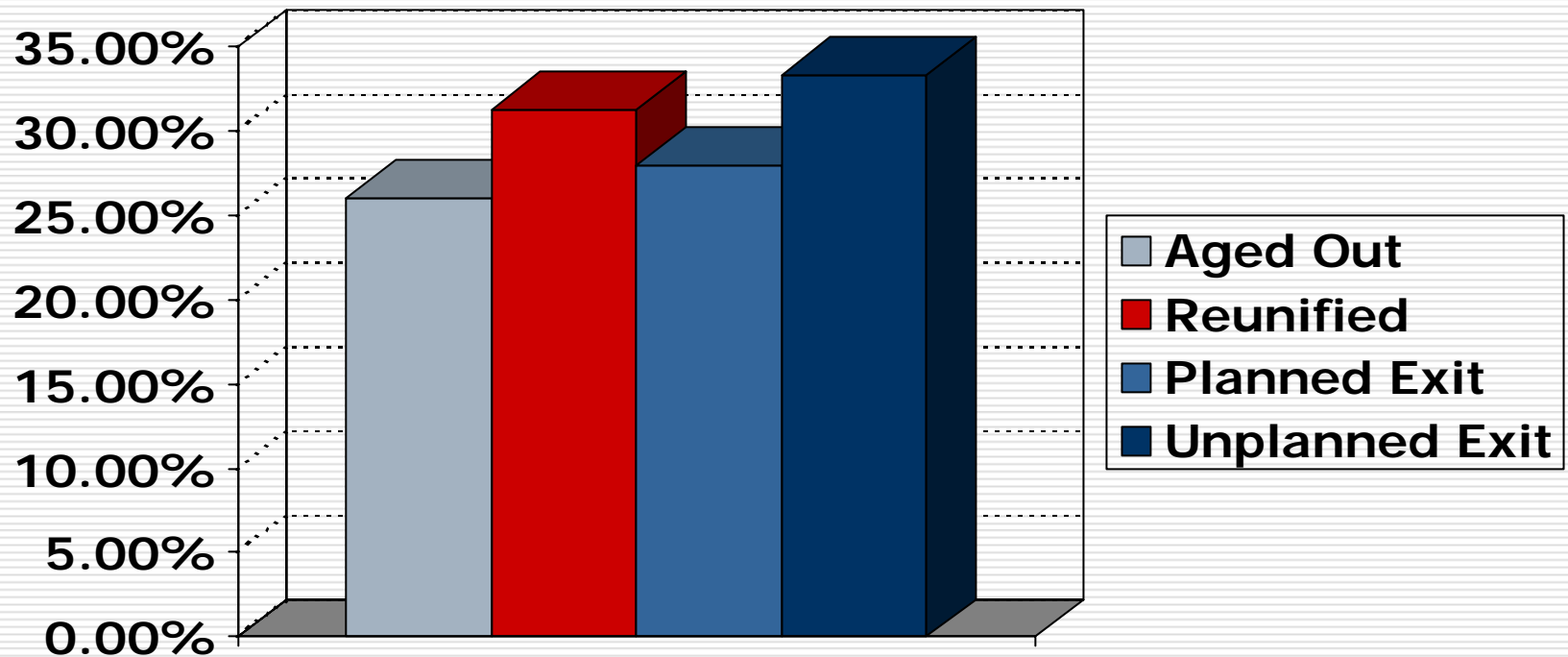
# Percentage of Child Welfare Youth With a Felony Charge by Race

---



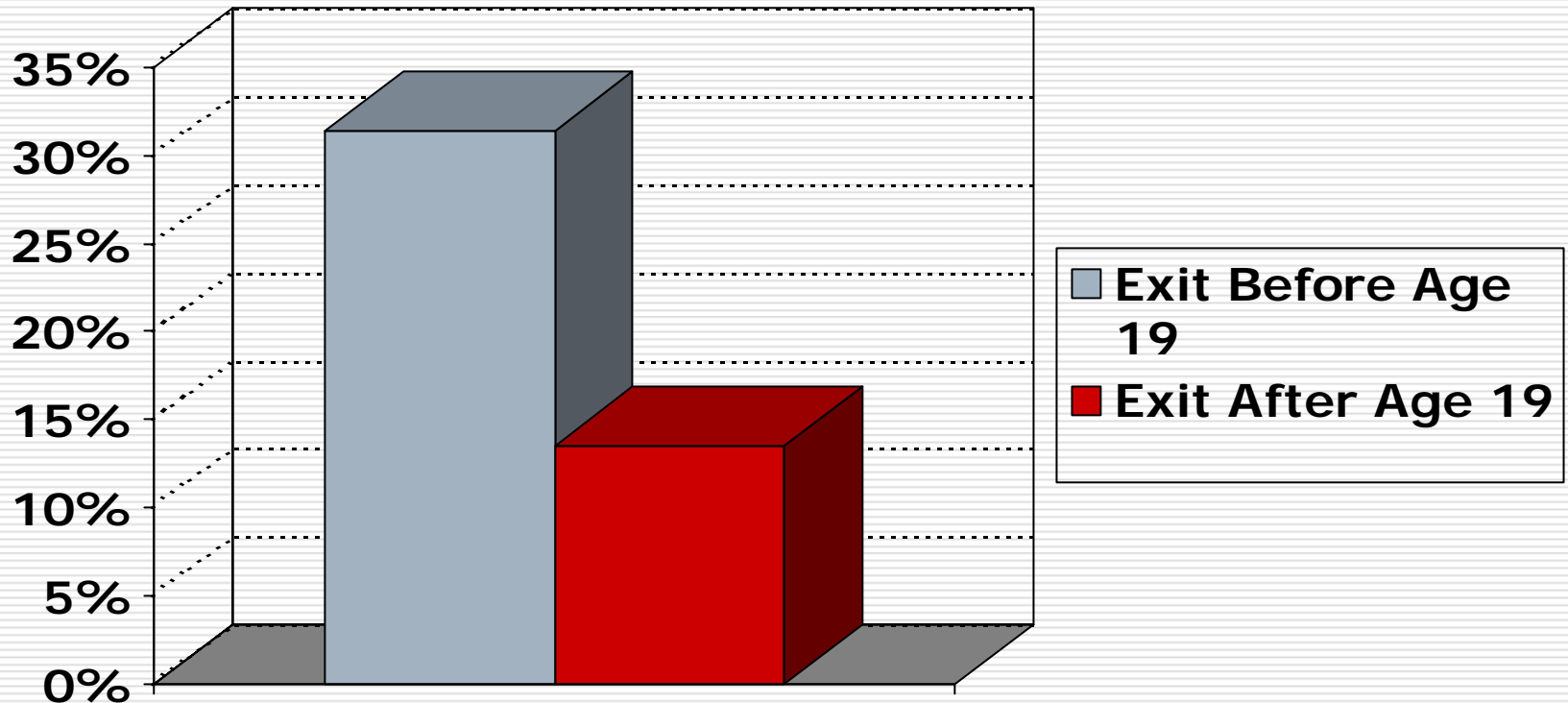
# Percentage of Child Welfare Youth With a Felony Charge by Type of Exit

---



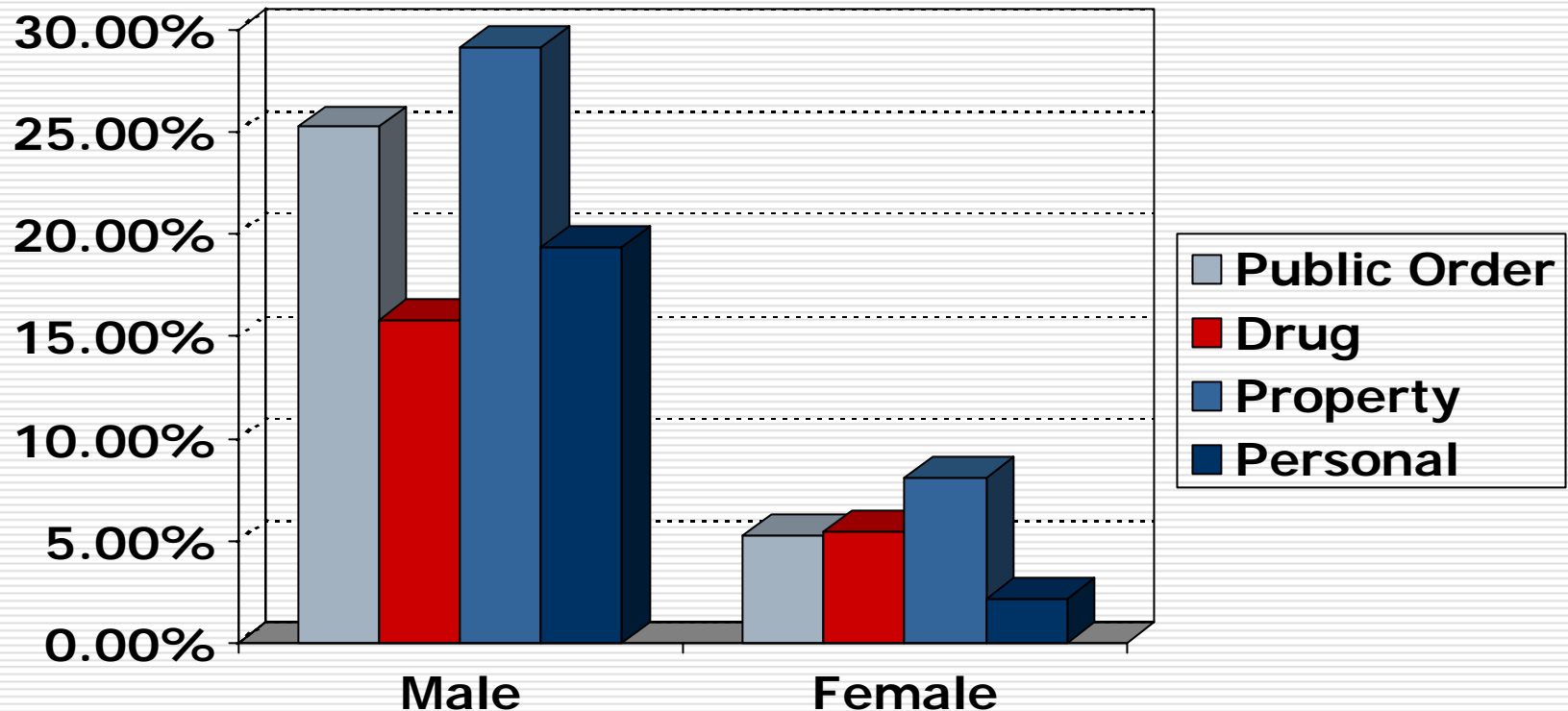
# Percentage of Child Welfare Youth With a Felony Charge by Type of Exit

---

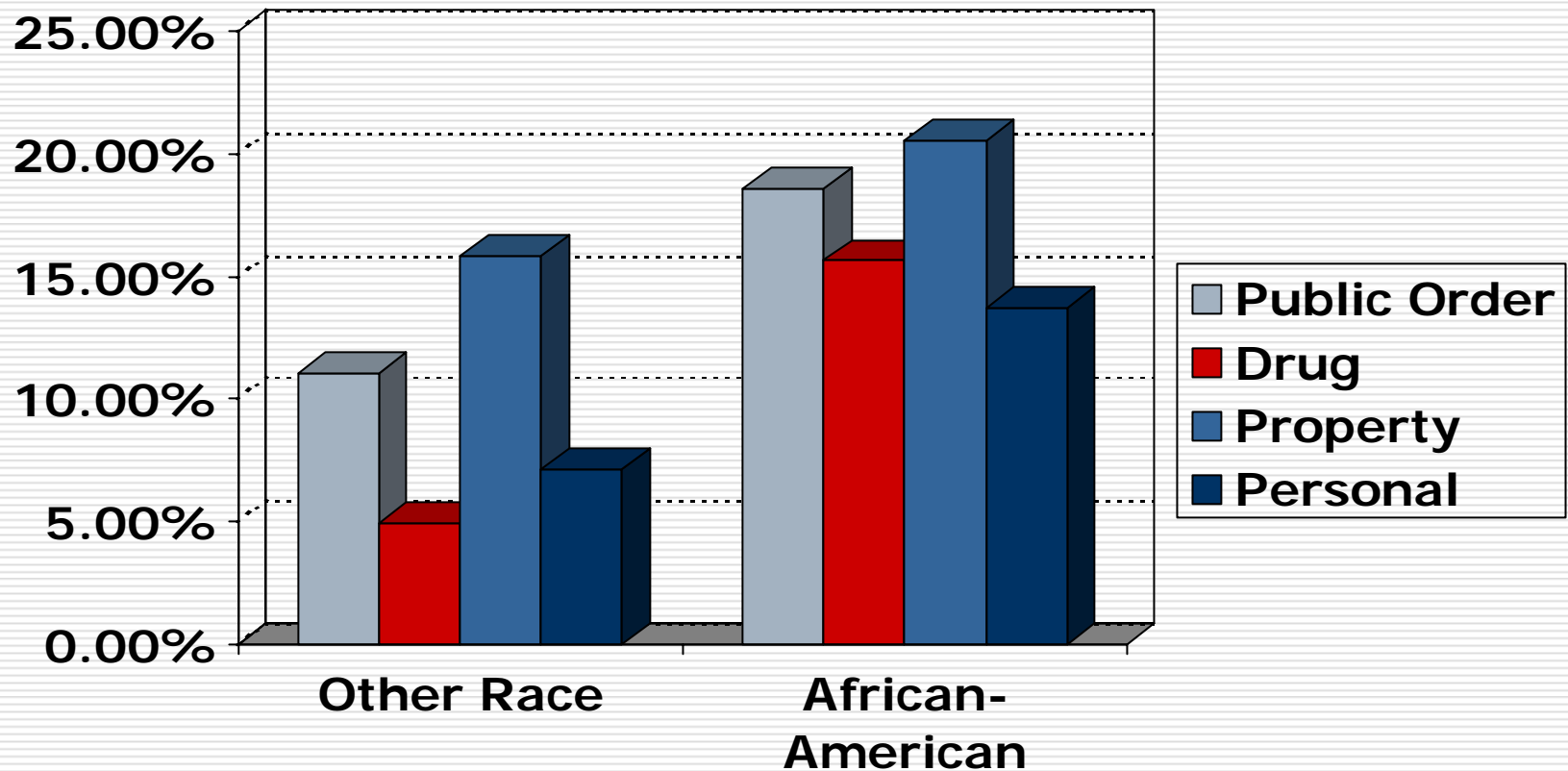


# Percentage of Child Welfare Youth With a Felony Charge by Gender and Felony Type

---

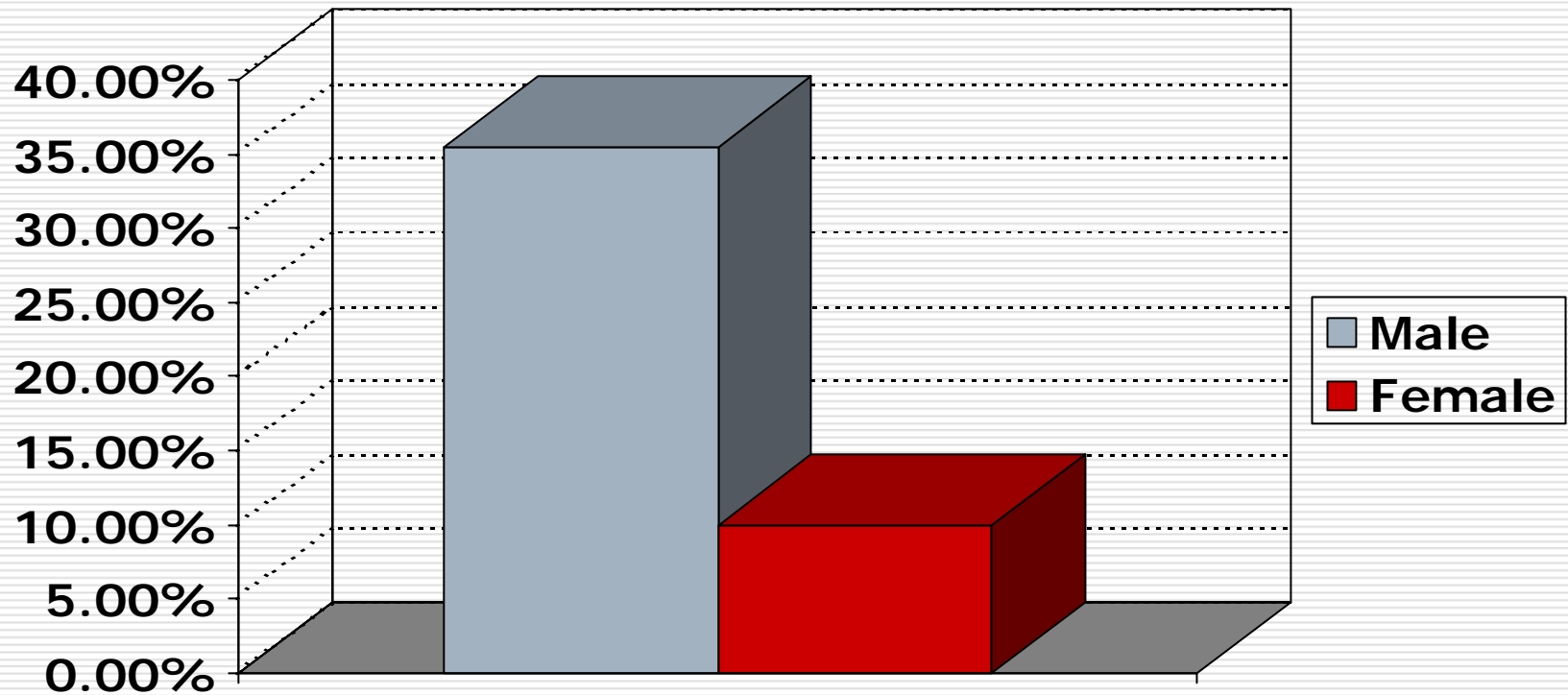


# Percentage of Child Welfare Youth With a Felony Charge by Race and Felony Type



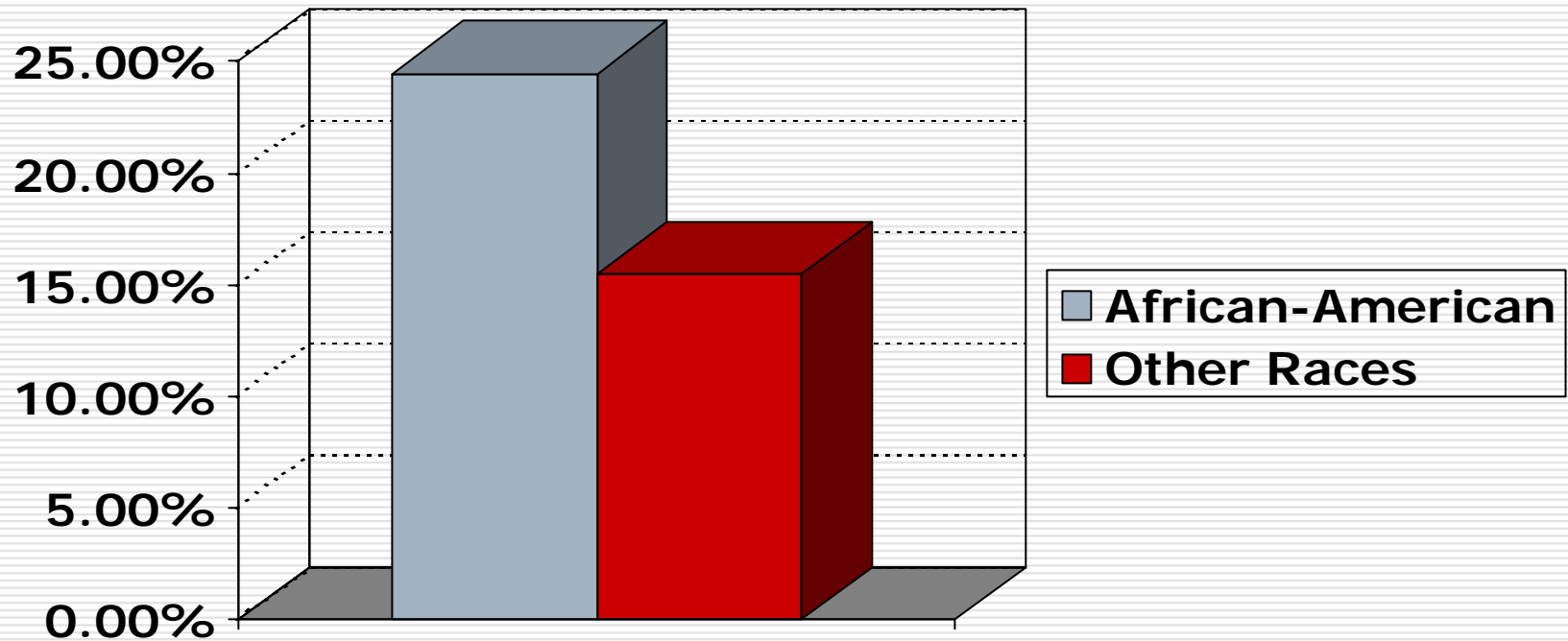
# Percentage of Work First Youth With a Felony Charge by Gender

---



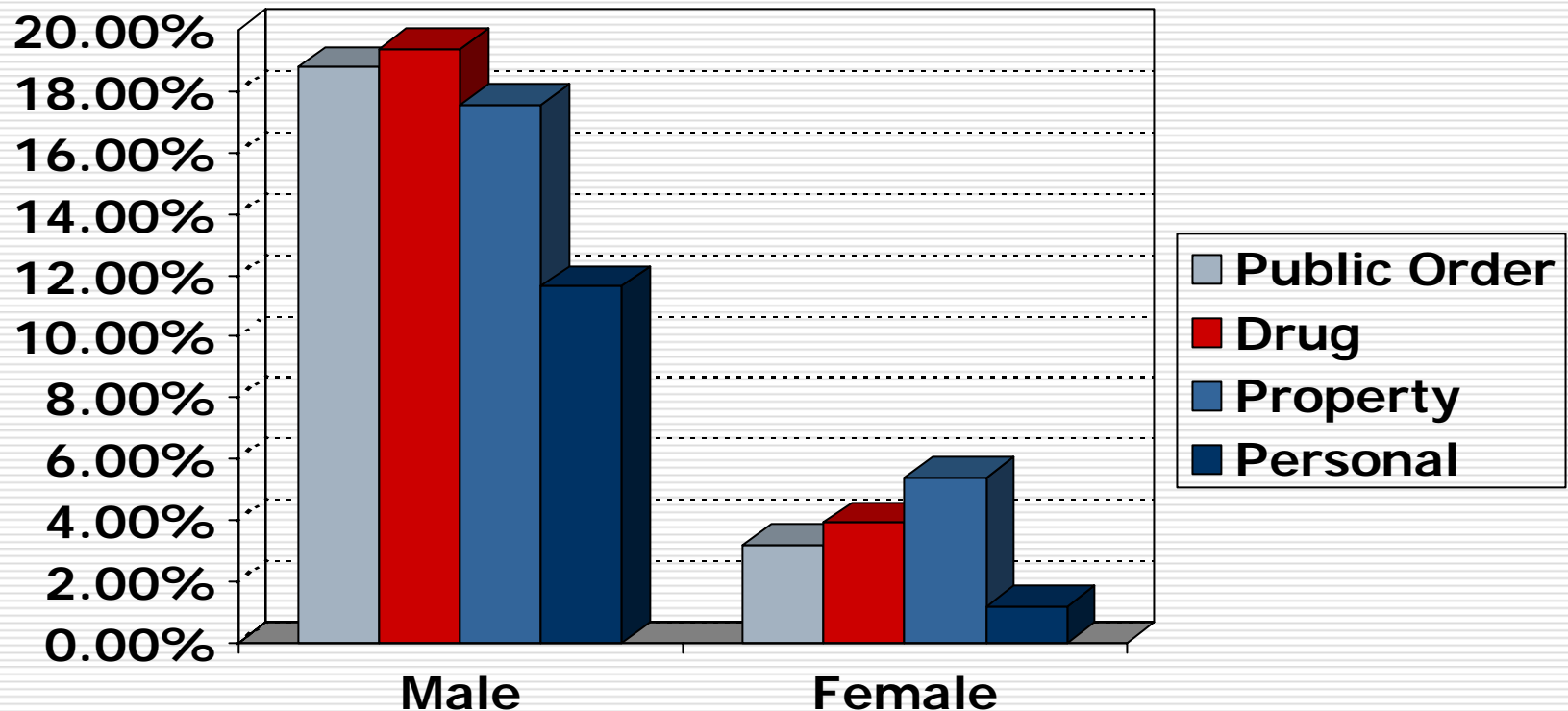
# Percentage of Work First Youth With a Felony Charge by Race

---

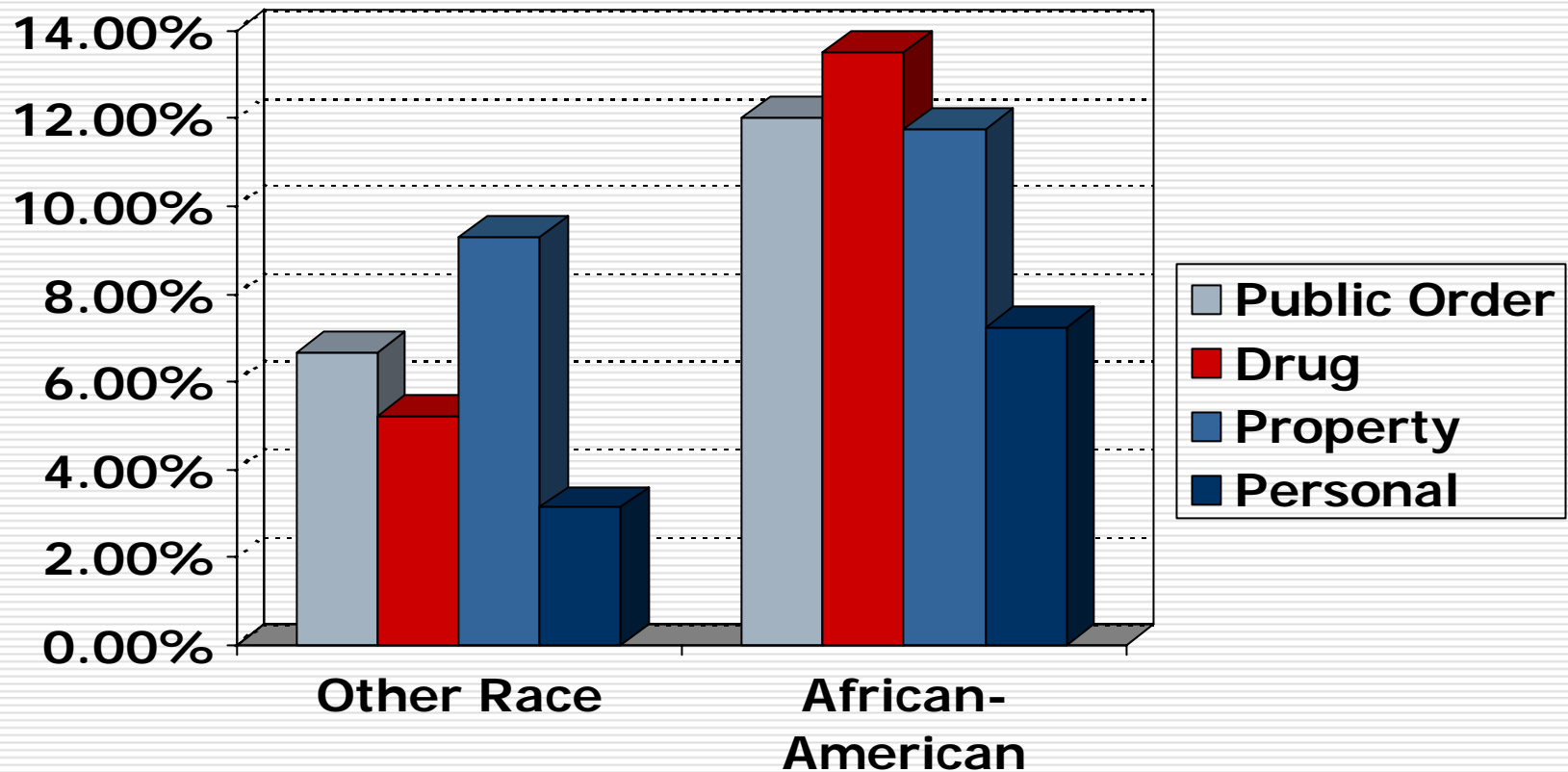


# Percentage of Work First Youth With a Felony Charge by Gender and Felony Type

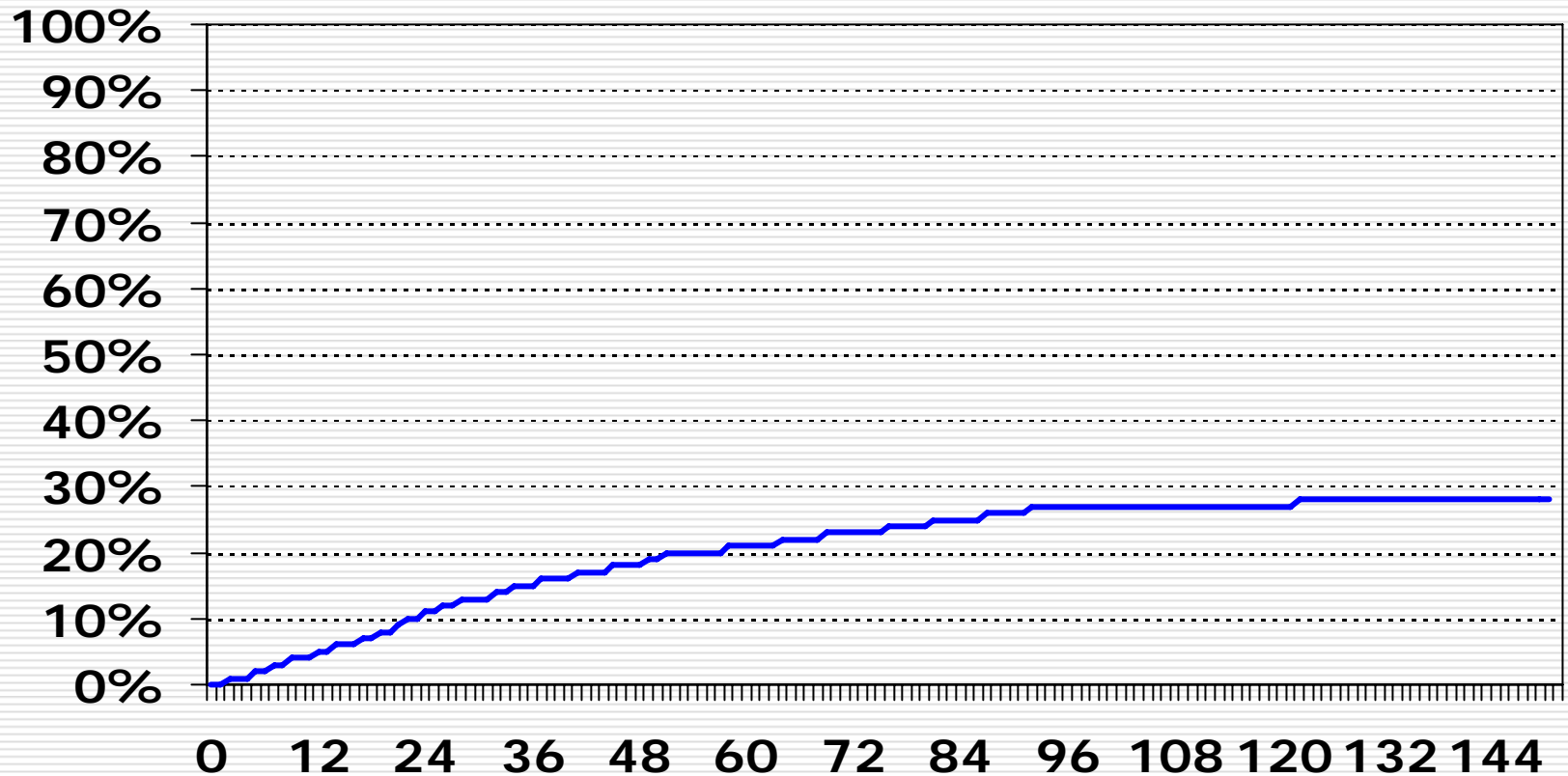
---



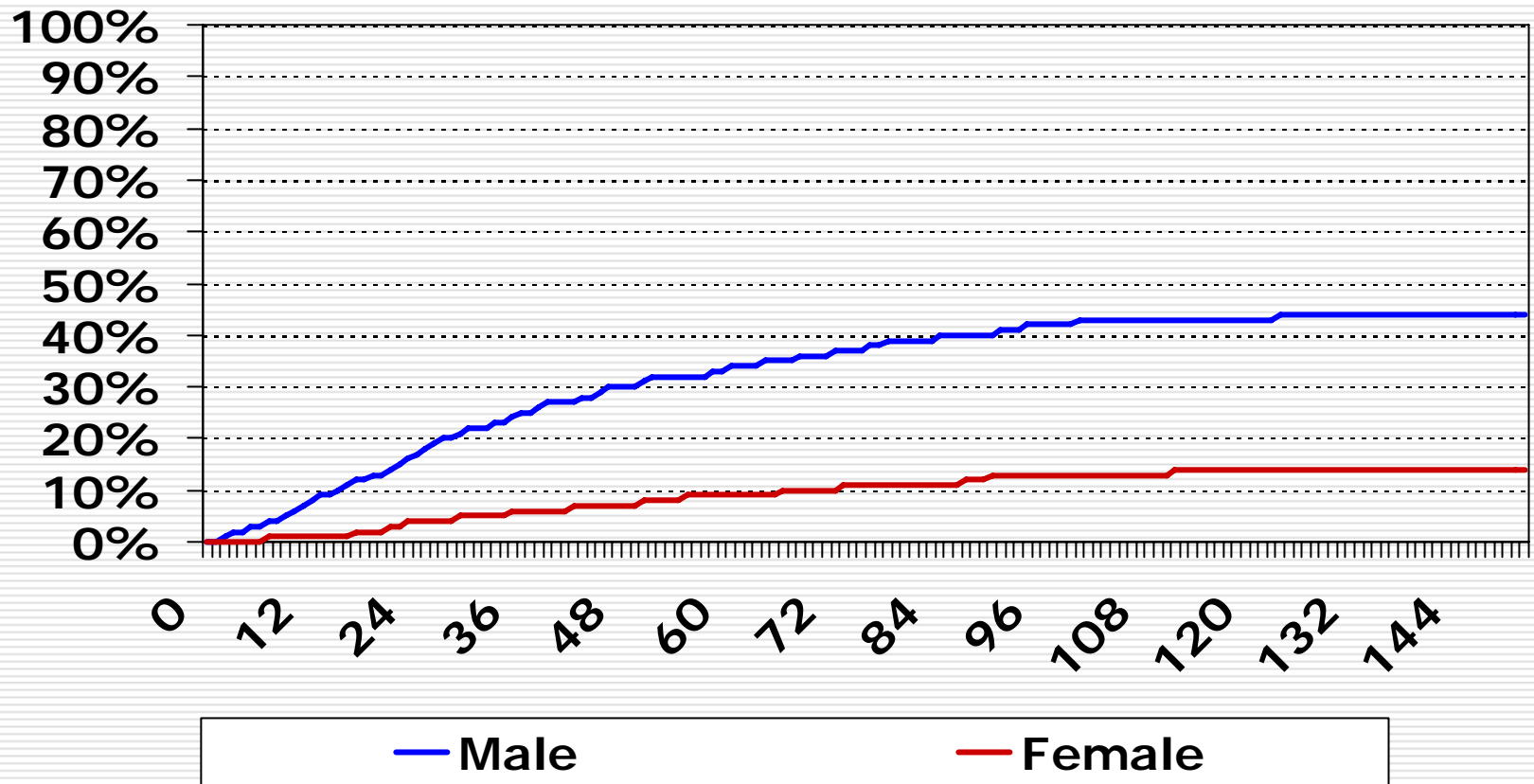
# Percentage of Work First Youth With a Felony Charge by Race and Felony Type



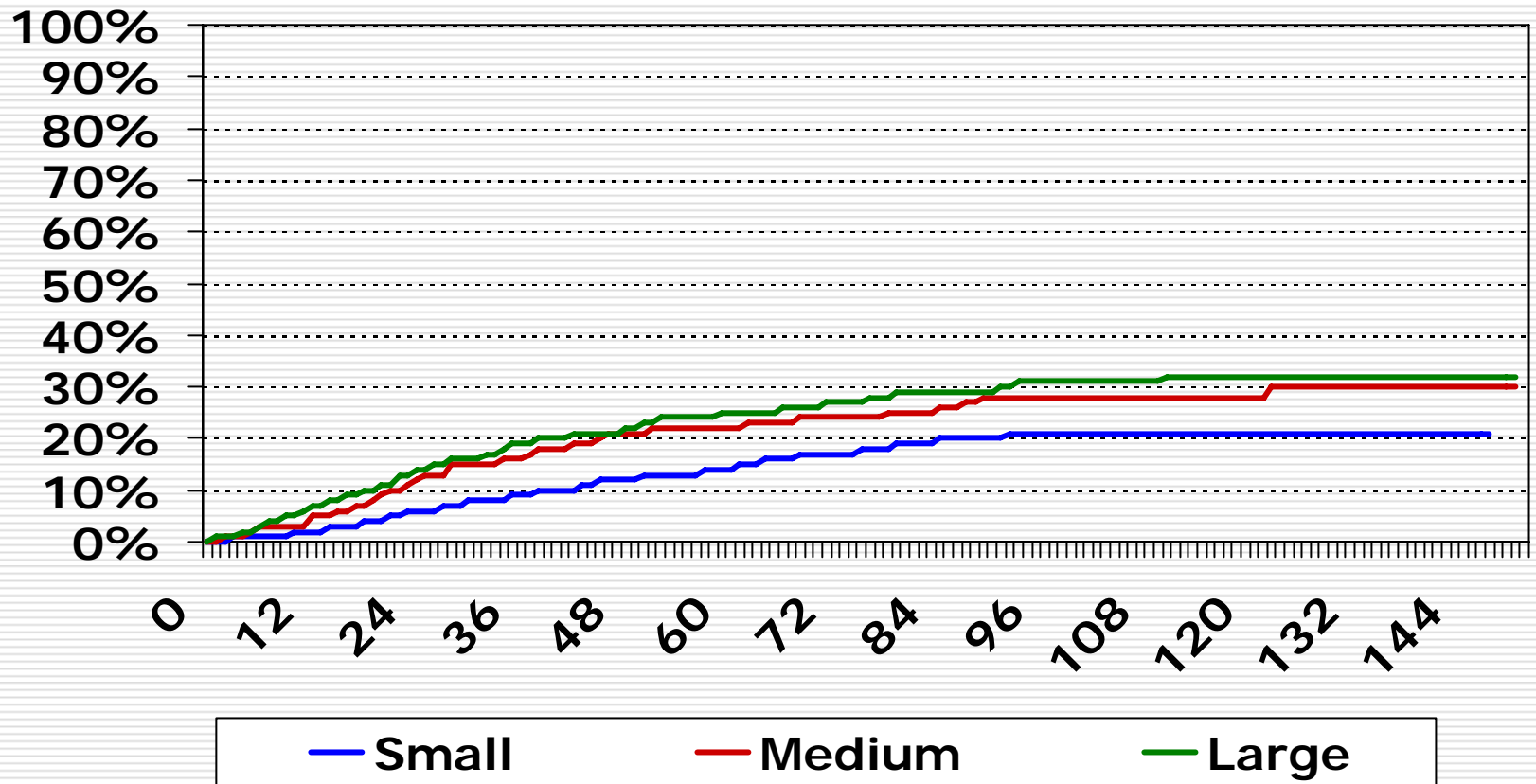
# Months to First Arrest: All Foster Youth



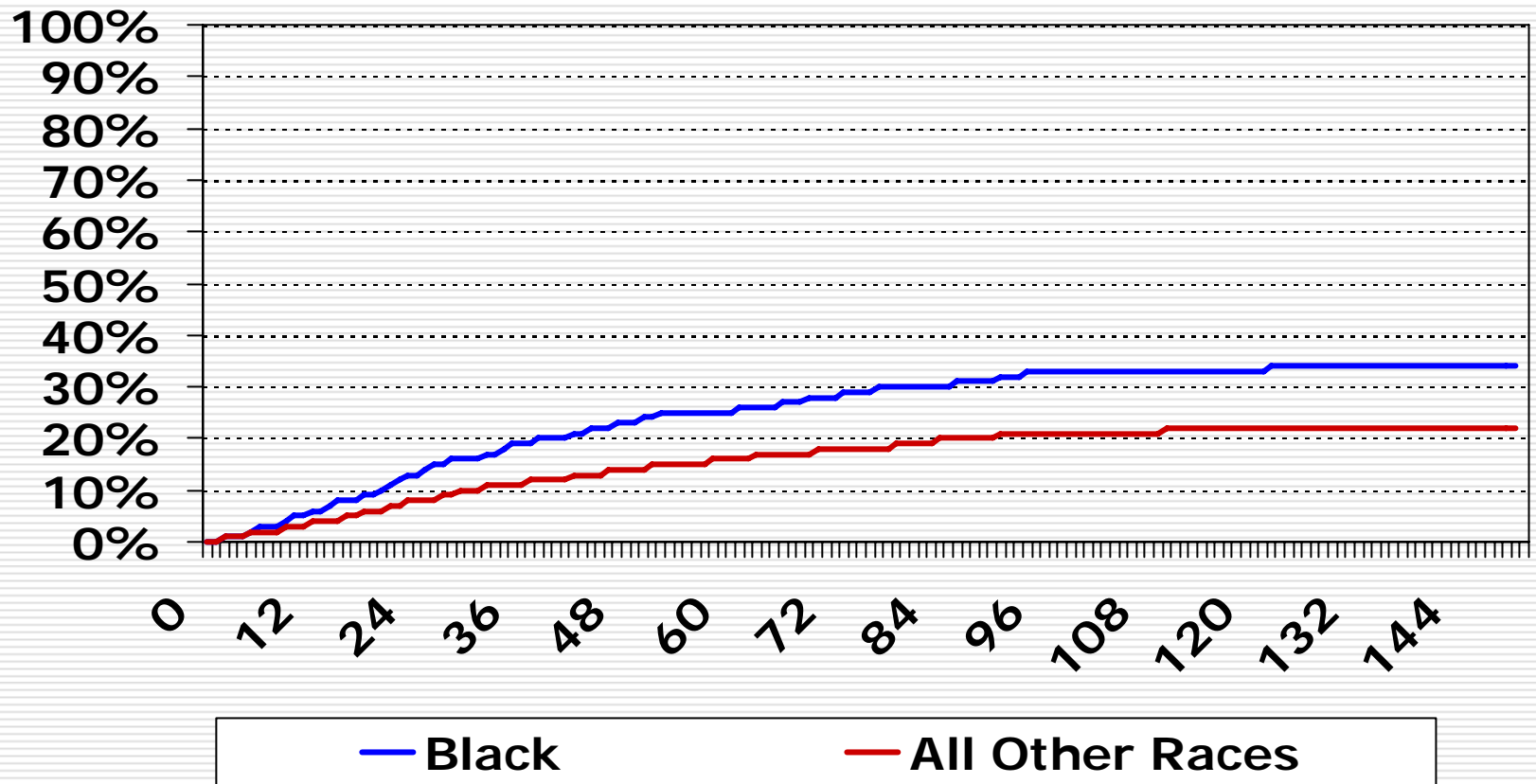
# Months to First Arrest: All Foster Youth by Gender



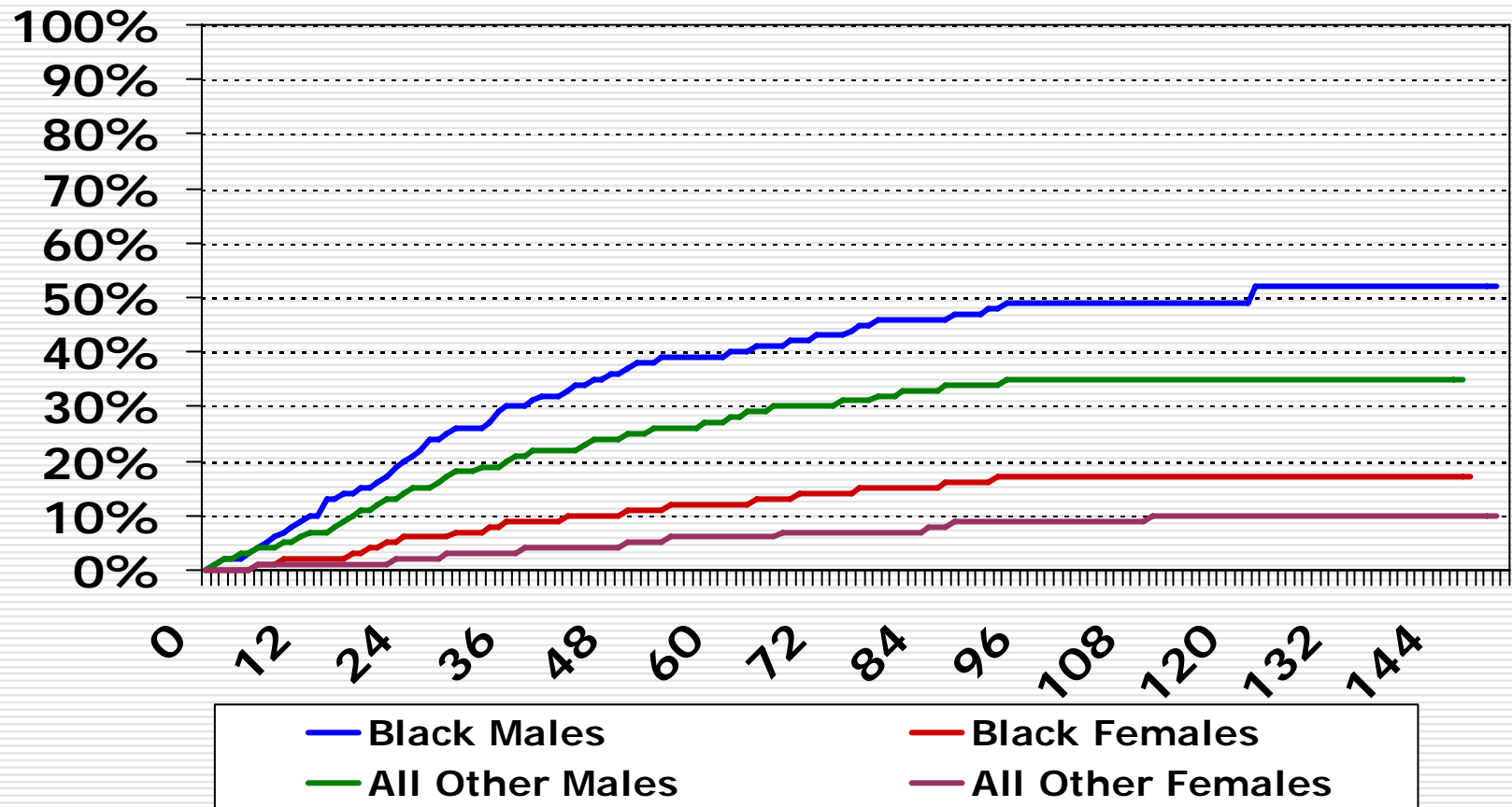
# Months to First Arrest: All Foster Youth by Size of County



# Months to First Arrest: All Foster Youth by Race

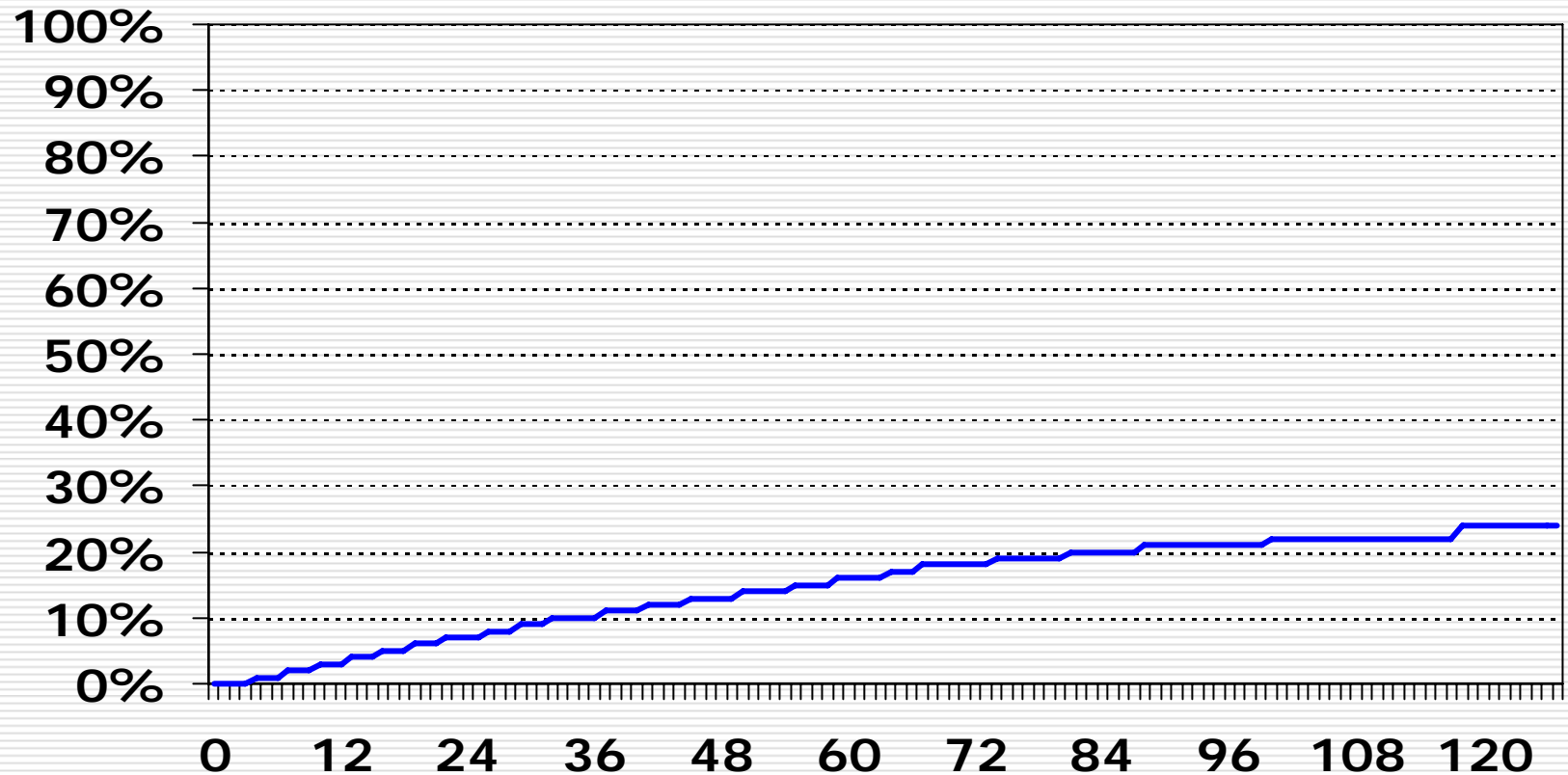


# Months to First Arrest: All Foster Youth by Race and Gender

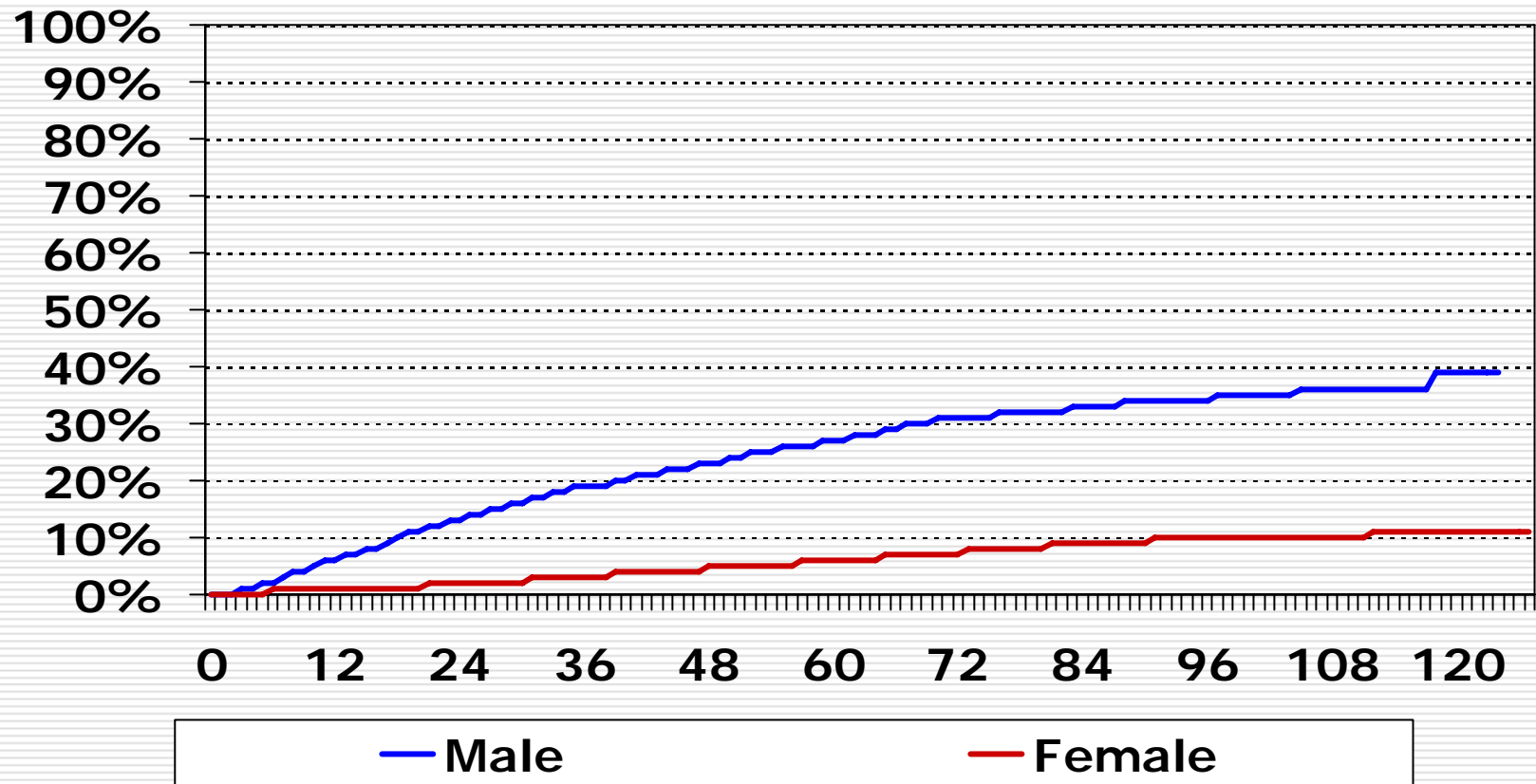


# Months to First Arrest: All Work First Youth

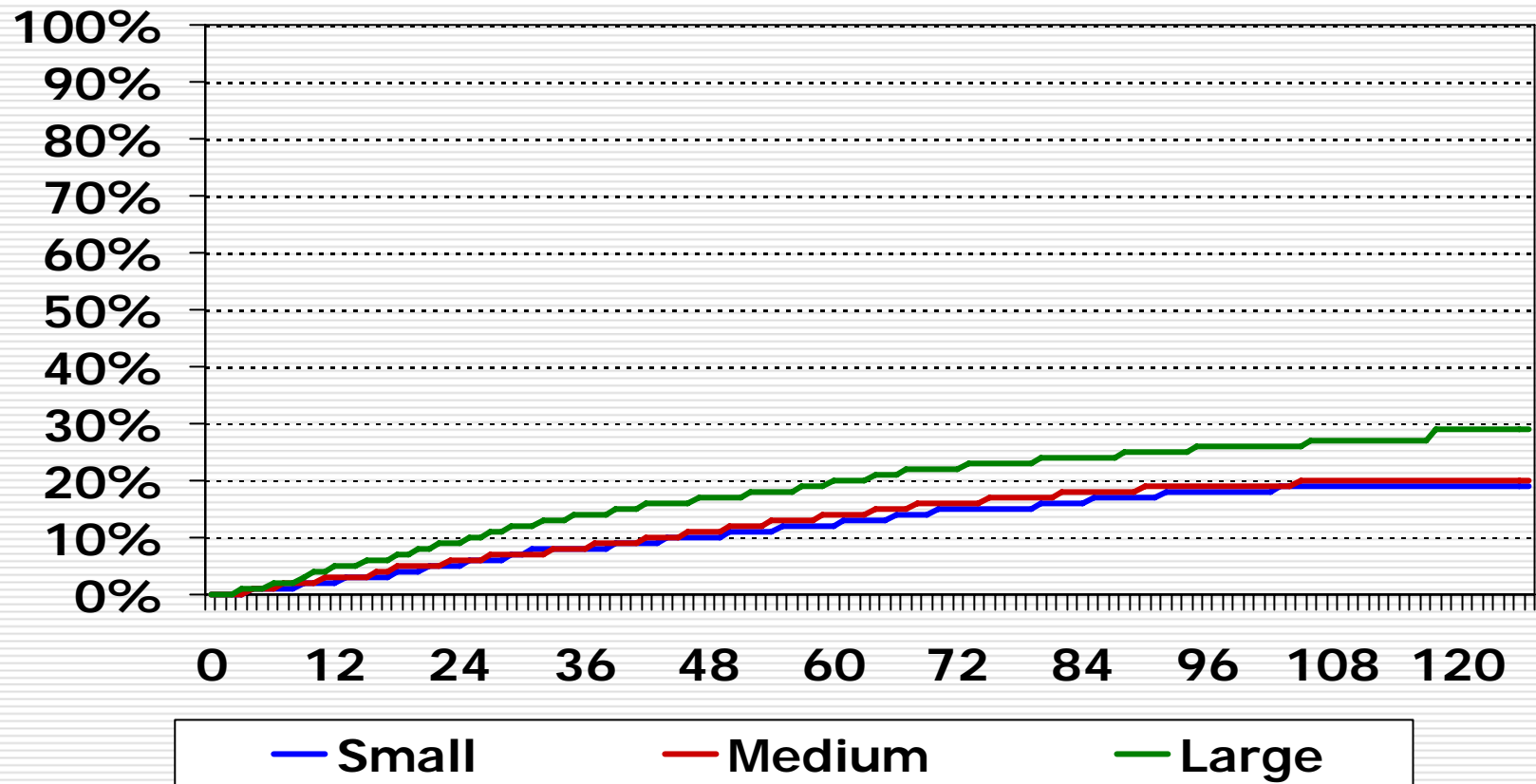
---



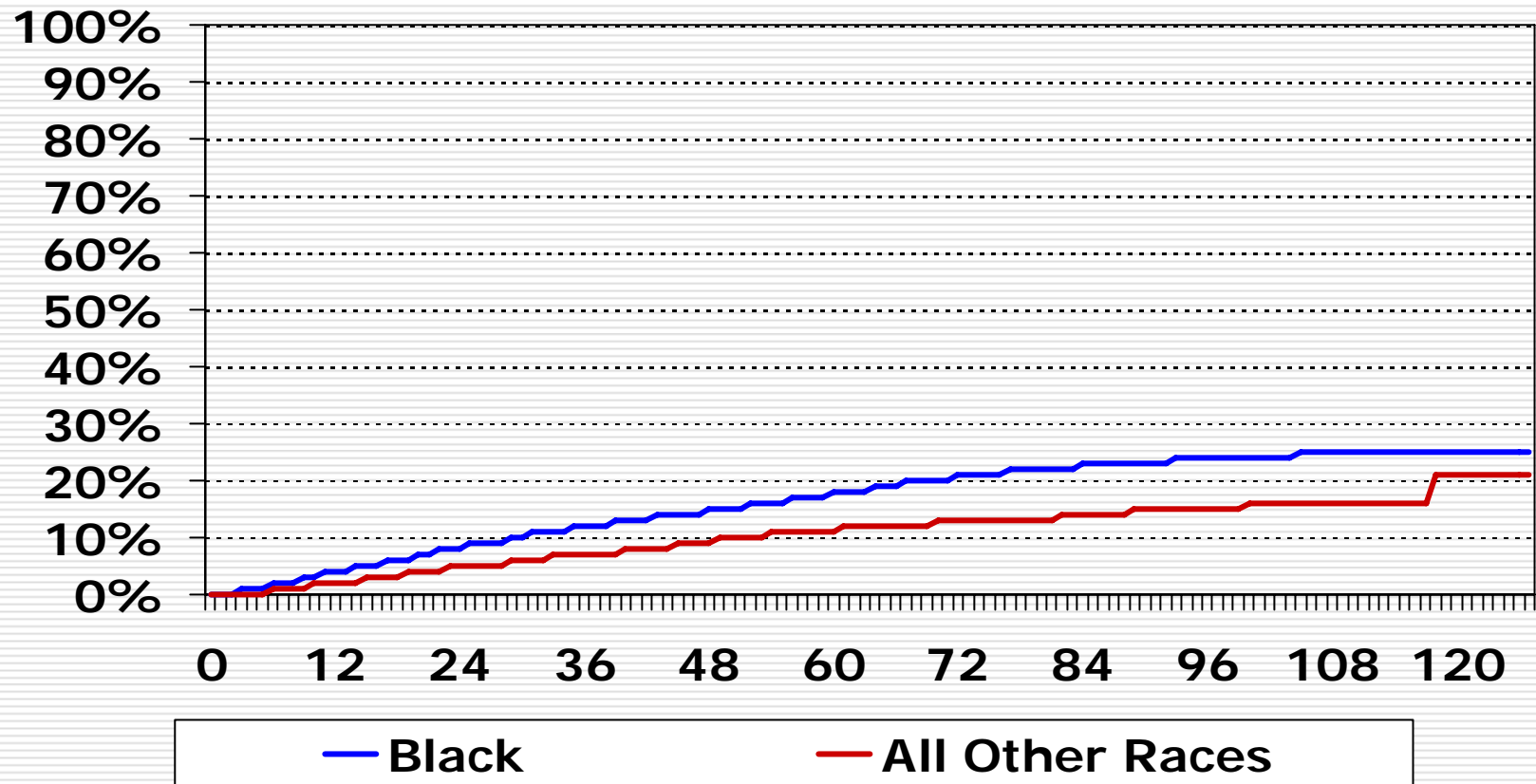
# Months to First Arrest: All Work First Youth by Gender



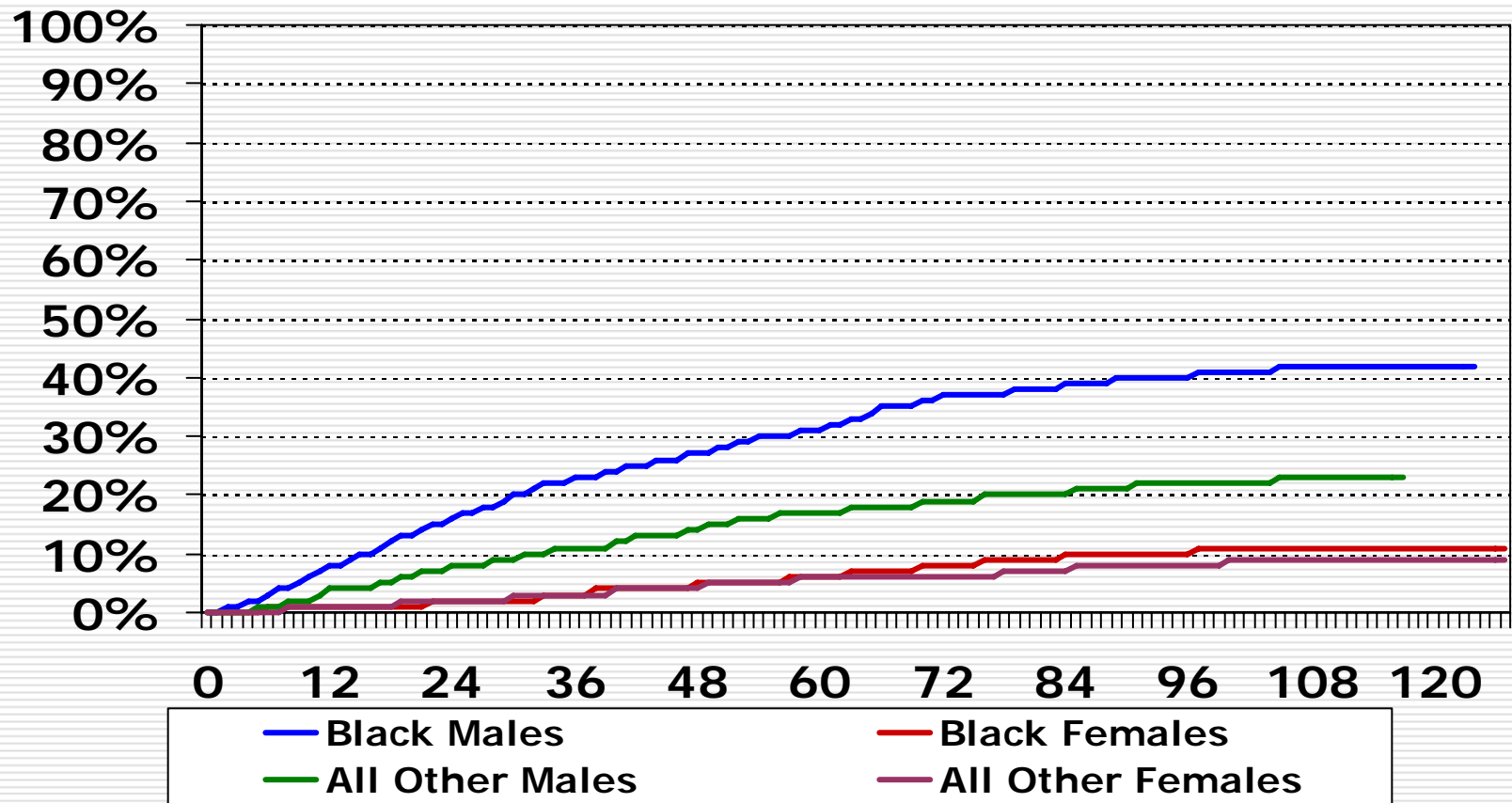
# Months to First Arrest: All Work First Youth by Size of County



# Months to First Arrest: All Work First Youth by Race



# Months to First Arrest: All Work First Youth by Race and Gender



# Youth Charged with Felonies

---

- ❑ A higher percentage of the youth who were in foster care were charged with felonies than the youth whose families were on Work First
- ❑ Within each group, males were more likely to be charged than females
- ❑ Within each group, African-American youth were more likely to be charged than others



# Employment Trajectories and Arrest for Felonies

---



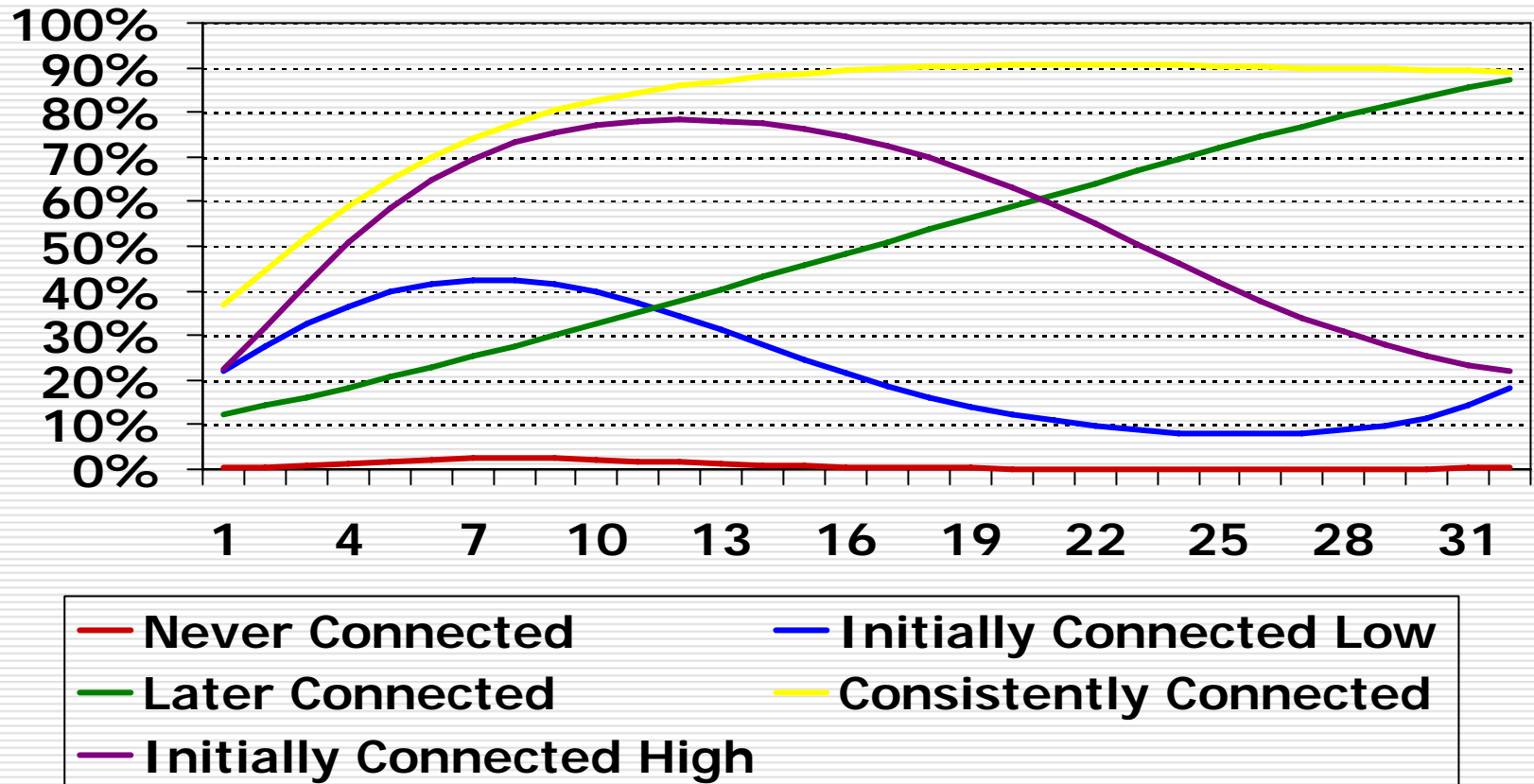
# Employment Trajectories and Arrests for Felonies

---

- The first presentation in this session focused on the employment outcomes of 284 former foster youth from North Carolina who aged out of care
- These 284 youth are a subset of the 1,316 youth described earlier in this presentation
- The following slides explore the connection between felonious arrest and employment trajectories for those youth

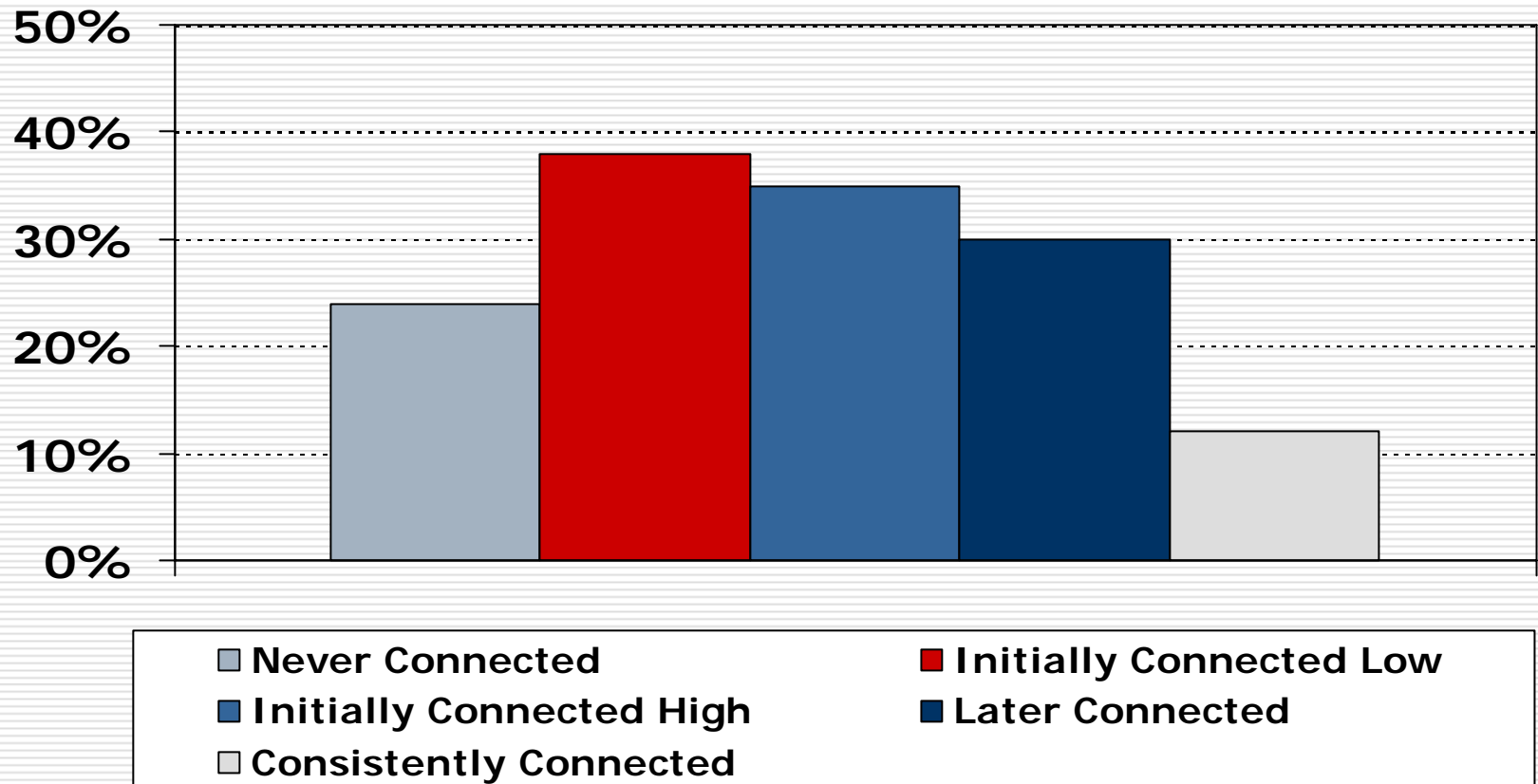


# Employment Trajectories



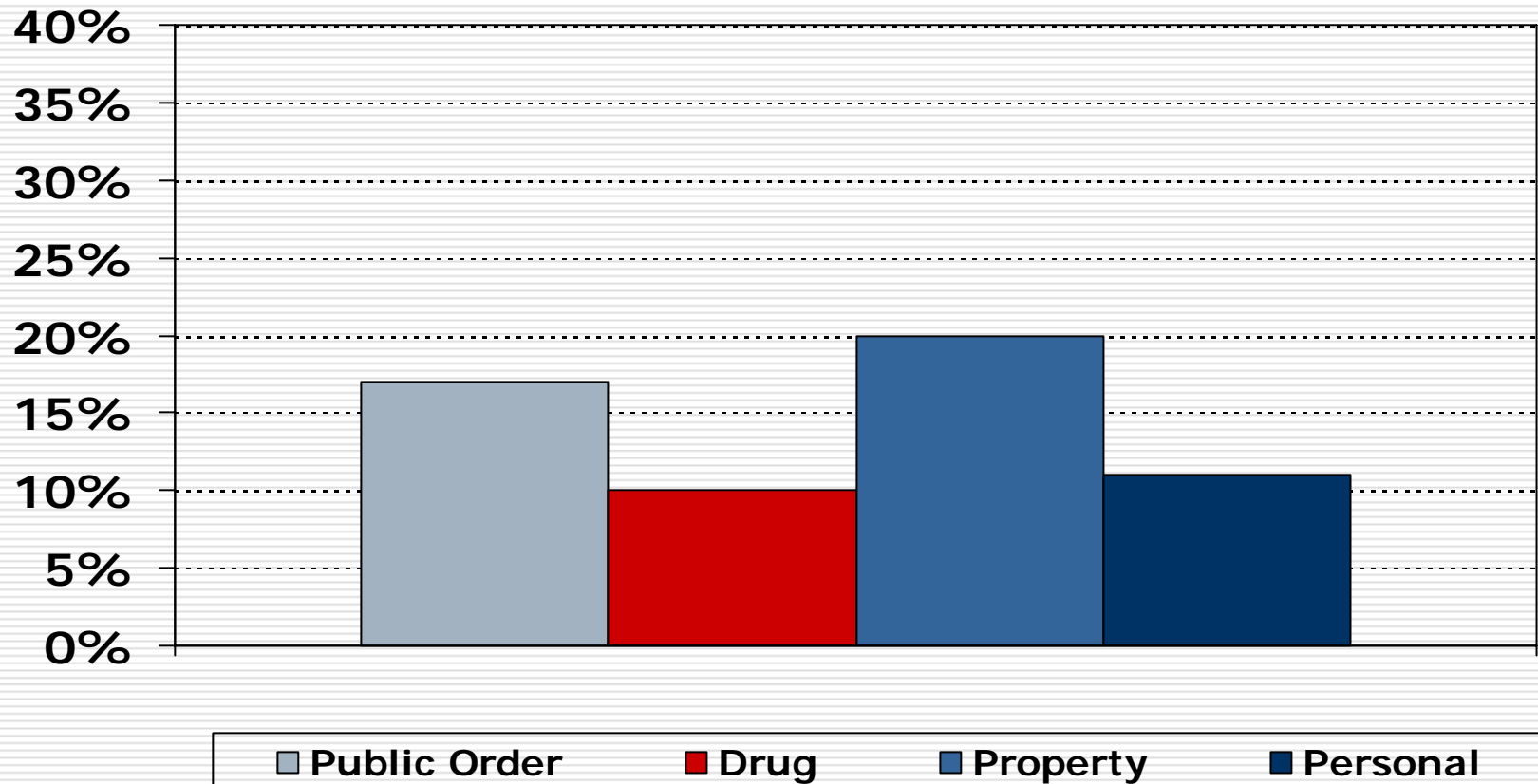
# Employment Trajectories and Arrests for Felonies

---

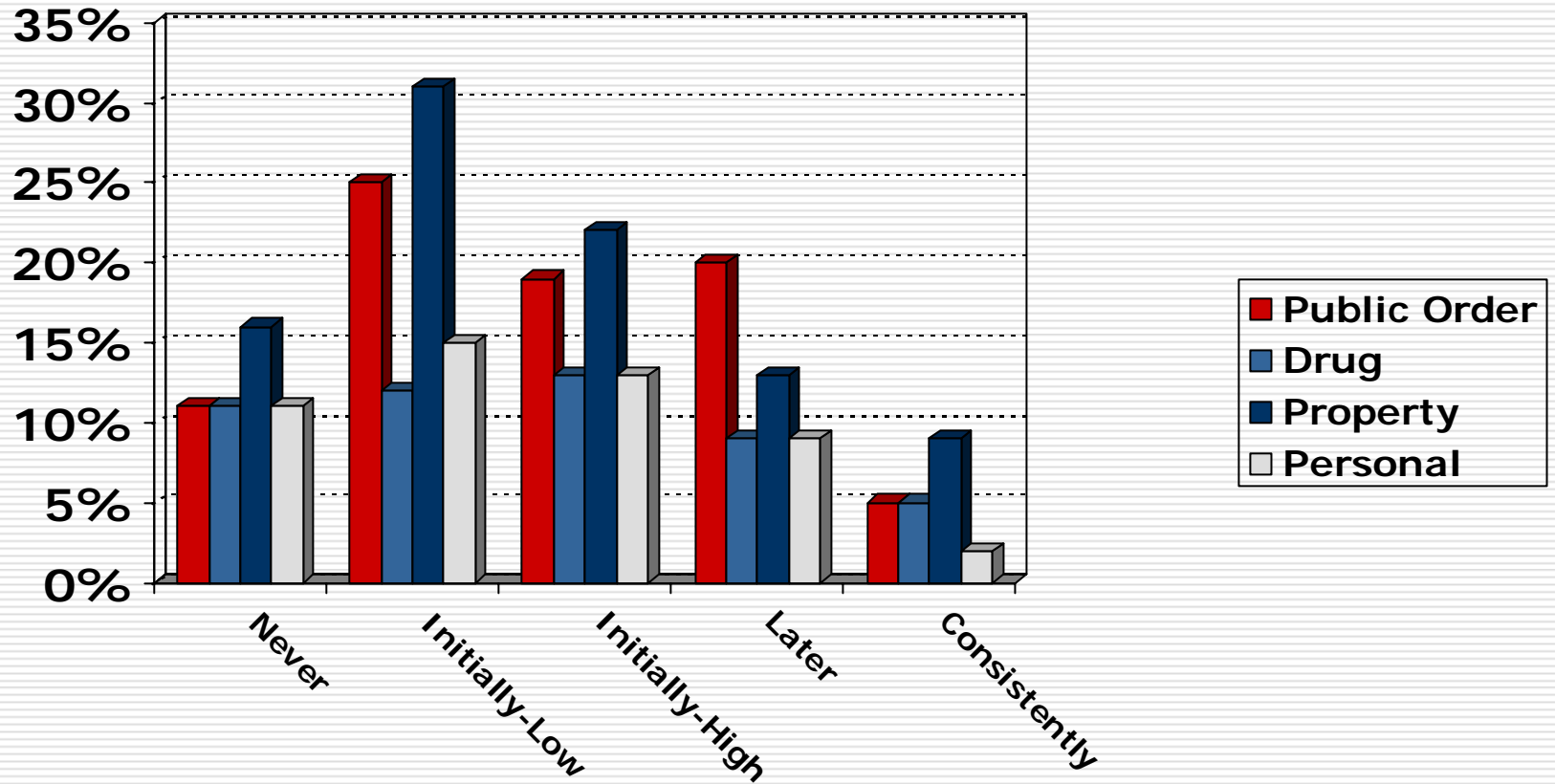


# Employment Trajectories and Arrests By Type of Felony

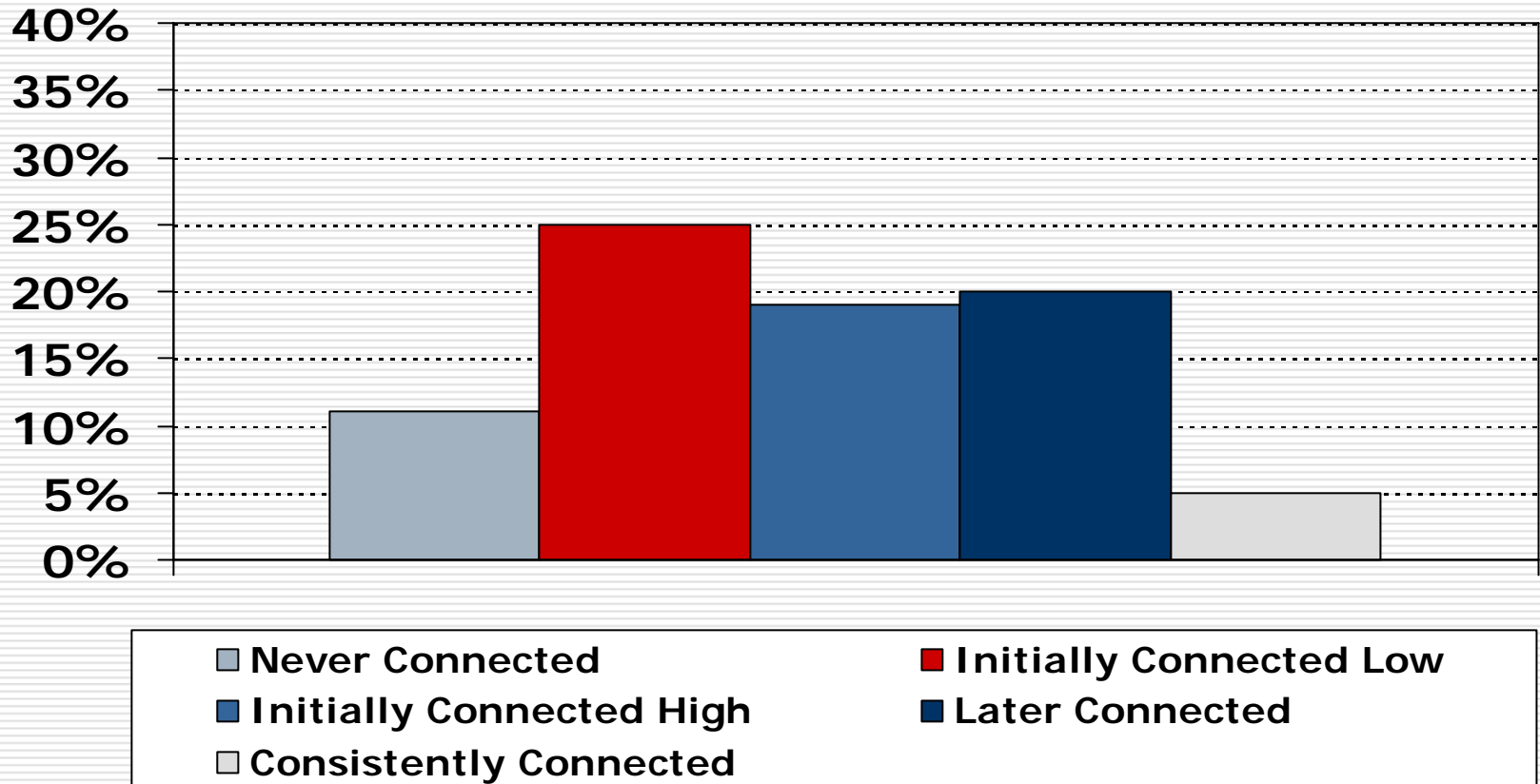
---



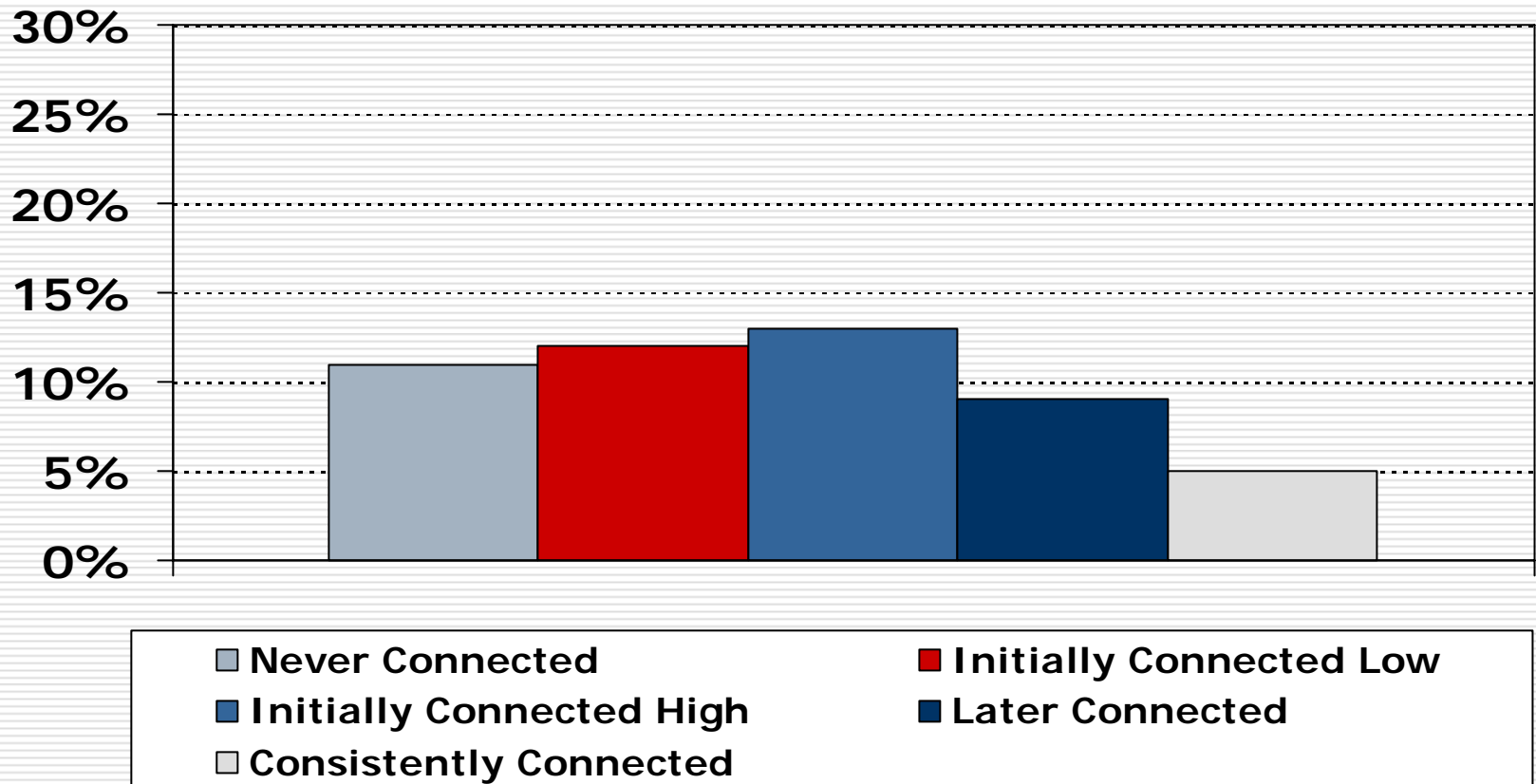
# Employment Trajectories and Arrests By Type of Felony



# Employment Trajectories and Arrests for Public Order Felonies

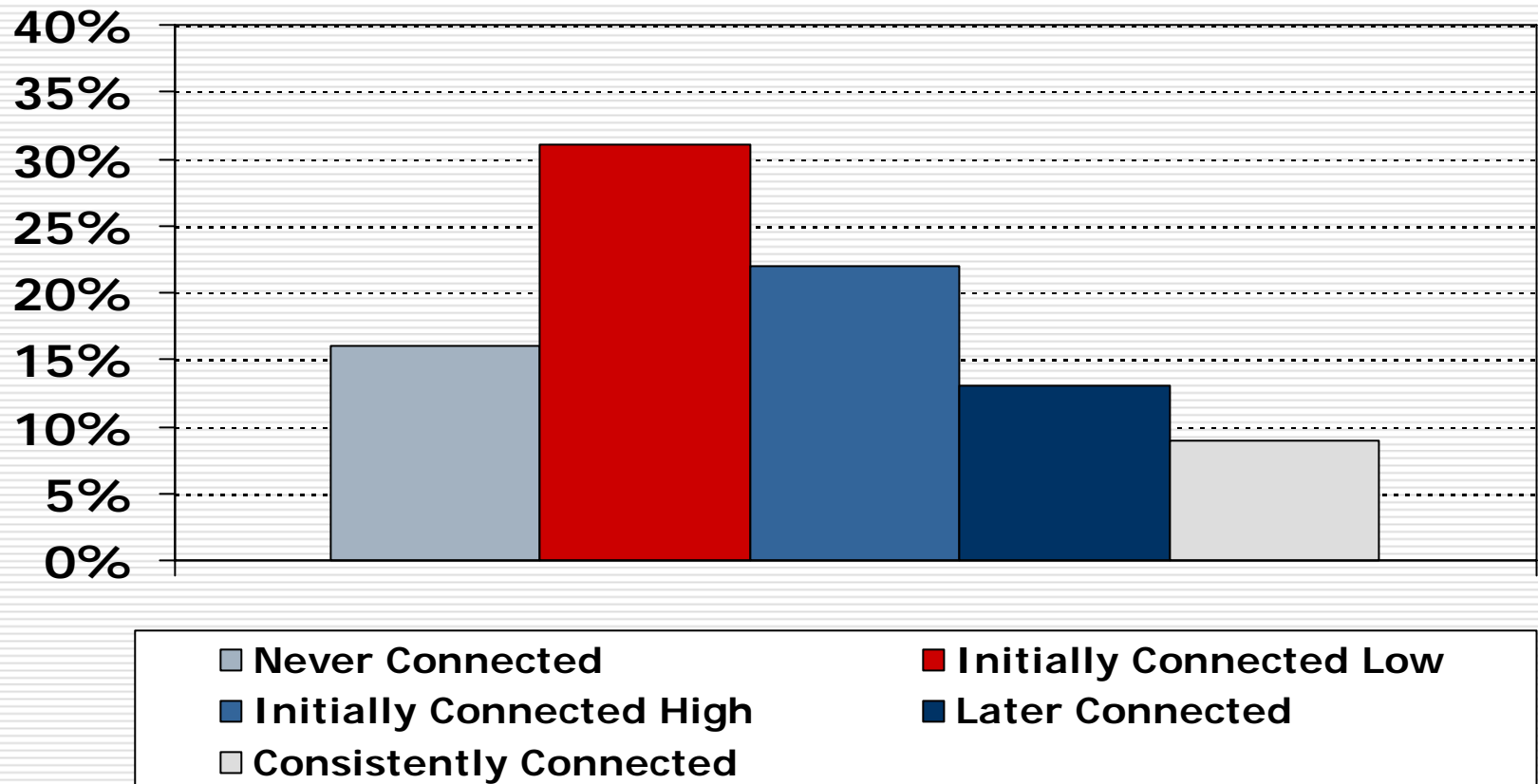


# Employment Trajectories and Arrests for Drug Felonies



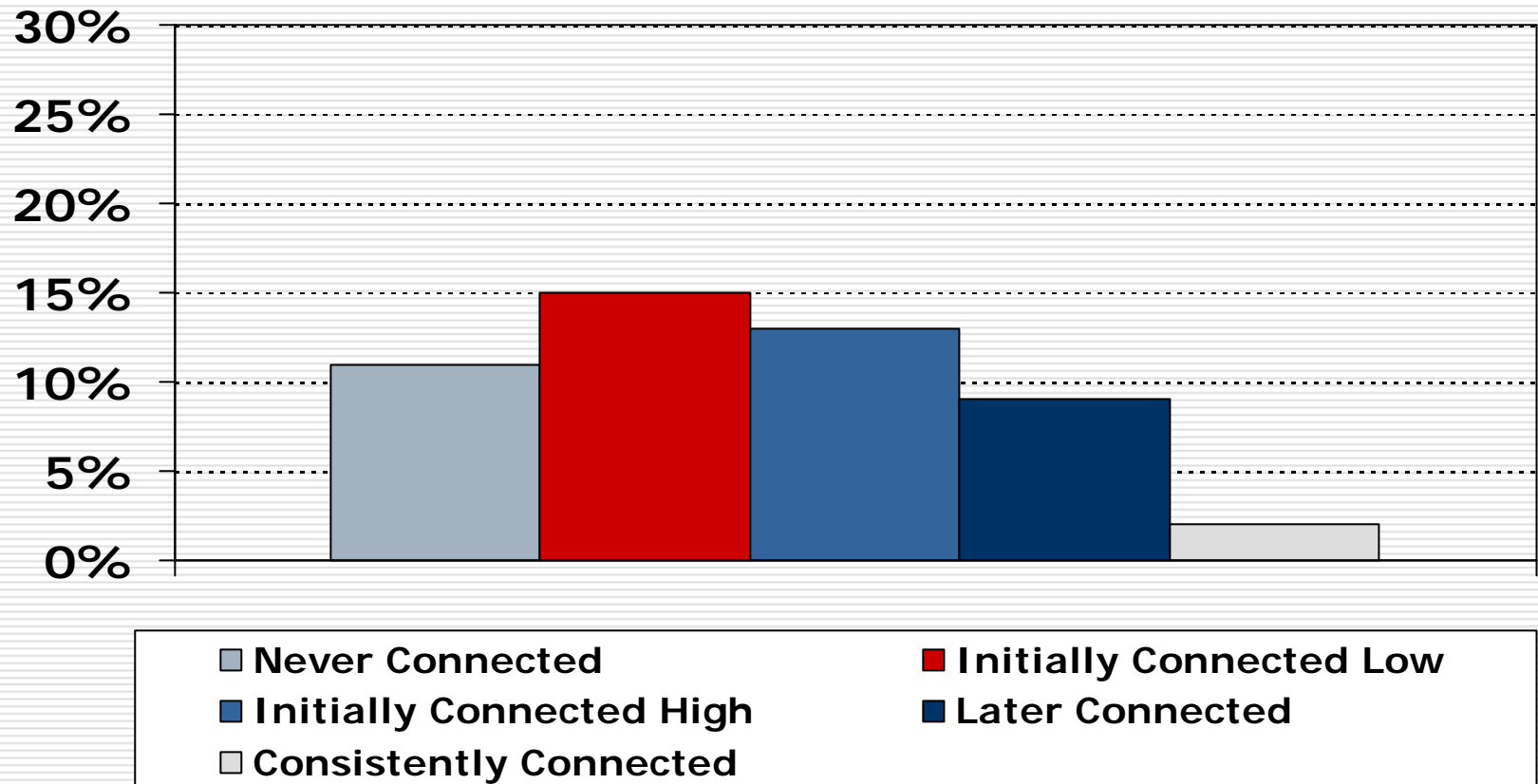
# Employment Trajectories and Arrests for Property Felonies

---



# Employment Trajectories and Arrests for Personal Felonies

---



# Employment Trajectories and Arrests for Felonies

---

- Consistently connected youth are less likely to be charged with a felony than youth in other trajectories
- About 35% of the youth from the initially connected-low trajectory were charged with a felony



# Employment Trajectories and Arrests for Felonies

---

- ❑ The profile of felony charges varied across trajectories
- ❑ About 30% of the youth from the initially connected-low trajectory were charged with a property felony
- ❑ Only 9% of the youth from the consistently connected trajectory were charged with a property felony



# Employment Trajectories and Arrests for Felonies

---

- 15% of the youth from the initially connected-low trajectory were charged with a personal felony
- Only 2% of the youth from the consistently connected trajectory were charged with a personal felony



# Ongoing Research

---

- We are currently examining the rate at which youth from each group subsequently use Work First, Food Stamps, and Medicaid
- We also are exploring the experiences of the foster care youth before entry into child welfare



# Ongoing Research

---

- ❑ Future analysis will group youth based on birth cohorts
- ❑ That analysis will explore outcomes for youth who exited foster care before age 16
- ❑ It is may be that those youth have more different outcomes

